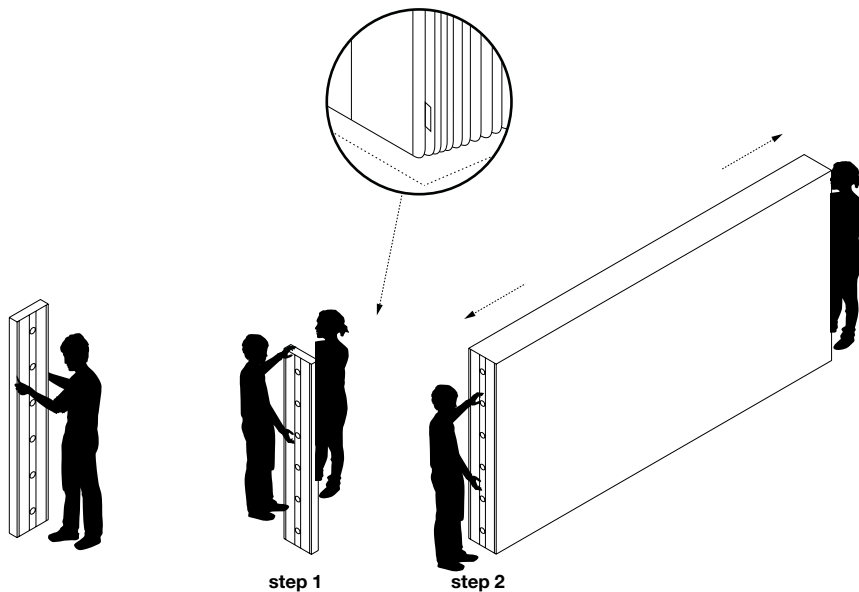


softwall · quickstart



set up

step 1: Ensure that floor is flat, clean and dry before setting up softwall. Stand softwall with rounded edge on bottom. With a person at each end of the softwall, take a firm hold on the circular hole handles.

step 2: Stretch softwall. Pull until you feel significant tension from the person on the other end. During the stretching process, softwall should extend to 30 feet (9 meters) to fully relax the honeycomb cells. Hold the stretch for a minute. When pulling softwall open, lift each end 1 inch (3 centimeters) off the floor to avoid dragging it into the ground.

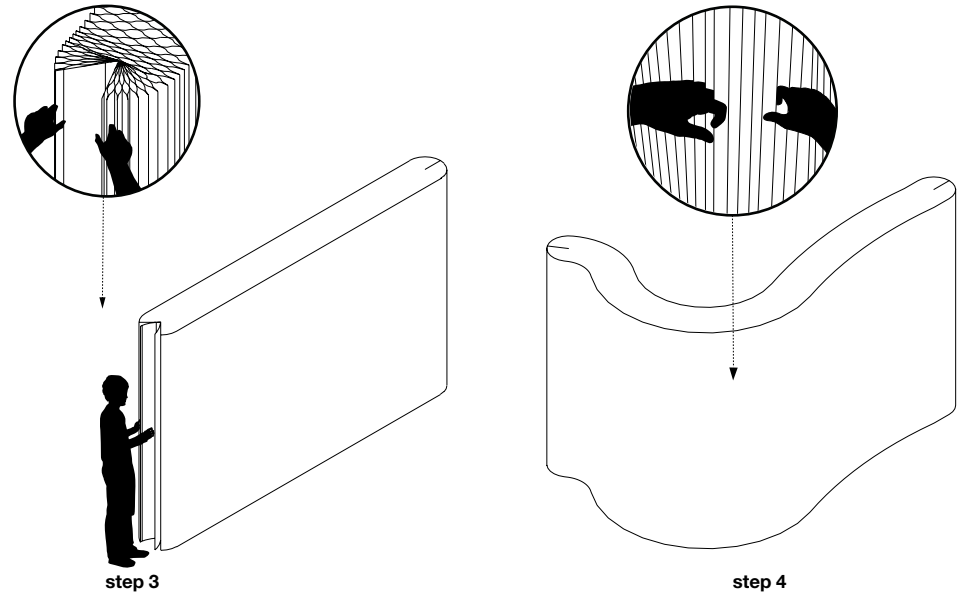
If softwall is not achieving the length you'd like (maximum recommended length of 15 feet (4.5 meters)), you may need to repeat the process. Paper softwall uses a stiffer material and requires extra stretching.

step 3: Fold each magnetic end panel vertically onto itself as shown in diagram above. This stabilizes softwall so that it is completely freestanding. You may also connect the magnetic end panels of one softwall to that of an adjacent softwall to create longer expanses, or connect it to other steel surfaces. Please ask molo about the steel strip accessory which can provide an anchor point for softwalls.

step 4: To rearrange the position / shape of the softwall, hold the fins between your knuckles, lift gently and pull into place. Pulling softwall is better than pushing into desired position, as pushing may crush and soften the fins on the bottom of the wall. You can arrange softwall into any position by holding the optional felt handle, or use the handle to open and close softwall like a door.

click [here](https://molodesign.com/app/uploads/2023/08/softwall-extended-use-guide.pdf) for softwall use guide (<https://molodesign.com/app/uploads/2023/08/softwall-extended-use-guide.pdf>)

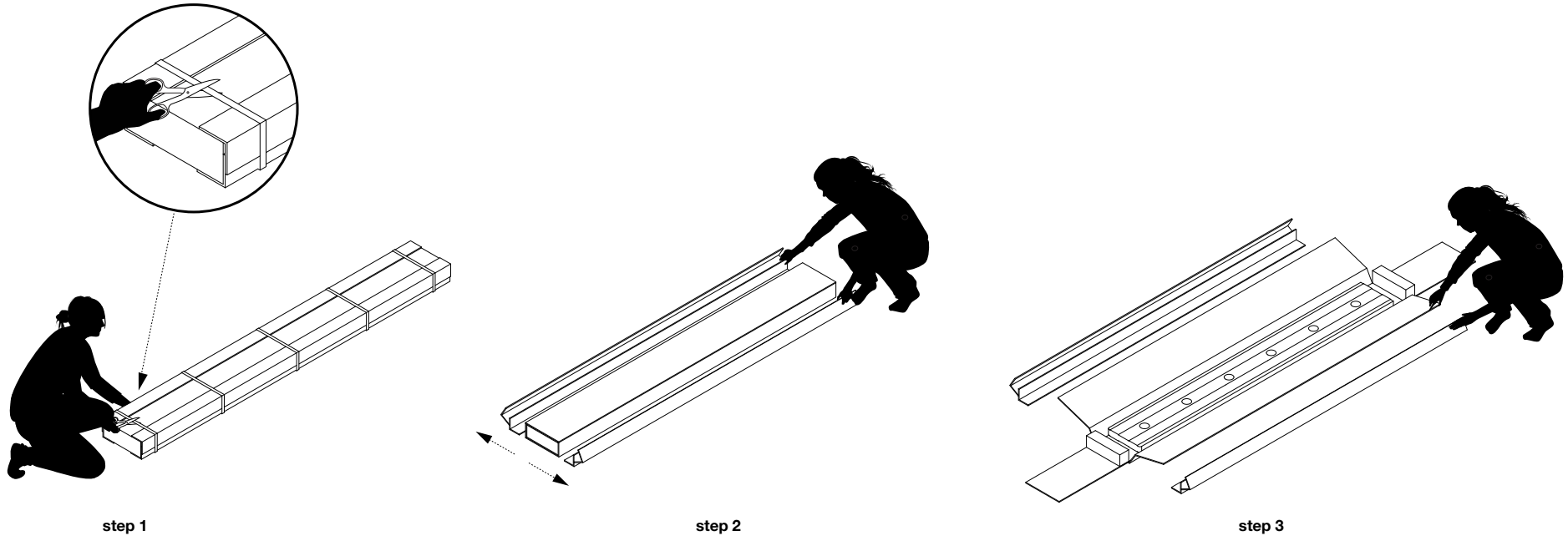
Designed by Stephanie Forsythe and Todd MacAllen, manufactured by molo and protected by one or more patents and/or design registrations held by molo, viewable at molodesign.com/ip



use + care

- textile softwall + softblock are water, tear and UV resistant (will not discolour in sunlight).
- paper softwall + softblock are not suitable for wet or humid environments.
- When cleaning floors, store softwall on molo's optional stainless steel wall hook to avoid damaging / dirtying the base. For safe and easy retrieval, hang 6' and 8' softwalls by the sixth hole from the bottom. Closing the magnetic end panels around the hook to form a half column will offer the softwall further stability during storage.
- Baby wipes work well for cleaning textile softwall + softblock (or any nonabrasive cloth + water). If there is a stubborn stain on textile softwall try "Mr. Clean magic eraser". Use with care as they can abrade the textile.
- textile softwall + softblock are made from an antistatic material which does not attract dust. Compressing and then expanding softwall + softblock will push air through the cells, blowing out dust that has collected inside.
- softwall + softblock will benefit from periodically being closed and left in a compressed state for a few days in order to regain shape memory.
- Clean optional wool felt handles with a lint brush or damp cloth.
- It is possible to repair small tears in softwall, ask for details.
- softwall + softblock are intended to have a long, useful life. Nevertheless, they are made with material that is 100% recyclable (just remove magnetic end panels). The paper used for brown and blue softwall + softblock is made from wood harvested from FSC® Certified (FSC® C158591) responsible sources. textile softwall + softblock is 100% polyethylene and is ♻️ in the recycling stream.

opening softwall + softblock box



softwall + softblock packaging is designed for ease of reuse and is fully recyclable. We recommend you keep the original packaging if you plan on storing softwall + softblock for extended periods of time or are transporting walls between installations. To repackage softwall, follow directions in reverse and secure with strapping, stretch wrap, or our reusable velcro strap accessory.

step 1: Cut plastic strapping (do NOT cut cardboard).

step 2: Unfold and remove U-channels.

step 3: Unfold box.