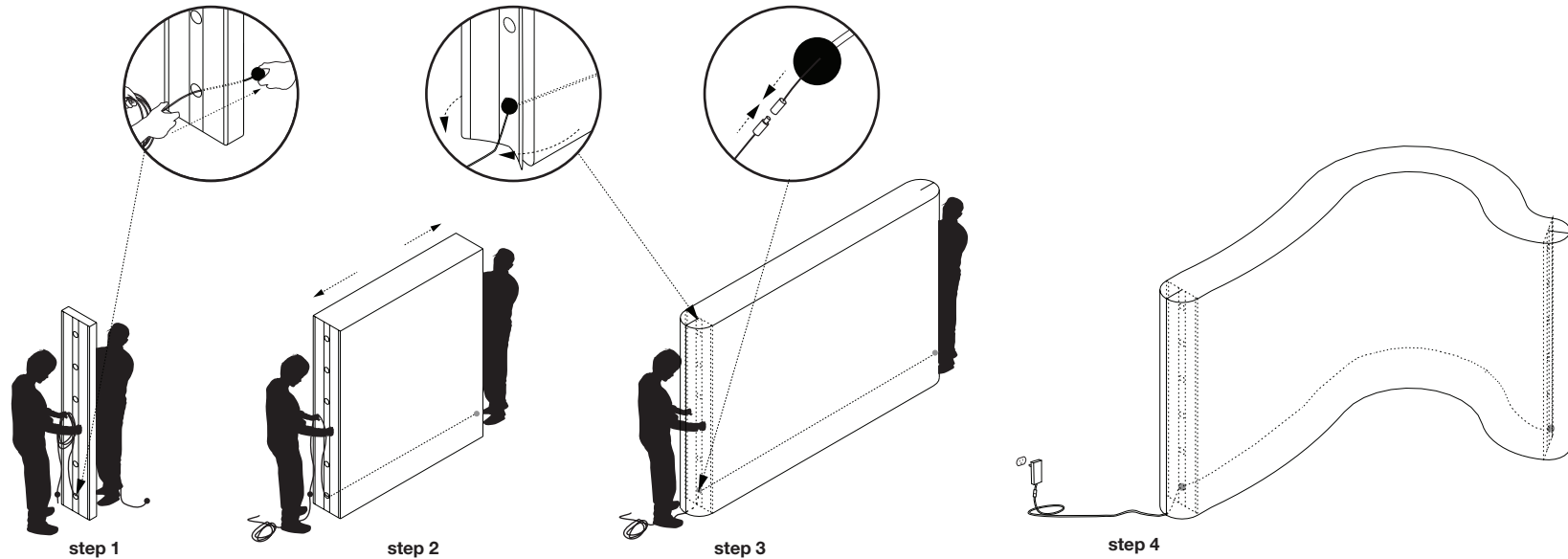


# LED kit for softwall + softblock · use guide



## set up

**step 1:** Stretch softwall (without LED) by following instructions on “softwall + softblock · use guide”. Recompress softwall, and pass foam ball attached to LED ribbon through desired circular hole tunnel.

**step 2:** Pull softwall open while feeding LED ribbon through the tunnel. Pull until the foam balls cork the holes on either end of the tunnel.

**step 3:** Push foam ball fully inside of holes and then close end panels. Connect electrical components as shown in diagram of step 4 above.

**step 4:** Feed power wire or coupler downward inside the closed end panel to reach the floor. The 3m (10') power wire can be used between the transformer and LED ribbon for flexible placement within a room. 2-way LED kits connect multiple LED ribbons to a single transformer. See following page for recommended LED positions.

## parts for multiple LEDs

coupler	connects multiple LED ribbon power wires to single transformer
transformer	plugs into wall outlet. A 40W transformer can only be used with a singular LED ribbon. Use a 60W transformer for 2 LED strips
15' extension cord (optional)	used between the power wire and coupler to extend length of power wire up to 35' (10.5m), or run through holes in softwall to power multiple LEDs from a single plug

## use + care

- LED and electrical components are for indoor use only.
- Refer to “softwall + softblock · use guide” for further use + care.



# recommended positions of LEDs

