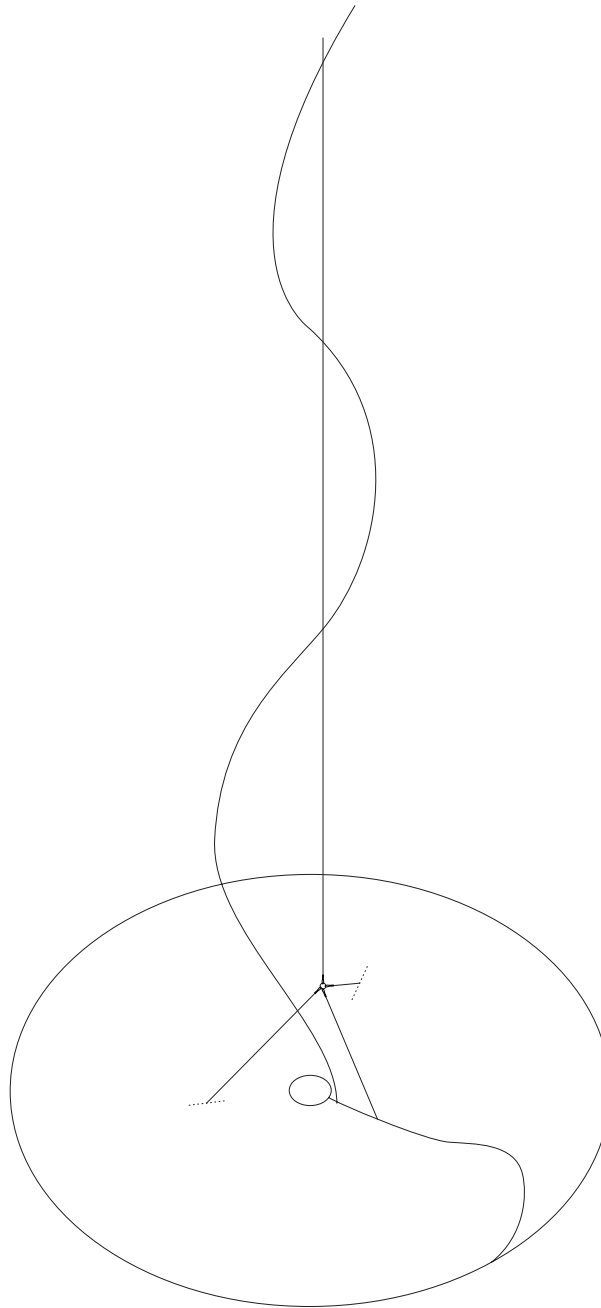
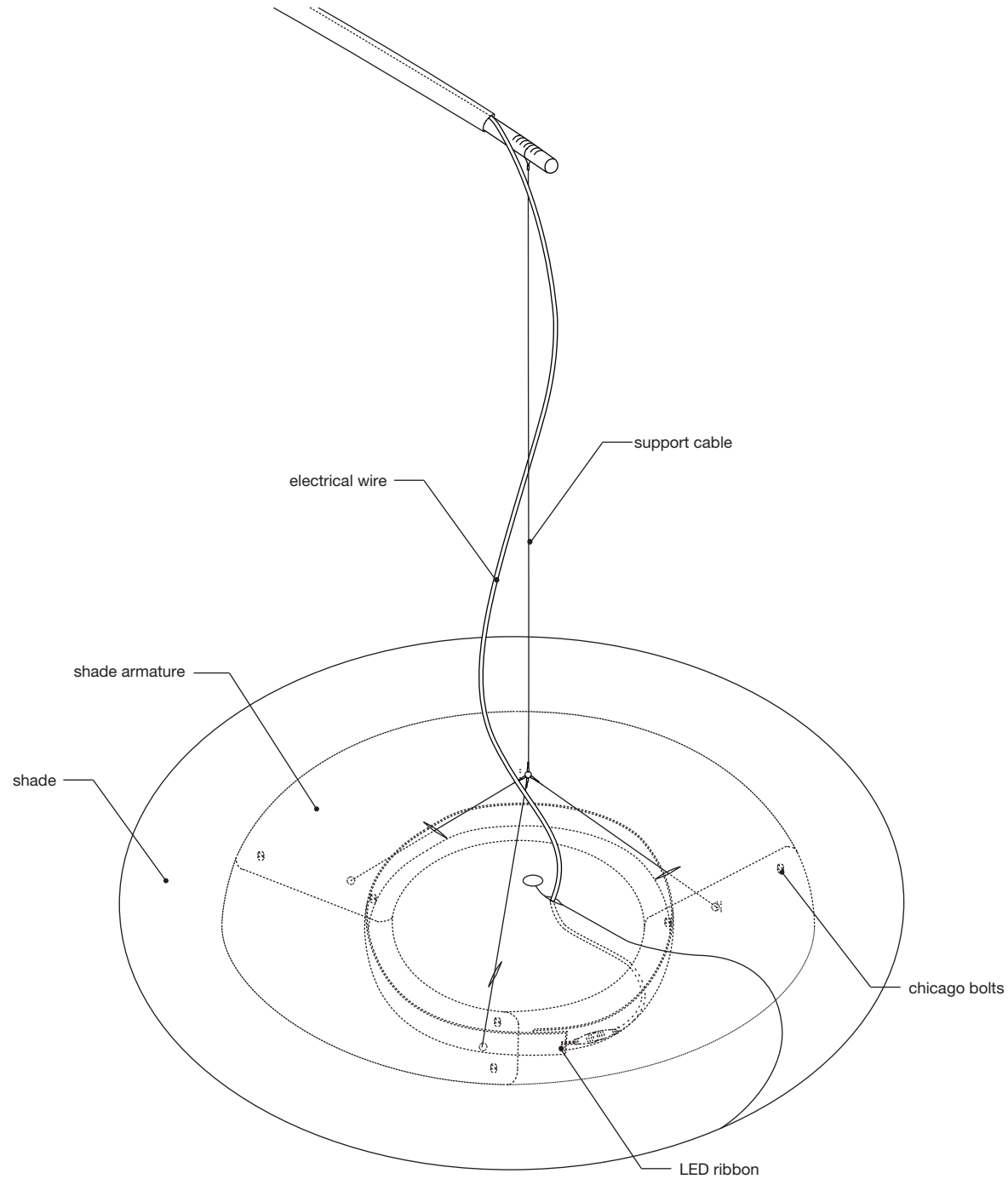


# cloud softlight pendant (220 - 240V) · installation guide

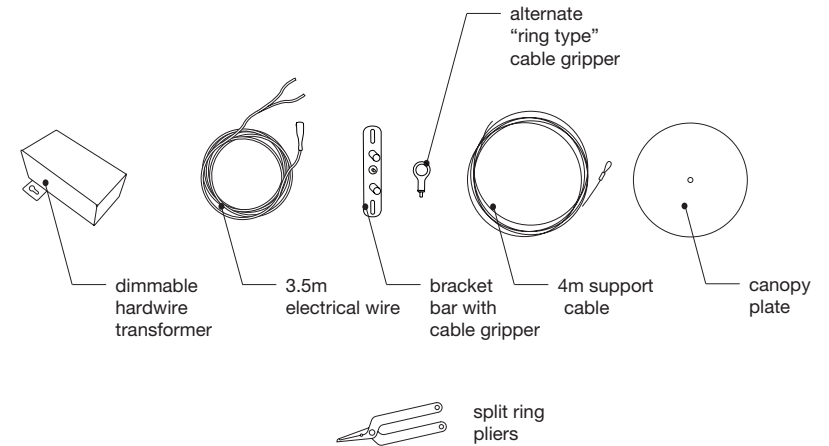
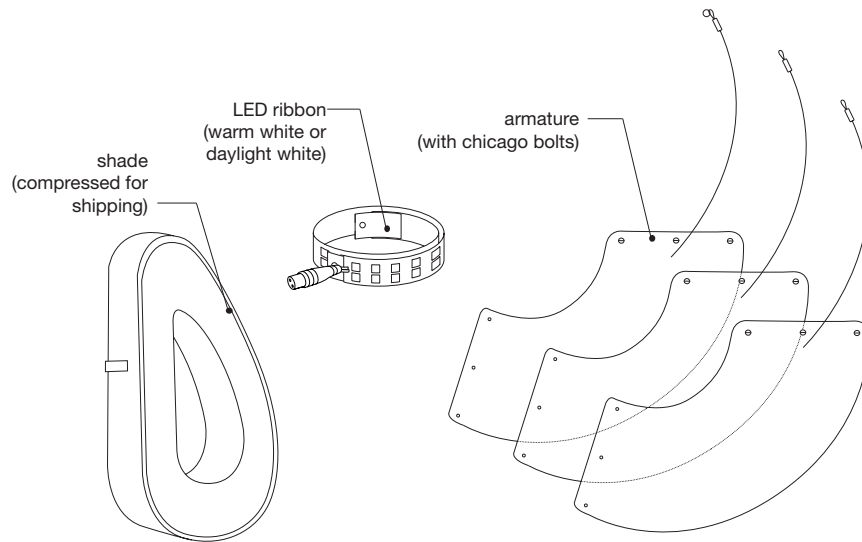


molo

# cloud pendant anatomy



# cloud pendant parts



- **dimnable hardwire transformer:** Dimensions and watts vary with cloud size, as shown on right. 120V and 240V options available. Mount transformer behind electrical junction box in ceiling or other accessible location. Specifications can be found inside the transformer box. Dimmable with standard magnetic low-voltage (MLV) dimmers.

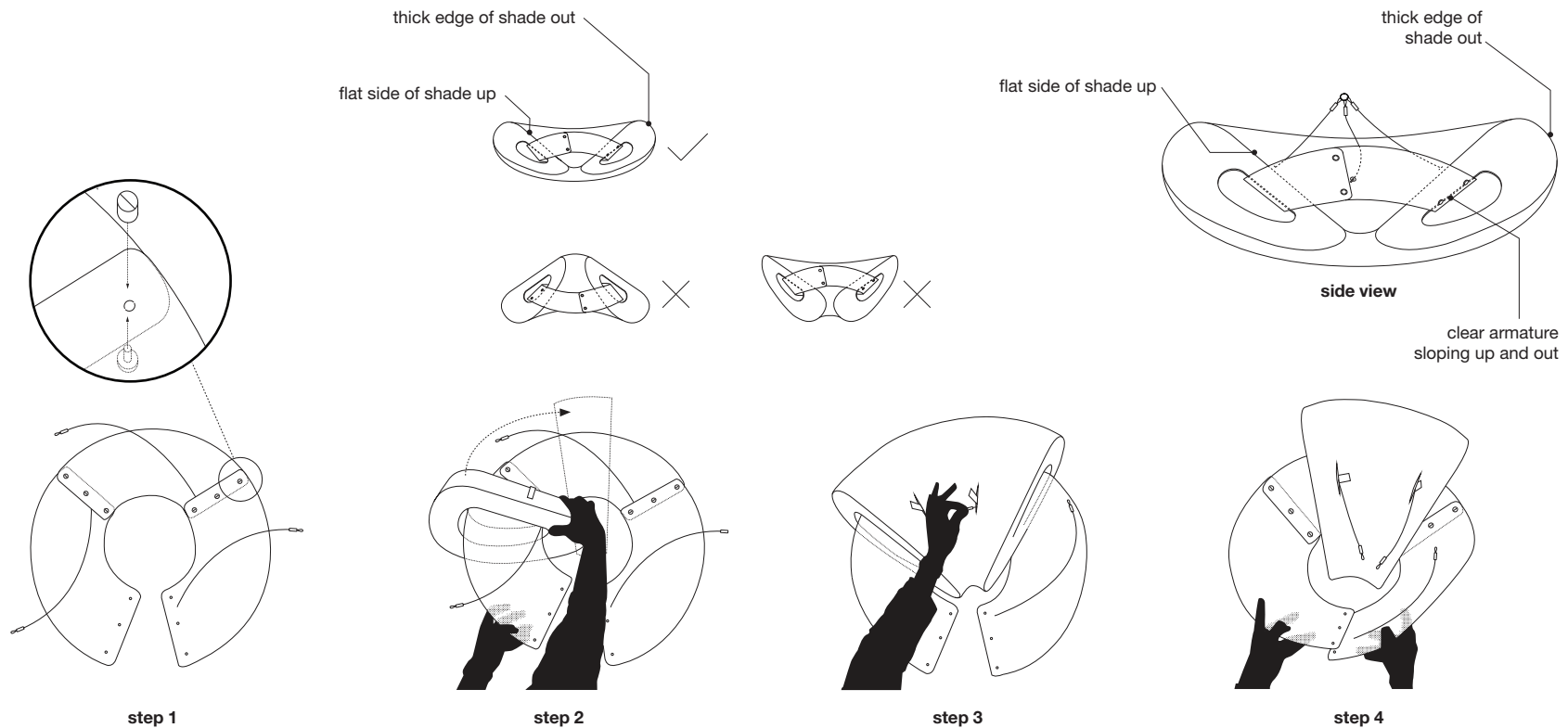
- **small cloud pendant:**  
20W transformer 152mm x 76mm x 38mm (6" x 21/8" x 11/2")

- **medium cloud pendant:**  
35W transformer 152mm x 76mm x 38mm (6" x 21/8" x 11/2")

- **large cloud pendant:**  
75W transformer 176mm x 86mm x 86mm (7" x 33/8" x 33/8")

- **x-large cloud pendant:**  
75W transformer 176mm x 86mm x 86mm (7" x 33/8" x 33/8")

# cloud pendant assembly



**step 1:** To assemble the cloud armature, peel off protective paper and lay all three clear plastic pieces on a flat surface. Check that the crimped loop-end of each steel support cable is on the top side. Hand-turn the chicago bolts to unscrew, and then line up holes of armature as shown above. Ensure that the side with attached support cable is underneath the piece to be connected. Screw pieces together to create a "C" shaped collar. Do not close the collar.

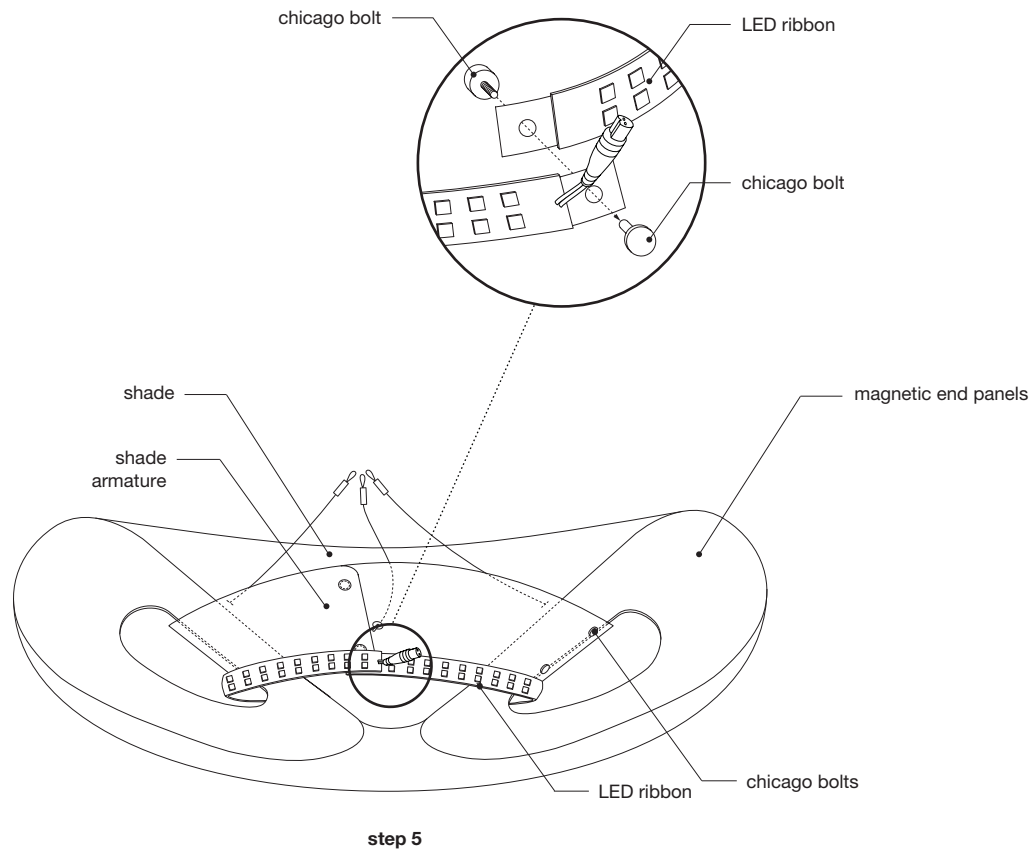
**step 2:** Feed armature through shade cavity. Flat side of shade should face up with thick edge of shade at outer perimeter.

**IMPORTANT:** If this step is not done correctly you will end up with a "droopy" looking cloud. Be sure the clear plastic armature forms a truncated cone shape with the larger diameter facing up and the center of the cone pointing down as shown in the drawing above on right side of page. Also note the orientation of cloud shade shape shown above, with flat side on top and smaller pointed end toward the center.

**step 3:** Feed two support cables through the larger cells of the shade. The larger cells are marked with coloured tags.

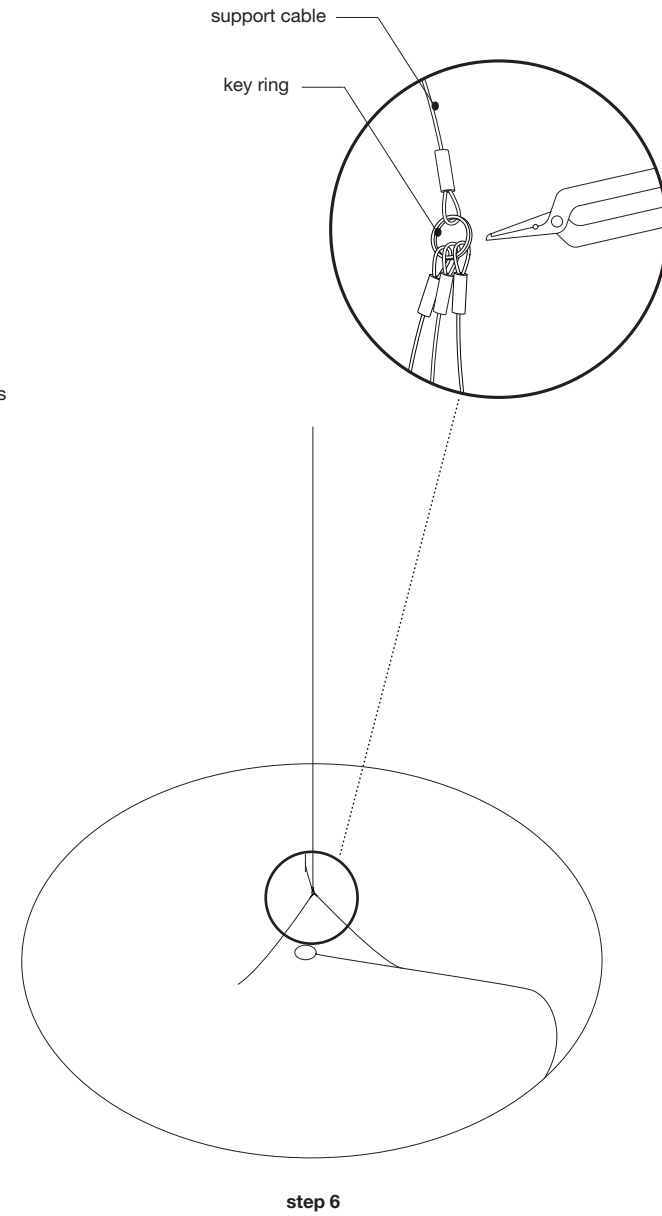
**step 4:** Line up the holes of the last set of connection points in plastic armature. Start with the holes closest to the center, screw together. By lifting the outside perimeter of armature you will create a truncated cone that slopes down to the center. Screw in the last chicago bolts.

# cloud pendant assembly

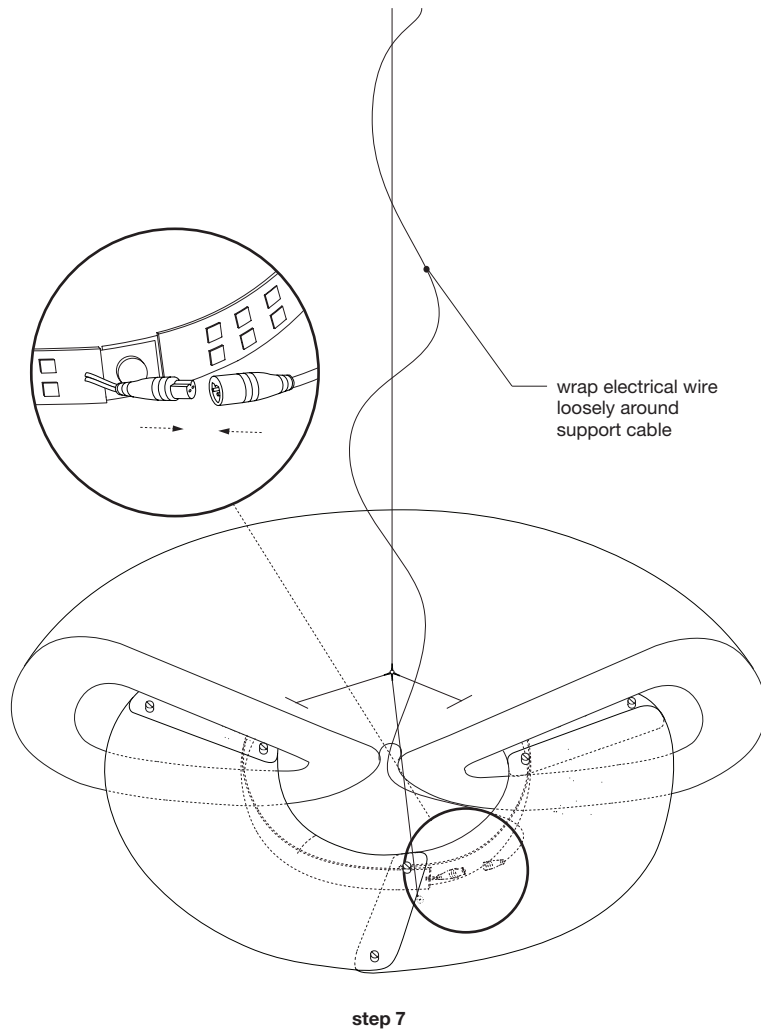


**step 5:** Feed LED ribbon through textile shade cavity, making sure LED is under clear plastic armature. Connect the ends of the LED strip together to form a ring, ensuring the LED chips face outwards then fasten with aluminum chicao bolt provided.

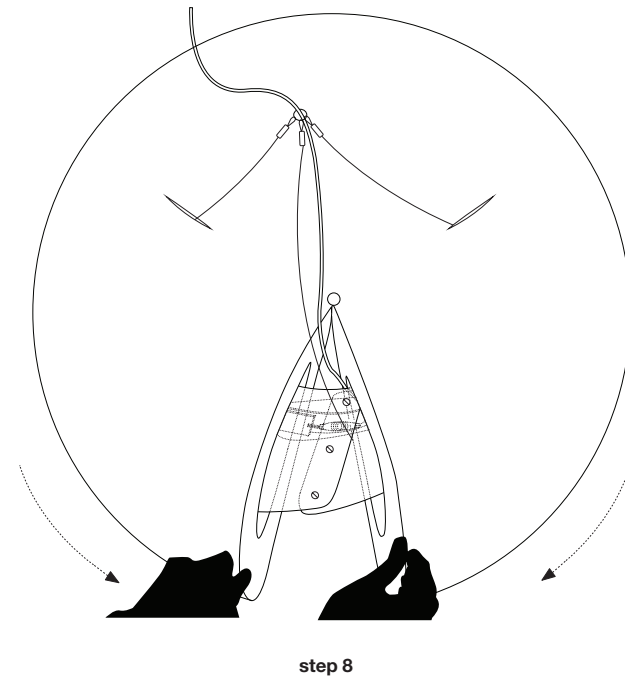
**step 6:** Use split ring pliers to open the keyring attached to main support cable and attach the three support cables from cloud pendant. Remove coloured tabs on the pendant shade.



# cloud pendant assembly



**step 7:** Connect electrical wire to LED (be sure to line up matching groove in male and female ends of connectors).



**step 8:** Close the shade around the armature by holding inside the shade cavity and pulling the magnetic end panels around, connecting to each other. The magnets hold the end panels together. The third steel support cable and electrical wire sandwich between the two magnetic end panels.

# cloud pendant installation

## troubleshooting

transformer and cloud electrical wires have negative polarities, if cloud is not illuminating, check that polarities are properly matched

