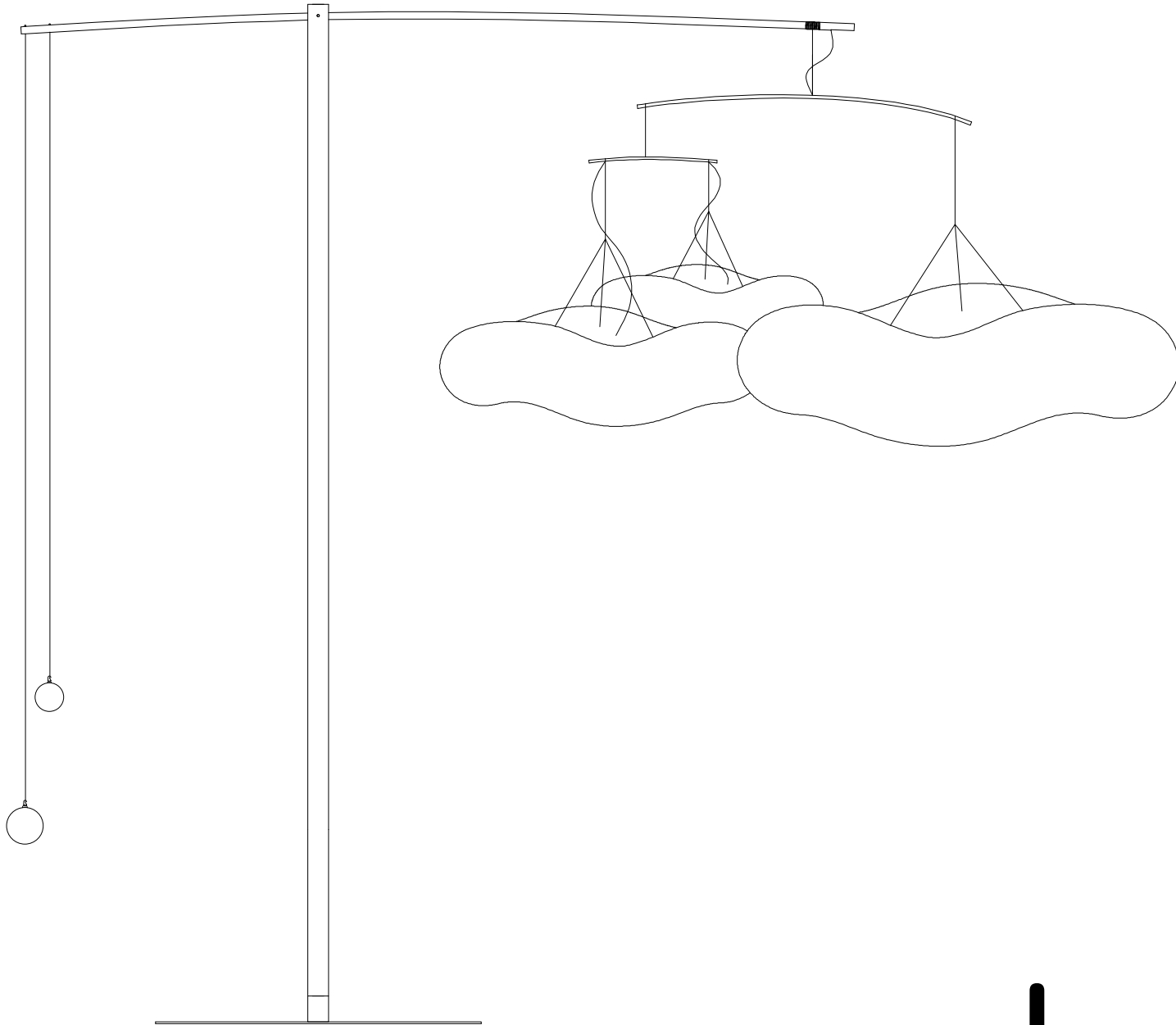
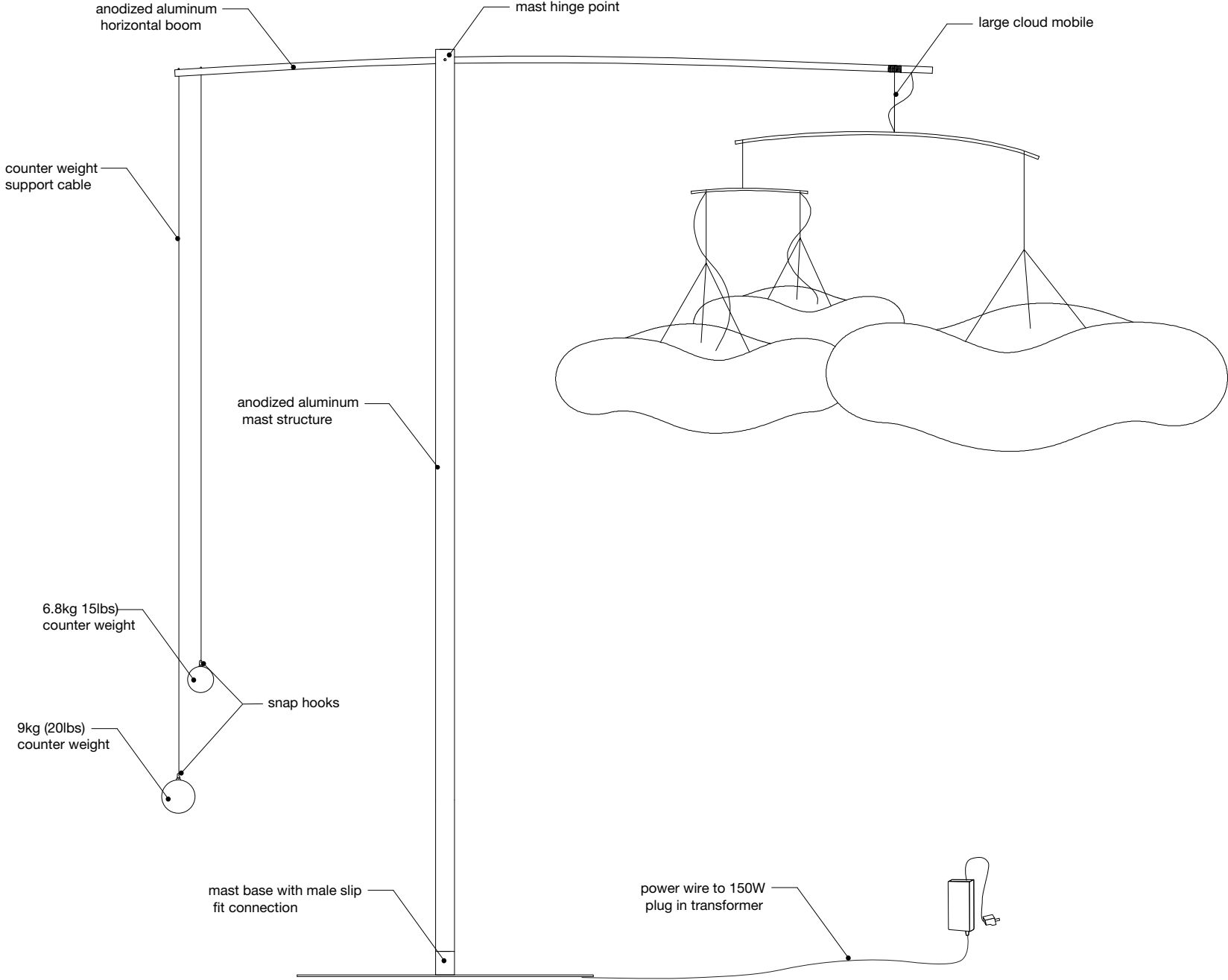


large cloud mast · installation guide

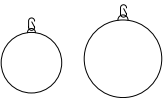
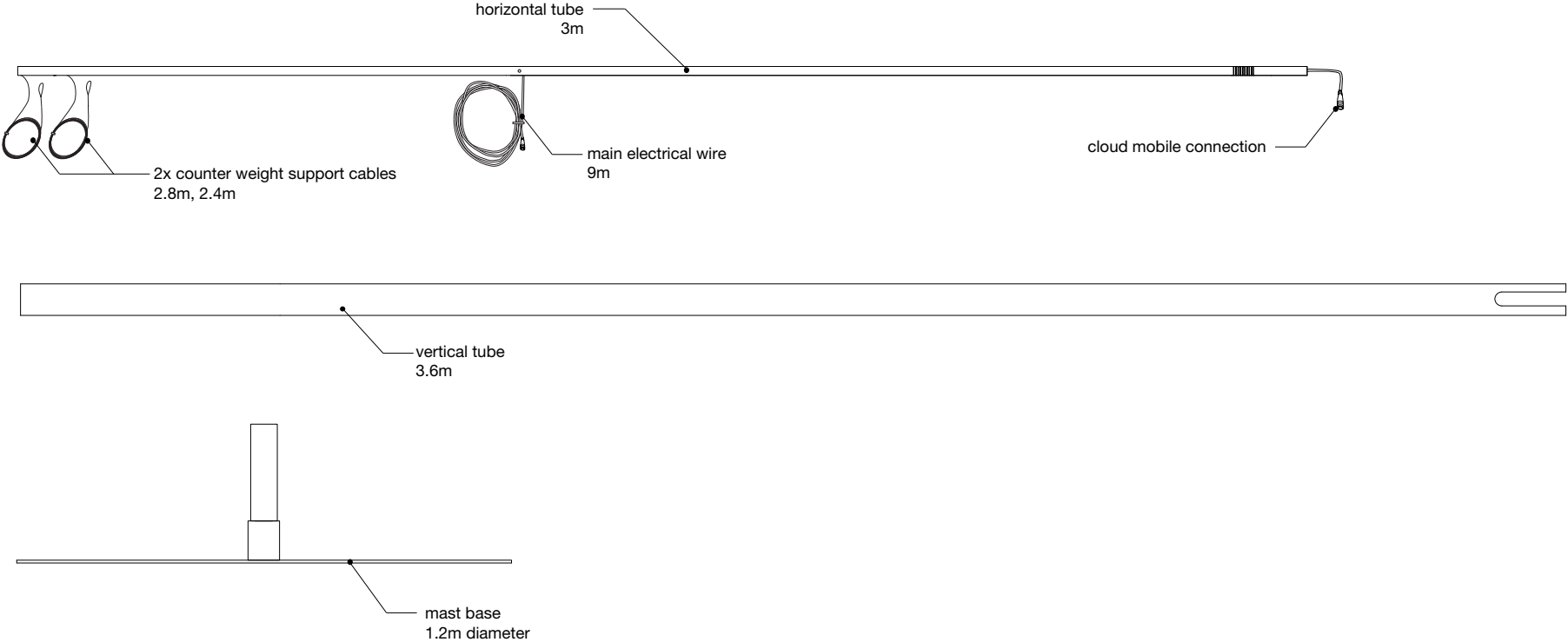


molo

large cloud mast anatomy



large cloud mast parts



1x 9kg (20lbs) counter weight with snap hook
1x 6.8kg (15lbs) counter weight with snap hook

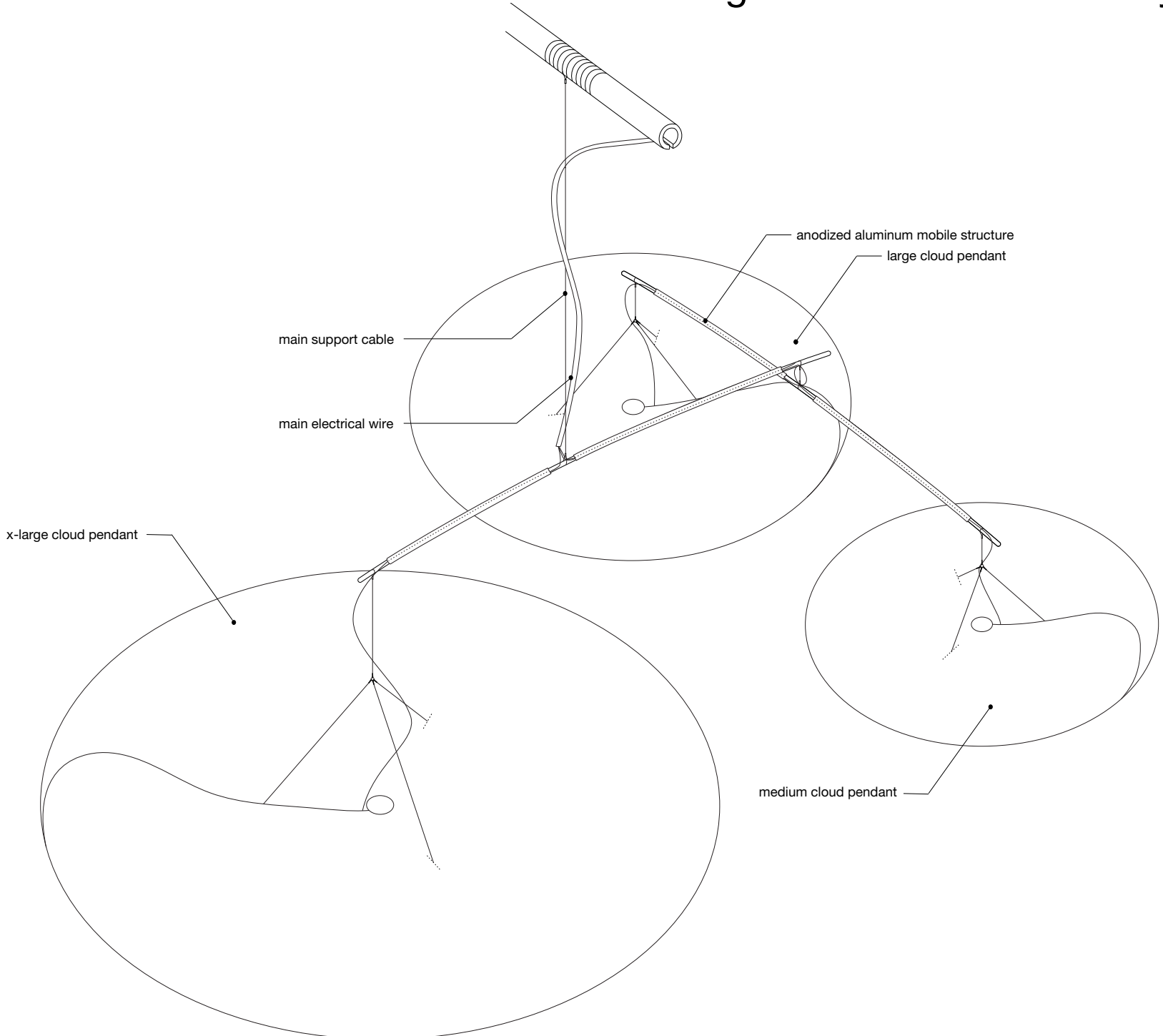


mast hinge pin with nylon sieve

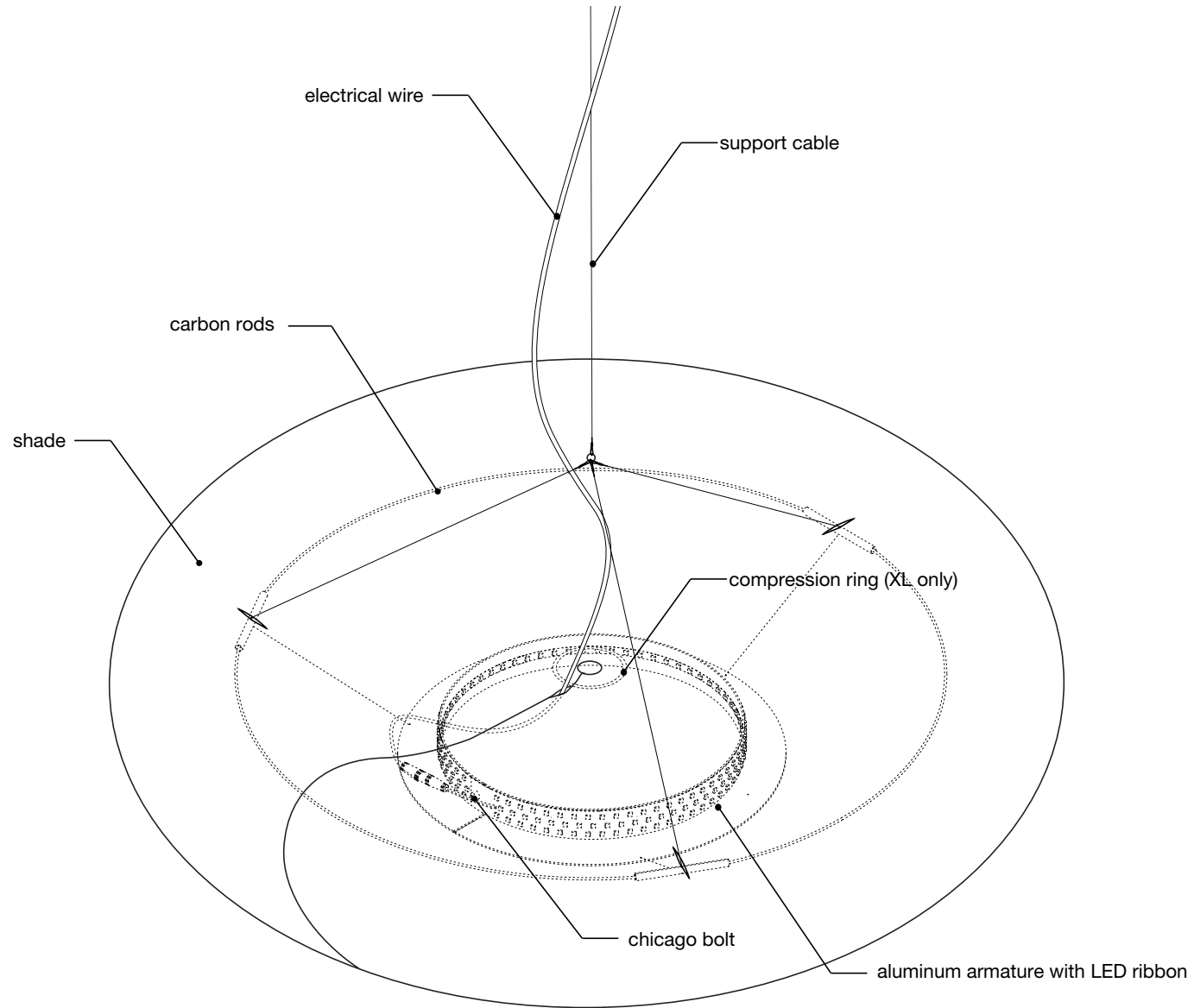


2x knurled thumb nuts

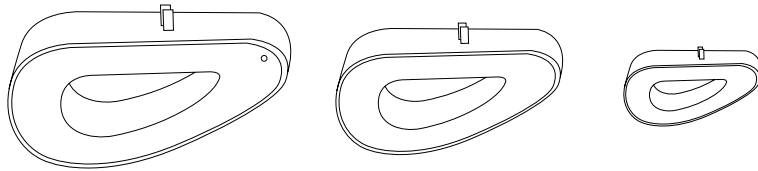
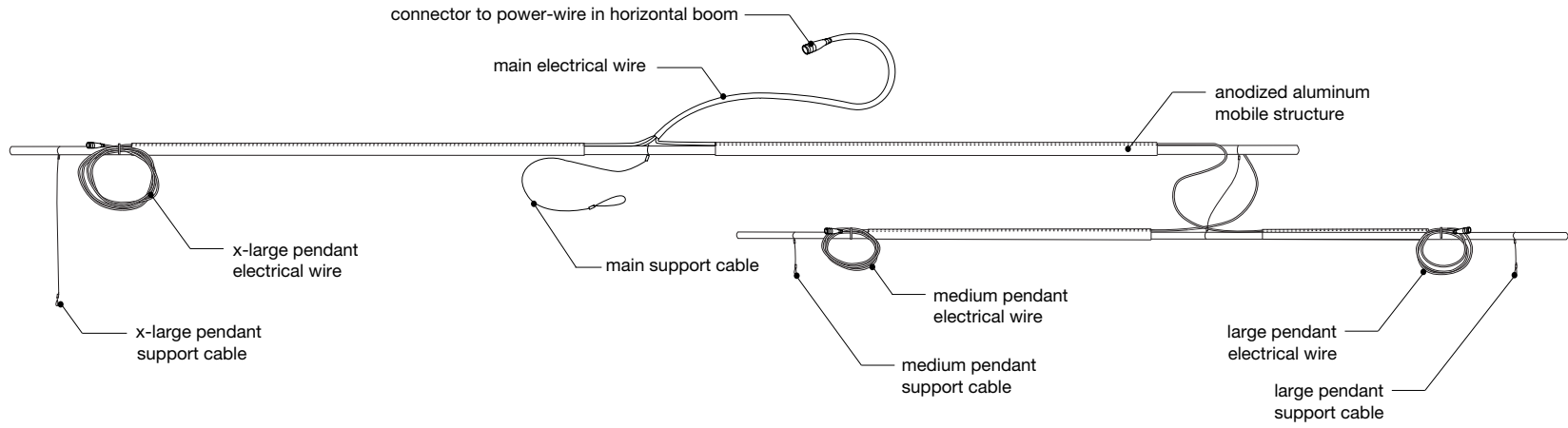
large cloud mobile anatomy



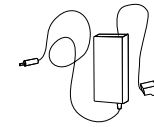
anatomy of cloud pendant within mobile



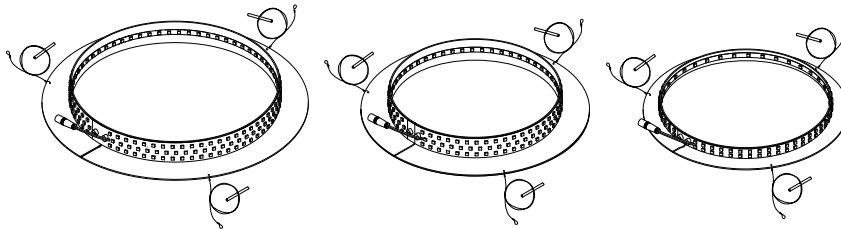
large cloud mobile parts



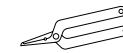
cloud shade
md, lg, xl
(compressed for shipping)



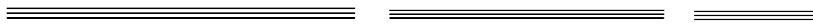
plug-in transformer



shade armatures
+ LEDs
md, lg, xl

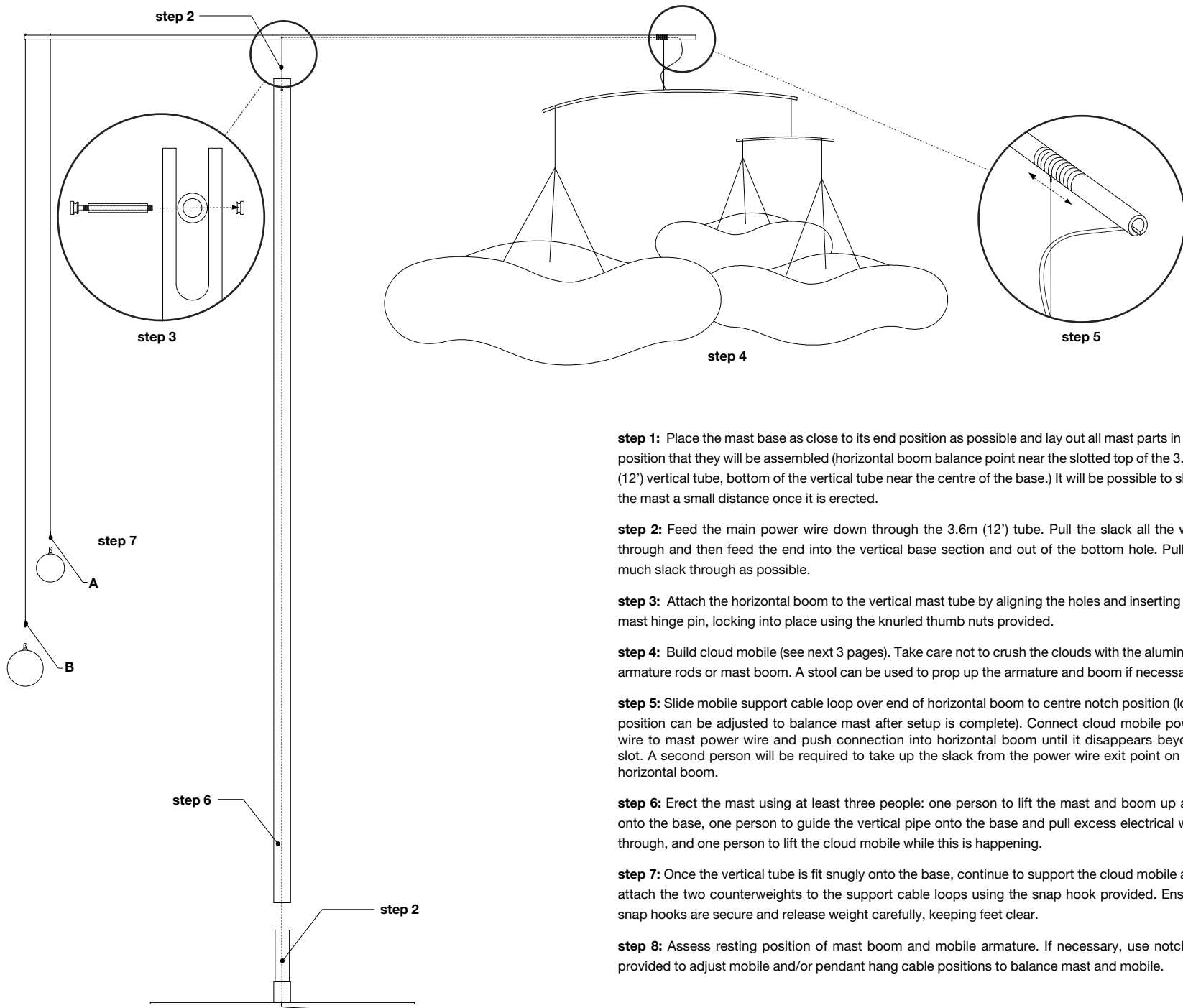


split ring pliers



sets of 3 carbon
rods
md, lg, xl

large cloud mast assembly



step 1: Place the mast base as close to its end position as possible and lay out all mast parts in the position that they will be assembled (horizontal boom balance point near the slotted top of the 3.6m (12') vertical tube, bottom of the vertical tube near the centre of the base.) It will be possible to slide the mast a small distance once it is erected.

step 2: Feed the main power wire down through the 3.6m (12') tube. Pull the slack all the way through and then feed the end into the vertical base section and out of the bottom hole. Pull as much slack through as possible.

step 3: Attach the horizontal boom to the vertical mast tube by aligning the holes and inserting the mast hinge pin, locking into place using the knurled thumb nuts provided.

step 4: Build cloud mobile (see next 3 pages). Take care not to crush the clouds with the aluminum armature rods or mast boom. A stool can be used to prop up the armature and boom if necessary.

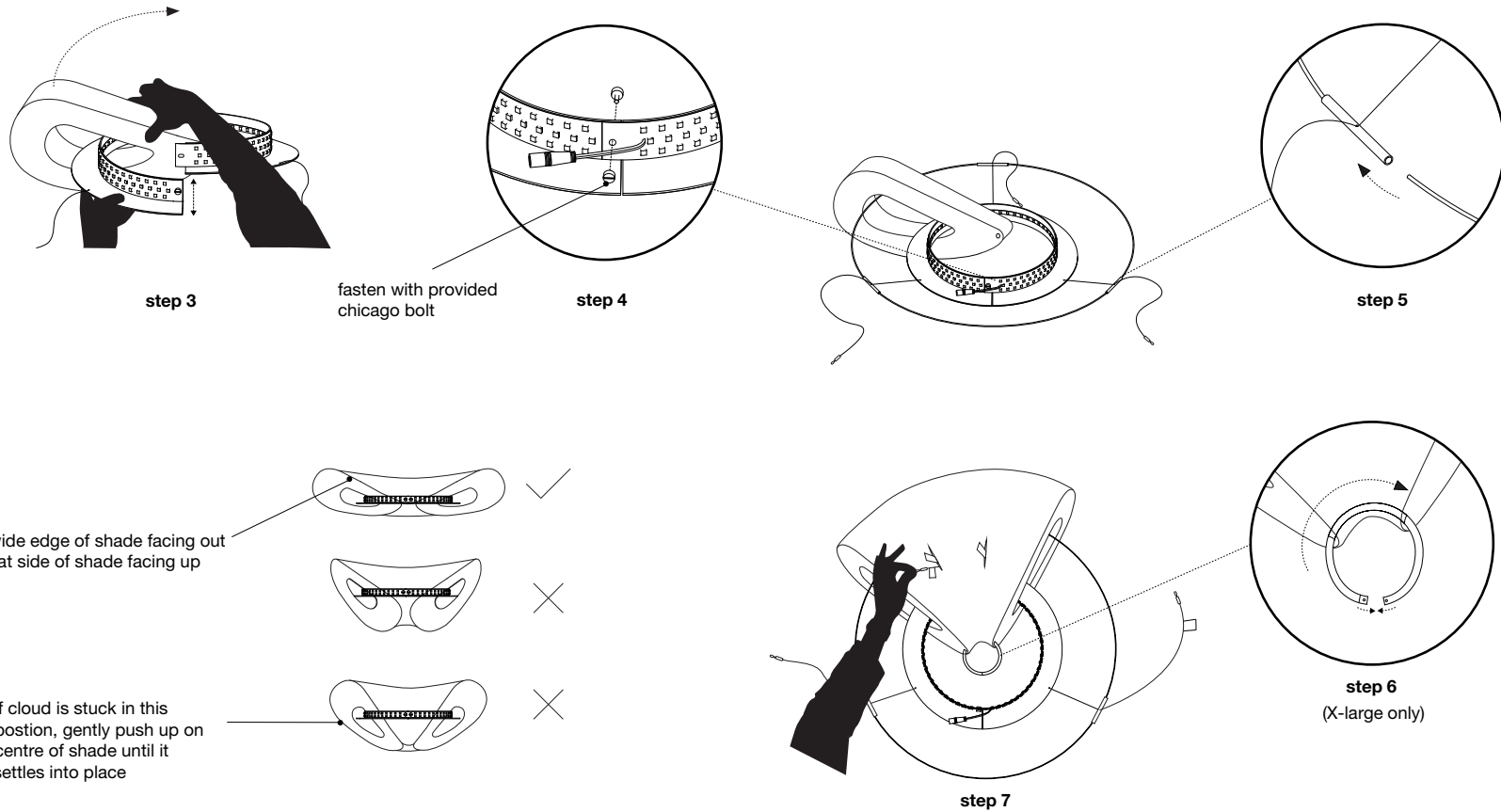
step 5: Slide mobile support cable loop over end of horizontal boom to centre notch position (loop position can be adjusted to balance mast after setup is complete). Connect cloud mobile power wire to mast power wire and push connection into horizontal boom until it disappears beyond slot. A second person will be required to take up the slack from the power wire exit point on the horizontal boom.

step 6: Erect the mast using at least three people: one person to lift the mast and boom up and onto the base, one person to guide the vertical pipe onto the base and pull excess electrical wire through, and one person to lift the cloud mobile while this is happening.

step 7: Once the vertical tube is fit snugly onto the base, continue to support the cloud mobile and attach the two counterweights to the support cable loops using the snap hook provided. Ensure snap hooks are secure and release weight carefully, keeping feet clear.

step 8: Assess resting position of mast boom and mobile armature. If necessary, use notches provided to adjust mobile and/or pendant hang cable positions to balance mast and mobile.

cloud pendant assembly



step 1: Review [x-large cloud pendant instructional video](http://www.molodesign.com/instructional-video-cloud-pendant-xlarge) (www.molodesign.com/instructional-video-cloud-pendant-xlarge)

step 2: Stretch cloud shade carefully, as shown in video linked above.

step 3: Undo the chicago bolt and split the angle ring LED armature by pulling the open ends of the ring apart vertically. Thread the armature through the cloud shade with the horizontal flange facing down. Make sure the flat side of the shade is facing up and the wider end of the shade is facing outwards.

IMPORTANT: If this step is not done correctly the cloud will look “droopy” when installed. The cloud should sit relatively flat and undulate gently when installed correctly.

step 4: Close armature ring and fasten through hole in LED ribbon and aluminium ring using provided chicago bolt.

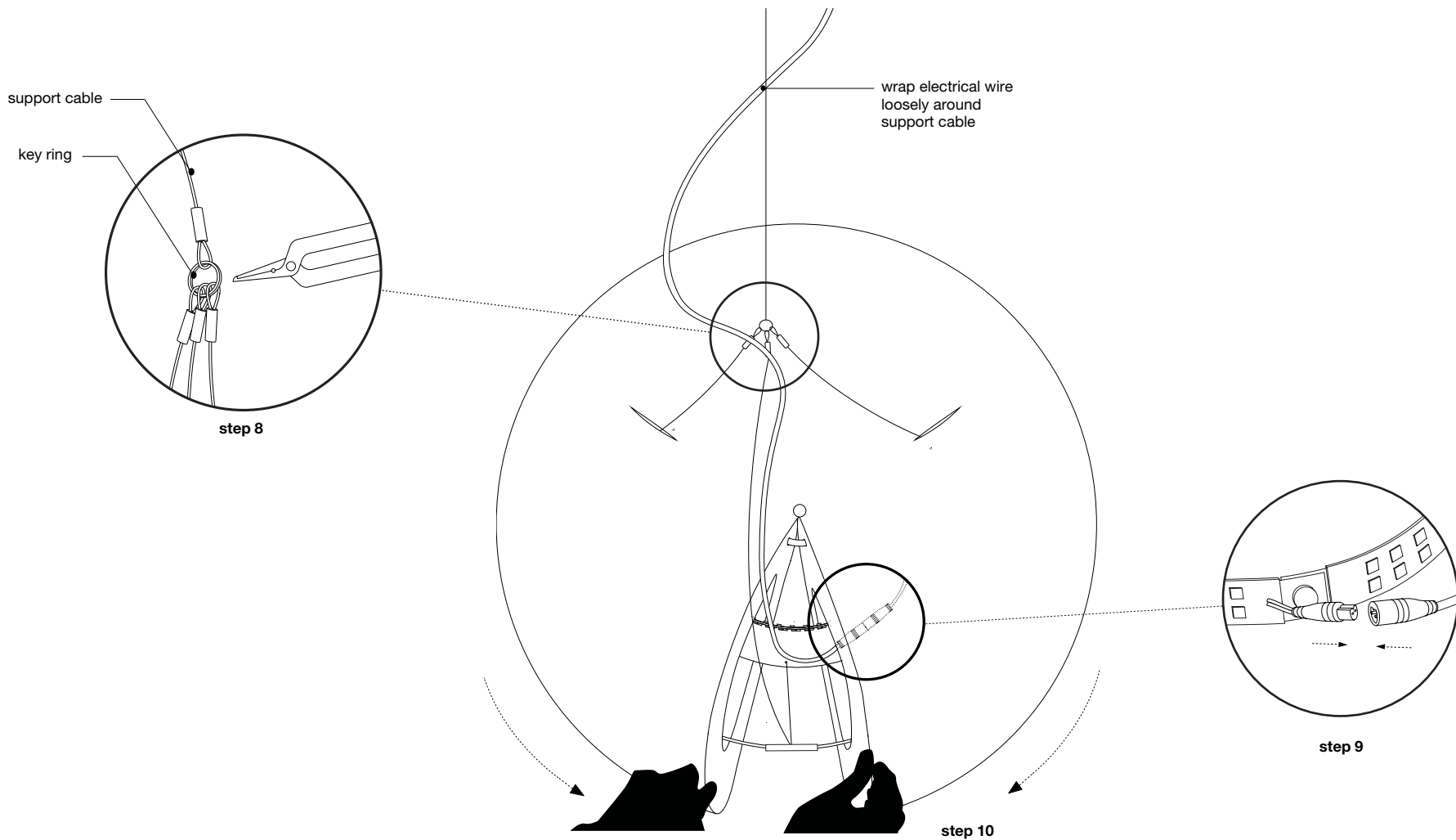
step 5: Complete the outer ring of the armature by inserting the white painted carbon rods into the aluminum tube connectors (fixed to cables). The rods will flex to create a circle inside the cavity of the shade.

step 6: Spread open cloud shade slightly and thread clear compression ring through hole in narrow end of shade (X-large only). Snap closed.

IMPORTANT: Do not attempt to compress the shade once the compression ring is installed. Doing so will damage the shade.

step 7: Feed two of the three support cables through the larger cells of the shade. Make sure the red tagged wire passes through the red tagged cell and the blue tagged wire passes through the blue tagged cell. **Remove tags.**

cloud pendant assembly

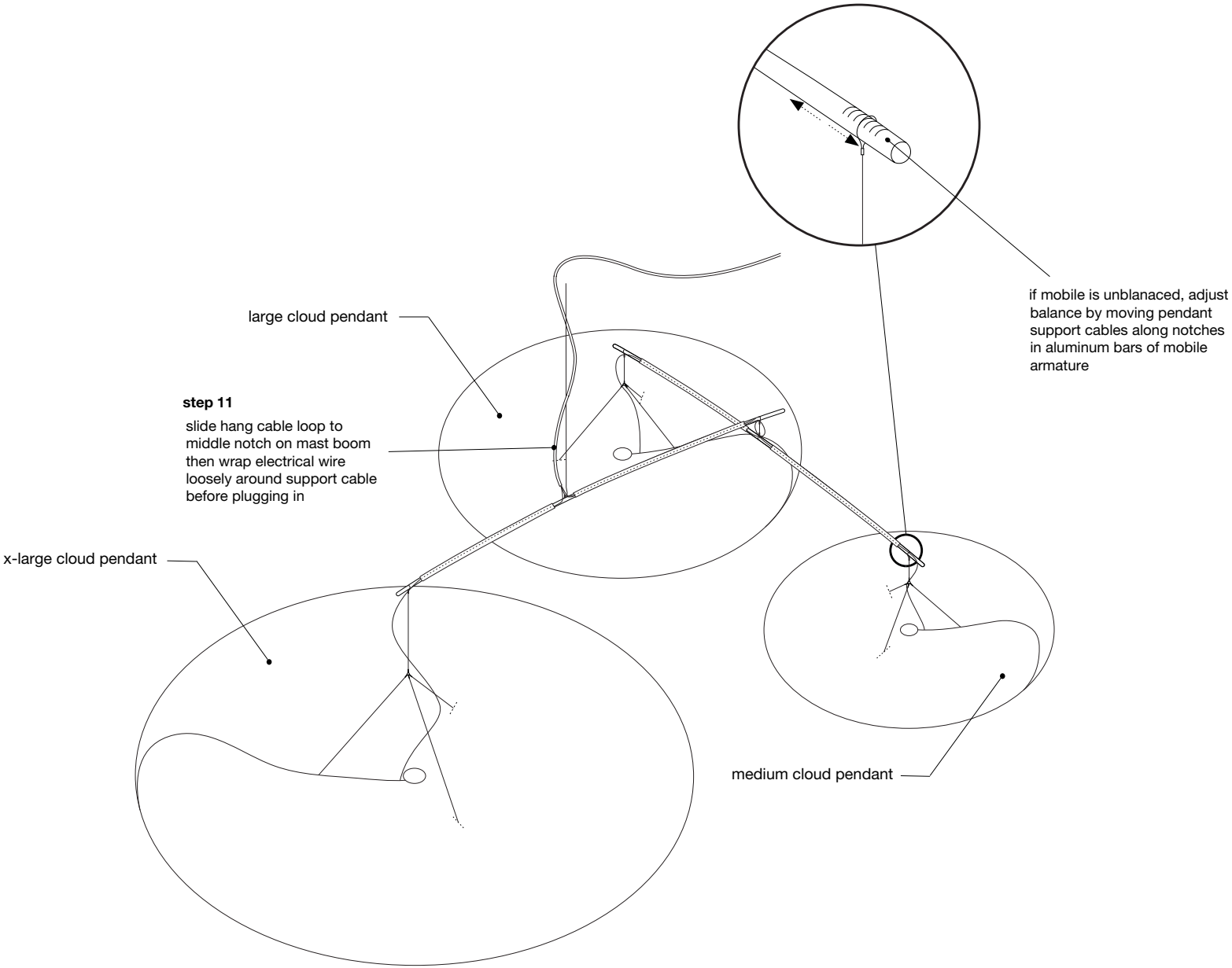


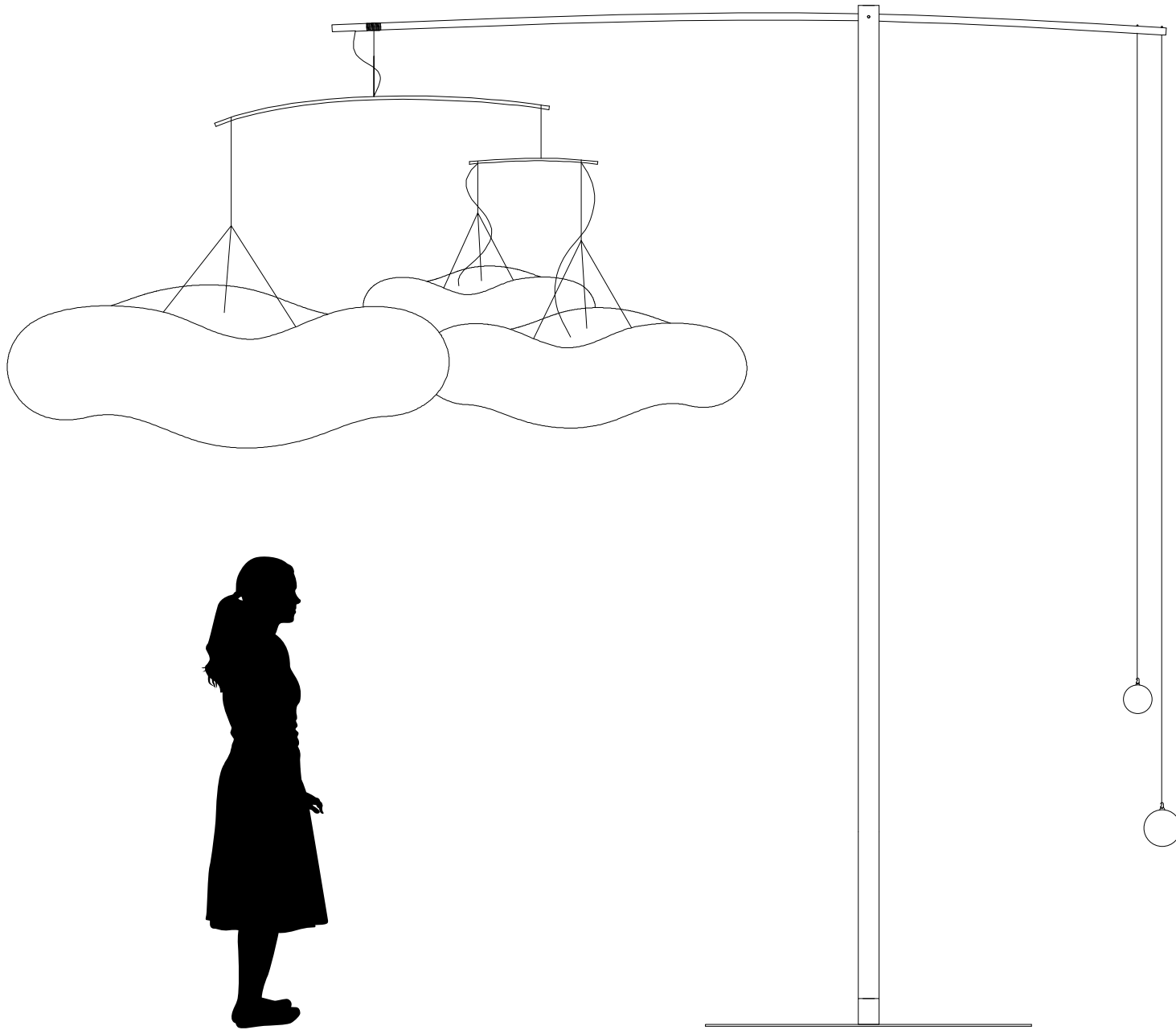
step 8: Use split ring pliers to open the key ring attached to main support cable and attach the three support cables from cloud pendant.

step 9: Wrap electrical wire loosely around support cable and then connect it to LED ribbon inside shade (be sure to line up matching groove in male and female ends of clear connectors).

step 10: Close the shade around the armature by grabbing 20+ layers of the outer fins and pulling the magnetic end panels around the ring until they connect together. The third steel support cable and electrical wire should be sandwiched between the two closed magnetic end panels.

large cloud mobile assembly





stiftung ear

