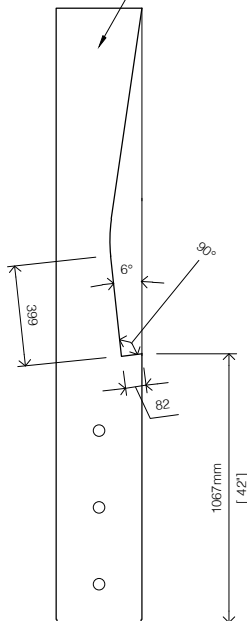
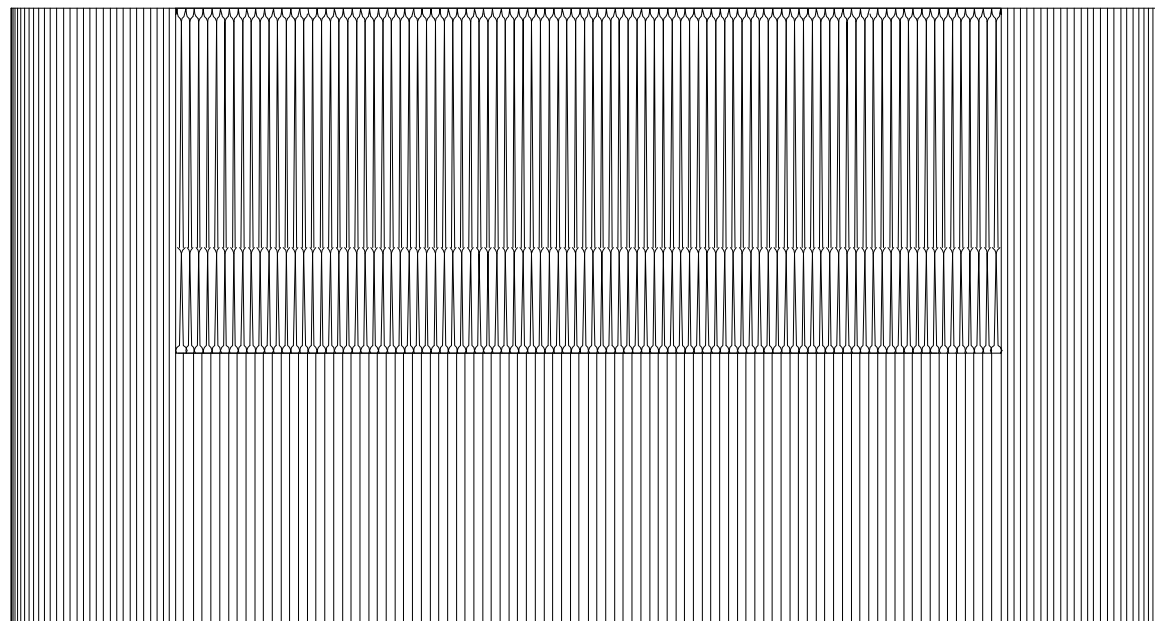


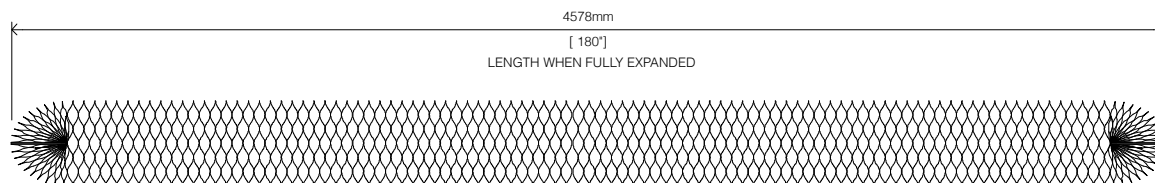
END PANEL VIEW



NOTCH SECTION



FRONT ELEVATION

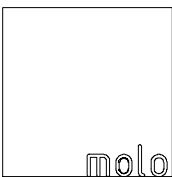


PLAN

NOTES:

- 160 layer notch in center of 220 layer wall (+/- 6 layers)
- no holes behind notch
- made to order
- existing die/no die fee for this notch type

This drawing and the content represented is the exclusive property of molo design ltd. and cannot be used without their prior written consent. For site installations verify all dimensions and notify molo of any on-site discrepancies prior to construction. Drawing scale may be affected by printing, scanning, or copying. Do not scale drawings



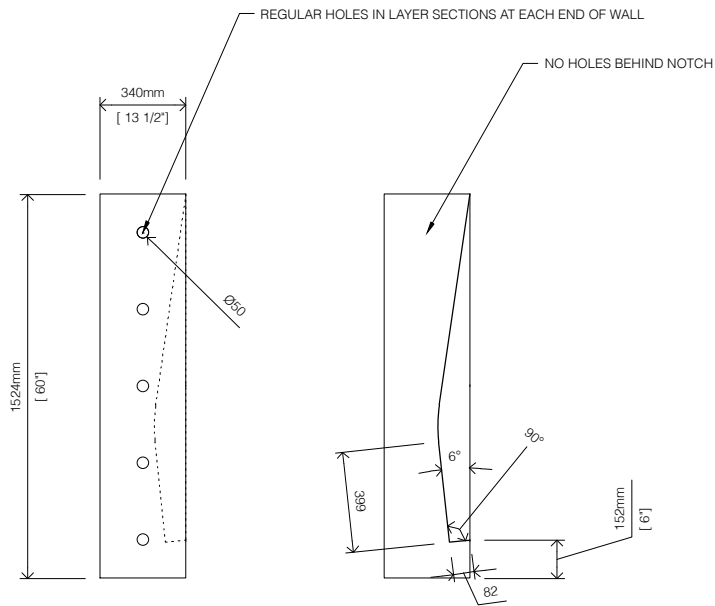
1470 Venables Street
Vancouver, BC
Canada V5L 2G7
+ 1 604 685 0340
www.molodesign.com

Designed by Stephanie Forsythe and Todd MacAllen, manufactured by molo and protected by one or more patents and/or design registrations held by molo, viewable at molodesign.com/ip

notch cut in softwall · 244 cm tall x 34 cm deep (8' tall x 13.3 inches)

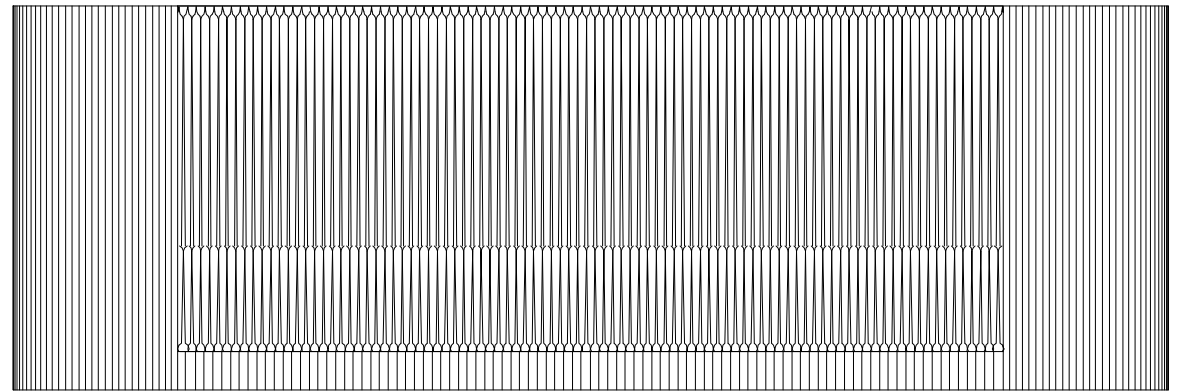
1:30
210707

01

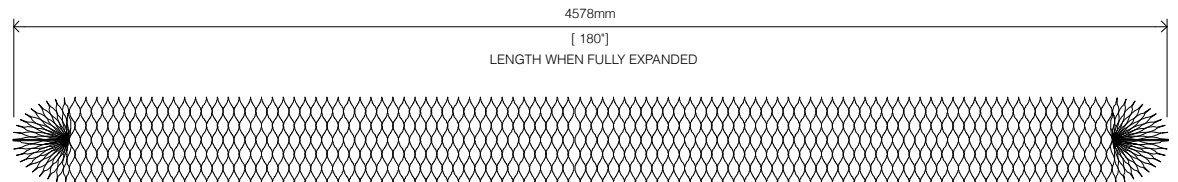


END PANEL VIEW

NOTCH SECTION



FRONT ELEVATION

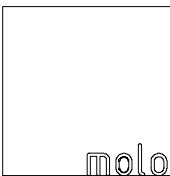


PLAN

NOTES:

- 160 layer notch in center of 220 layer wall (+/- 6 layers)
- no holes behind notch
- made to order
- existing die/no die fee for this notch type

This drawing and the content represented is the exclusive property of molo design ltd. and cannot be used without their prior written consent. For site installations verify all dimensions and notify molo of any on-site discrepancies prior to construction. Drawing scale may be affected by printing, scanning, or copying. Do not scale drawings



1470 Venables Street
Vancouver, BC
Canada V5L 2G7

+ 1 604 685 0340
www.molodesign.com

Designed by Stephanie Forsythe and Todd MacAllen, manufactured by molo and protected by one or more patents and/or design registrations held by molo, viewable at molodesign.com/ip

notch cut in softwall · 152 cm tall x 34 cm deep (5' tall x 13.3 inches)

1:30
210707