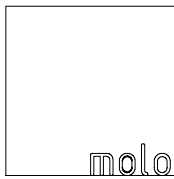


This drawing and the content represented is the exclusive property of molo design ltd. and cannot be used without their prior written consent. For site installations verify all dimensions and notify molo of any on-site discrepancies prior to construction. Drawing scale may be affected by printing, scanning, or copying. Do not scale drawings



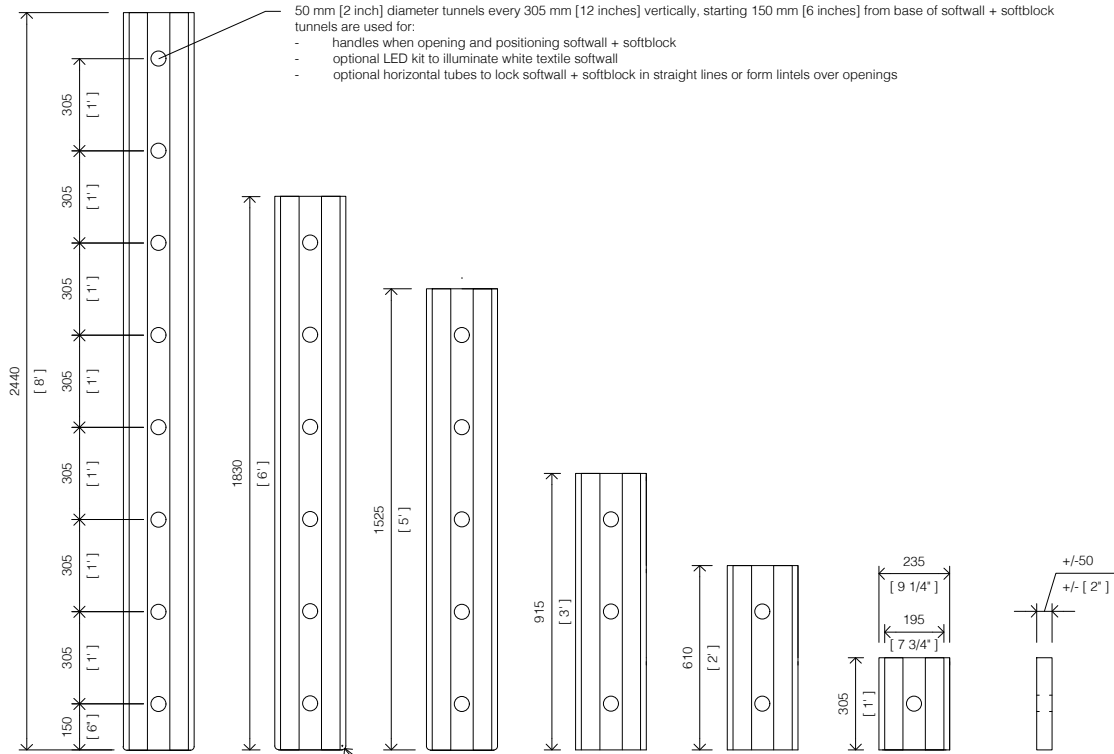
1470 Venables Street
Vancouver, BC
Canada V5L 2G7

+ 1 604 685 0340
www.molodesign.com

Designed by Stephanie Forsythe and Todd MacAllen, manufactured by molo and protected by one or more patents and/or design registrations held by molo, viewable at molodesign.com/ip

softwall + softblock specifications

235mm (9.25") wide softwall + softblock modular system



50 mm [2 inch] diameter tunnels every 305 mm [12 inches] vertically, starting 150 mm [6 inches] from base of softwall + softblock tunnels are used for:

- handles when opening and positioning softwall + softblock
- optional LED kit to illuminate white textile softwall
- optional horizontal tubes to lock softwall + softblock in straight lines or form lintels over openings

colours + materials

- natural brown paper
- black paper
- indigo blue paper
- white textile (translucent - can be illuminated with LED kit)
- black textile
- aluminum textile
- custom colour textile available in any pantone *made to order 12-16 week lead time

The honeycomb geometry of softwall + softblock expands to create a freestanding structure that is over one hundred times longer than its compressed form. Standard softwall + softblock elements expand to a maximum of 4.5 meters, or can be opened partially to achieve shorter lengths. Custom lengths and heights are also available and all elements compress for storage.

optional accessories

- LED kit
- steel anchor strip (to connect softwall + softblock to fixed walls, cabinetry or structure)
- wool felt handles
- steel base
- clipping system to mount signage + printed materials
- peg and strip (to reinforce and align horizontal layers of softblocks)
- horizontal tubes (to lock softwall + softblock in straight lines or form lintels over openings)
- glass vase

fire rating certificates available

- M1 · France (paper)
- B1 · Germany (paper)
- NFPA 701 · United States (paper)
- ASTM 84-05 Class A · United States (textile)

acoustic rating documents available upon request

brown and blue paper are made from wood harvested from FSC® Certified (FSC®C158591) responsible sources

compressed end panel view
standard height softwall + softblock

side view

19 mm [3/4"] radius cut at base of softwall + softblock to protect bottom edges from curling over time

** magnetic end panel
folded onto itself to provide structural rigidity to freestanding wall

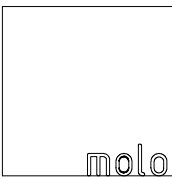
19 mm [3/4"] diameter space

* standard softwall + softblock opens to 4.5meters [15 feet]

magnetic end panel
in flat/open position for connection to another softwall
or steel strip accessory mounted to fixed architecture of a space
or to compress wall for storage
magnets 135 mm (5 3/8") apart

plan view · open softwall + softblock

This drawing and the content represented is the exclusive property of molo design ltd. and cannot be used without their prior written consent. For site installations verify all dimensions and notify molo of any on-site discrepancies prior to construction. Drawing scale may be affected by printing, scanning, or copying. Do not scale drawings



1470 Venables Street
Vancouver, BC
Canada V5L 2G7
+ 1 604 685 0340
www.molodesign.com

- * standard softwall + softblock are flexible in length and open to 4.5meters [15 feet] long when fully expanded. Custom lengths and heights available.
- ** ALWAYS FOLD MAGNETIC END PANELS ONTO THEMSELVES FOR STABILITY (unless you are connecting the end of softwall to another softwall or other ferrous steel surface)

Designed by Stephanie Forsythe and Todd MacAllen, manufactured by molo and protected by one or more patents and/or design registrations held by molo, viewable at molodesign.com/ip

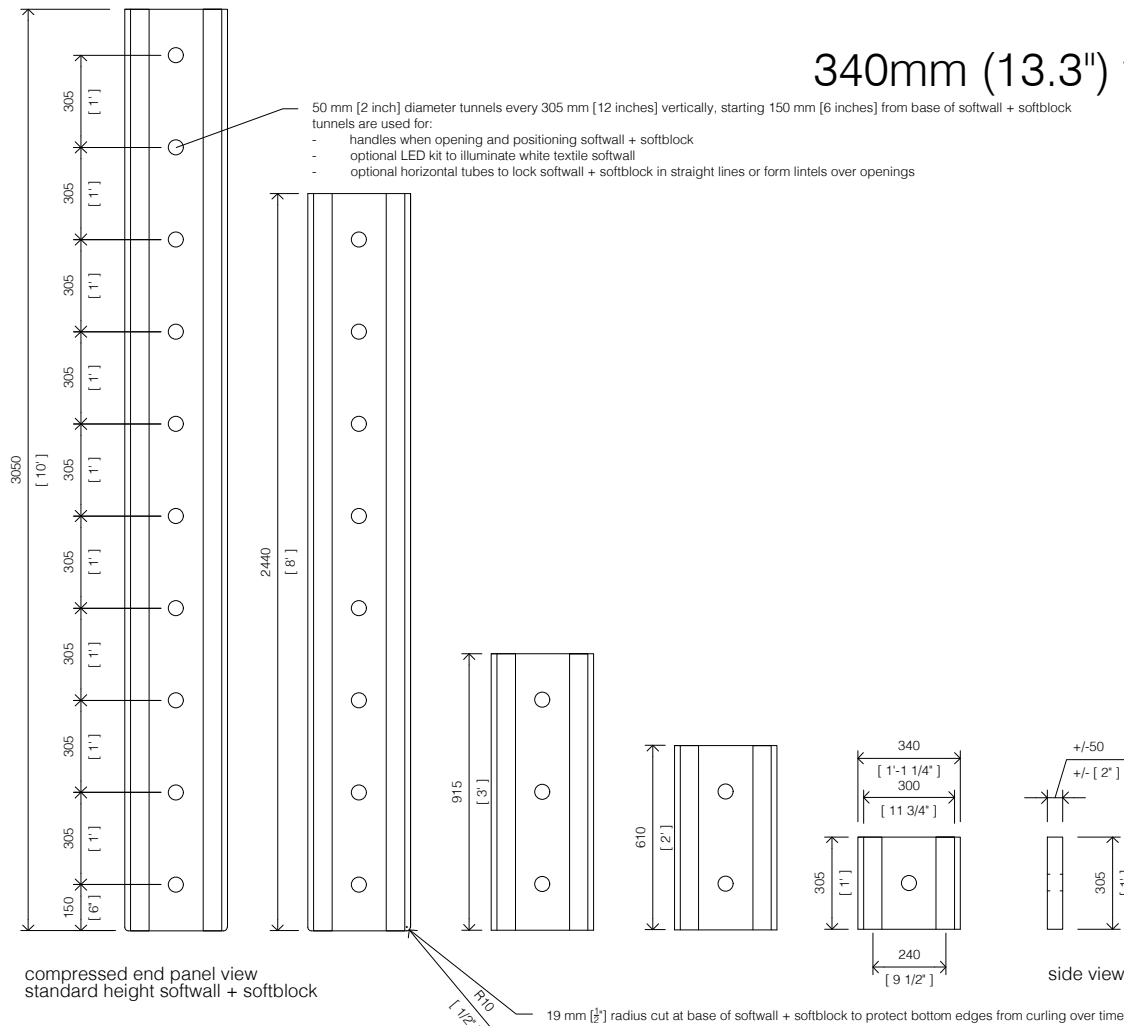
softwall + softblock specifications

1:25

230316

01

340mm (13.3") wide softwall + softblock modular system



colours + materials

- natural brown paper
- black paper
- indigo blue paper
- white textile (translucent - can be illuminated with LED kit)
- black textile
- aluminum textile
- custom colour textile available in any pantone *made to order 12-16 week lead time

The honeycomb geometry of softwall + softblock expands to create a freestanding structure that is over one hundred times longer than its compressed form. Standard softwall + softblock elements expand to a maximum of 4.5 meters, or can be opened partially to achieve shorter lengths. Custom lengths and heights are also available and all elements compress for storage.

optional accessories

- LED kit
- steel anchor strip (to connect softwall + softblock to fixed walls, cabinetry or structure)
- wool felt handles
- steel base
- clipping system to mount signage + printed materials
- peg and strip (to reinforce and align horizontal layers of softblocks)
- horizontal tubes (to lock softwall + softblock in straight lines or form lintels over openings)
- glass vase

fire rating certificates available

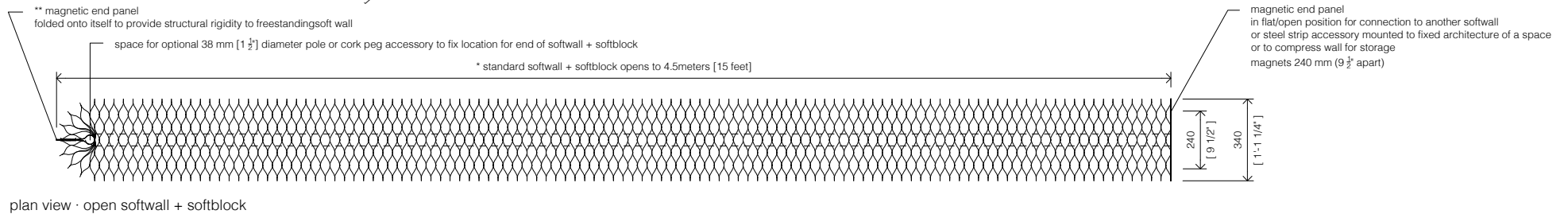
- M1 · France (paper)
- B1 · Germany (paper)
- NFPA 701 · United States (paper)
- ASTM 84-05 Class A · United States (textile)

acoustic rating documents available upon request

brown and blue paper are made from wood harvested from FSC® Certified (FSC®C158591) responsible sources

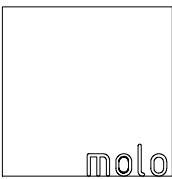
compressed end panel view
standard height softwall + softblock

side view



plan view · open softwall + softblock

This drawing and the content represented is the exclusive property of molo design ltd. and cannot be used without their prior written consent. For site installations verify all dimensions and notify molo of any on-site discrepancies prior to construction. Drawing scale may be affected by printing, scanning, or copying. Do not scale drawings



1470 Venables Street
Vancouver, BC
Canada V5L 2G7
+1 604 685 0340
www.molodesign.com

- * standard softwall + softblock are flexible in length and open to 4.5meters [15 feet] long when fully expanded. Custom lengths and heights available.
- ** ALWAYS FOLD MAGNETIC END PANELS ONTO THEMSELVES FOR STABILITY (unless you are connecting the end of softwall to another softwall or other ferrous steel surface)

Designed by Stephanie Forsythe and Todd MacAllen, manufactured by molo and protected by one or more patents and/or design registrations held by molo, viewable at molodesign.com/ip

softwall + softblock specifications

1:25

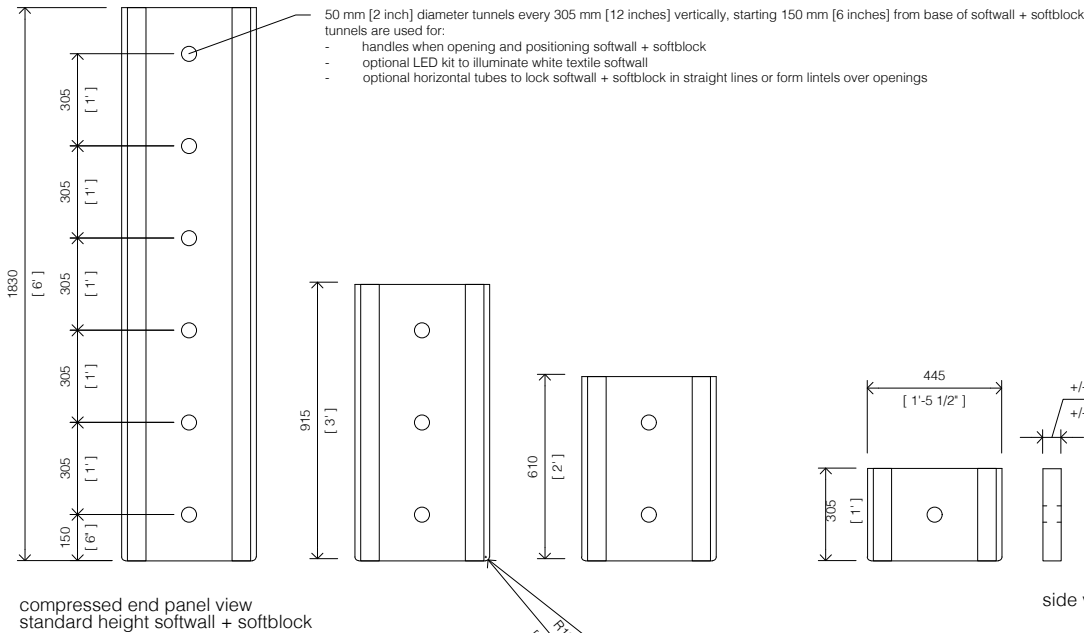
230316

02

heavyweight textile 445mm (17.5") wide softwall + softblock modular system

colours + materials

- white textile (translucent - can be illuminated with LED kit)*made to order 12-16 week lead time
- aluminum textile*made to order 12-16 week lead time



The honeycomb geometry of softwall + softblock expands to create a freestanding structure that is over one hundred times longer than its compressed form. Standard softwall + softblock elements expand to a maximum of 4.5 meters, or can be opened partially to achieve shorter lengths. Custom lengths and heights are also available and all elements compress for storage.

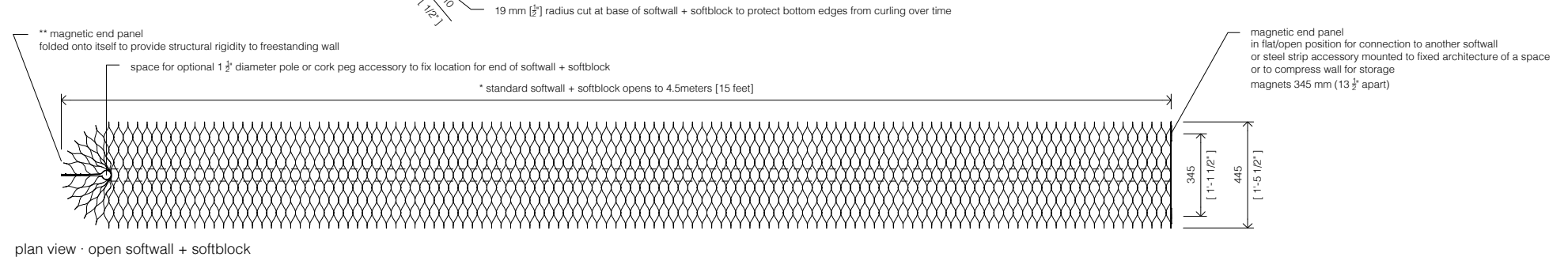
optional accessories

- LED kit
- steel anchor strip (to connect softwall + softblock to fixed walls, cabinetry or structure)
- wool felt handles
- steel base
- clipping system to mount signage + printed materials
- peg and strip (to reinforce and align horizontal layers of softblocks)
- horizontal tubes (to lock softwall + softblock in straight lines or form lintels over openings)
- glass vase

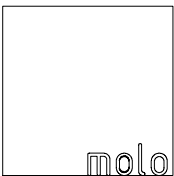
fire rating certificates available

- ASTM 84-05 Class A · United States (textile)

acoustic rating documents available upon request



This drawing and the content represented is the exclusive property of molo design ltd. and cannot be used without their prior written consent. For site installations verify all dimensions and notify molo of any on-site discrepancies prior to construction. Drawing scale may be affected by printing, scanning, or copying. Do not scale drawings



1470 Venables Street
Vancouver, BC
Canada V5L 2G7
+ 1 604 685 0340
www.molodesign.com

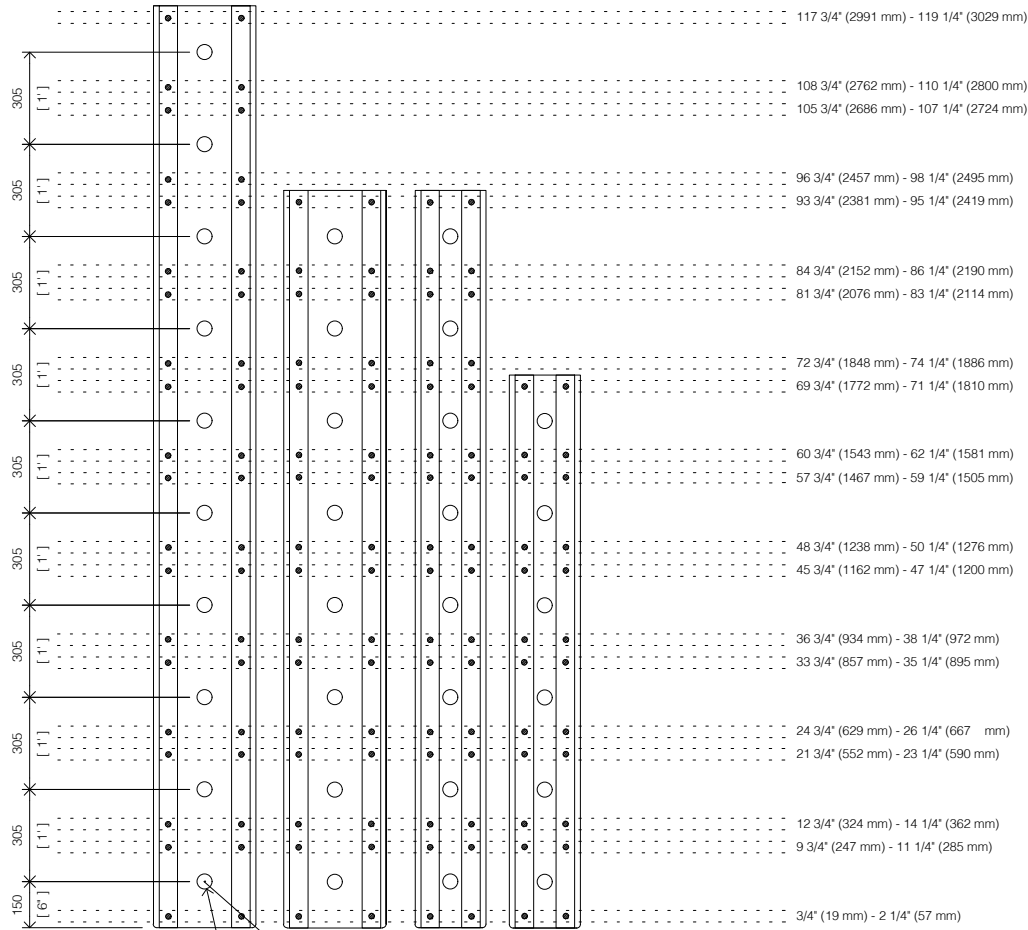
Designed by Stephanie Forsythe and Todd MacAllen, manufactured by molo and protected by one or more patents and/or design registrations held by molo, viewable at molodesign.com/ip

softwall + softblock specifications

1:25
230316

custom cut guidelines for softwall + softblock modular system

do not cut between the ranges listed below (zones with magnets)



legend

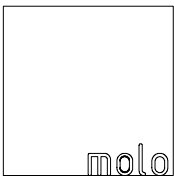
- magnets
- die cut holes through body of product

guidelines for custom cut softwall + softblock

- lead times available upon request
- custom cuts can occur anywhere between magnets on all softwalls + softblocks

50 mm [2 inch] diameter tunnels every 305 mm [12 inches] vertically, starting 150 mm [6 inches] from base of softwall + softblock
 - custom cuts can pass through these tunnels if client does not have an issue with the exposed part of tunnel
 or if client has a long enough lead time for made to order production the tunnels can be omitted

This drawing and the content represented is the exclusive property of molo design ltd. and cannot be used without their prior written consent. For site installations verify all dimensions and notify molo of any on-site discrepancies prior to construction. Drawing scale may be affected by printing, scanning, or copying. Do not scale drawings



1470 Venables Street
 Vancouver, BC
 Canada V5L 2G7
 + 1 604 685 0340
 www.molodesign.com

Designed by Stephanie Forsythe and Todd MacAllen, manufactured by molo and protected by one or more patents and/or design registrations held by molo, viewable at molodesign.com/ip

softwall + softblock specifications

1:25
 230316