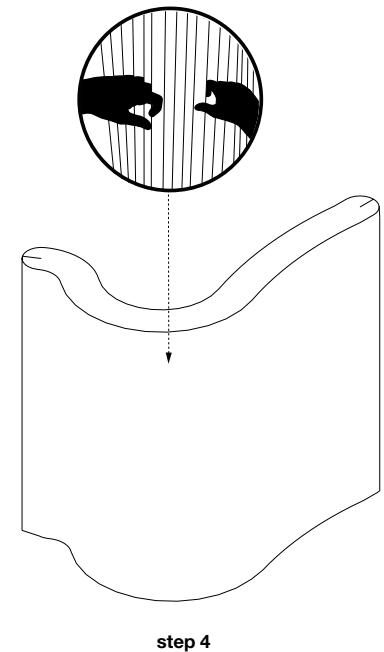
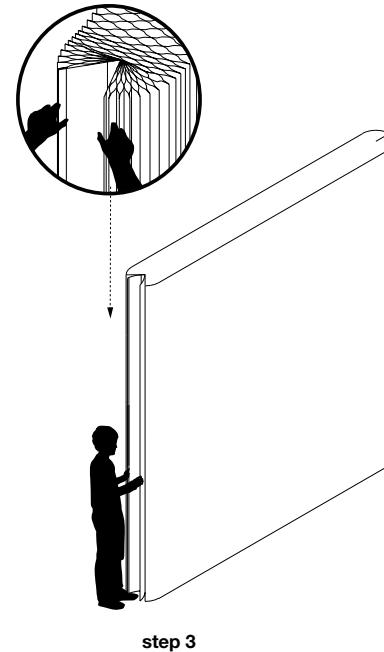
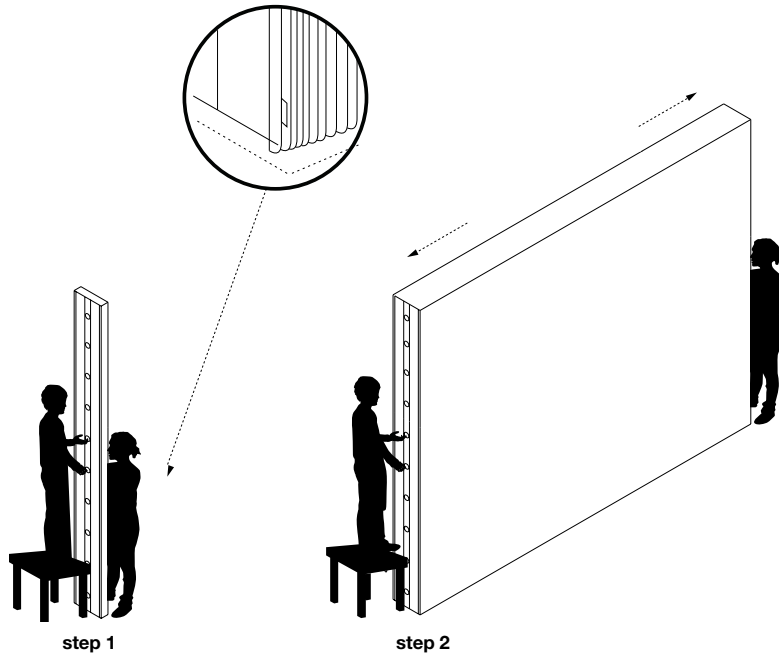


# 3m (10') softwall · quickstart



## set up

**step 1:** Stand softwall with rounded edge at bottom. 3 meter tall softwall should be opened by two people. It is easier to open softwall if person 1 stands on a raised surface with a firm hold on the circular holes in the end panel.

**step 2:** With person 1 stationary and firmly holding softwall, person 2 begins to pull open softwall, first expanding the columns of honeycomb cells nearest the end panel and then continuing with each adjacent layer. While opening, lift lower end of softwall 3 centimeters (1 inch) off the floor, rather than dragging it. Once the first 20-30 layers have expanded, continue opening softwall to its full length. Hold softwall in this expanded position for a few minutes to stretch it. If softwall is not staying open to the desired length (up to a maximum length of 4.5 meters (15 feet), repeat stretching process.

note: softwall may flop over the head of person 2 while opening. If this happens, simply continue to open the wall and it will pull itself up.

**step 3:** Fold each magnetic end panel vertically onto itself as shown in diagram of step 3 above. This will stabilize softwall, so that it is completely freestanding. You may also connect the magnetic end panels of one softwall to that of an adjacent softwall to create longer expanses, or connect it to other steel surfaces. Please ask molo about steel strip accessory which can provide an anchor point for softwalls.

**step 4:** softwall is most stable in an S-shaped curve. To rearrange the position / shape of the softwall, hold the fins between your knuckles, lift gently and pull into place. Pulling softwall is better than pushing into desired position, as pushing may crush and soften the fins on the bottom of the wall.

click [here](https://molodesign.com/app/uploads/2023/08/softwall-extended-useguide) for softwall use guide ((<https://molodesign.com/app/uploads/2023/08/softwall-extended-useguide>).

## use + care

- Ensure that floor is flat, clean and dry before setting up softwall.
- textile softwall + softblock are water, tear and UV resistant (will not discolour in sunlight).
- Baby wipes work well for cleaning textile softwall + softblock (or any nonabrasive cloth + water). If there is a stubborn stain on textile softwall try "Mr. Clean magic eraser", use with care as they can abrade the textile.
- textile softwall + softblock are made from an antistatic material which does not attract dust. Compressing and then expanding softwall + softblock will push air through the cells, blowing out dust that has collected inside.
- softwall + softblock will benefit from periodically being closed and left in a compressed state for a few days in order to regain shape memory.
- Clean optional wool felt handles with a lint brush or damp cloth.
- It is possible to repair small tears in softwall, ask for details.
- softwall + softblock are intended to have a long, useful life. Nevertheless, they are made with material that is 100% recyclable (just remove magnetic end panels). The paper used for brown and blue softwall + softblock is made from wood harvested from FSC® Certified (FSC® C158591) responsible sources. textile softwall + softblock is 100% polyethylene and is ♻️ in the recycling stream.

Designed by Stephanie Forsythe and Todd MacAllen, manufactured by molo and protected by one or more patents and/or design registrations held by molo, viewable at [molodesign.com/ip](https://molodesign.com/ip)