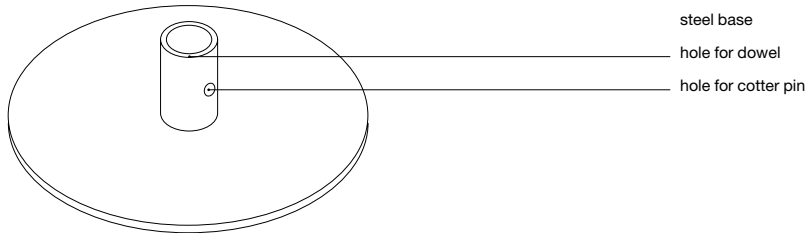


165mm (6.5") Ø base for softwall + softblock · use guide

anatomy

A white powder coated steel base can be used to anchor softwall + softblock to the floor. wood dowel not included – steel base is designed to fit a standard wood dowel 38mm (1.5") that you will be able to easily source locally.

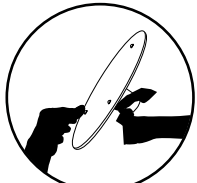
The inner diameter of the base is 40.5mm (1.6"). This was made oversized to allow for some tolerance in the dowel. Using masking tape or another material, shim the dowel so that it fits snugly into the base.



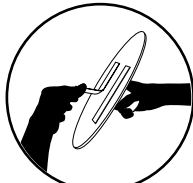
set up – methods of affixing base to floor

Method A: Affix the provided VST double faced tape to the base and then to the floor. NOTE: VST tape is strong and may damage floor when removed, test in discreet location if concerned.

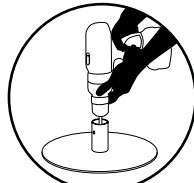
Method B: Screw the base to the floor through the hole in the centre.



bumpers

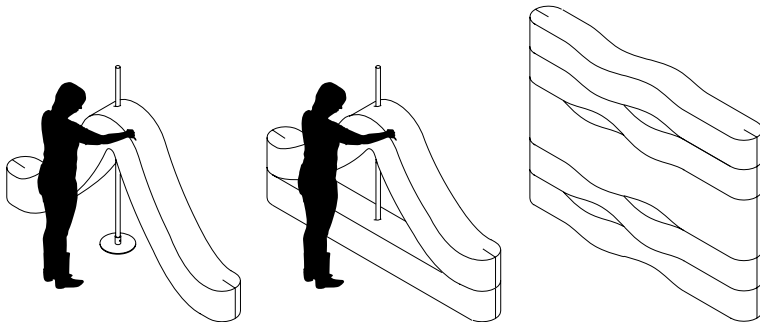


VST tape

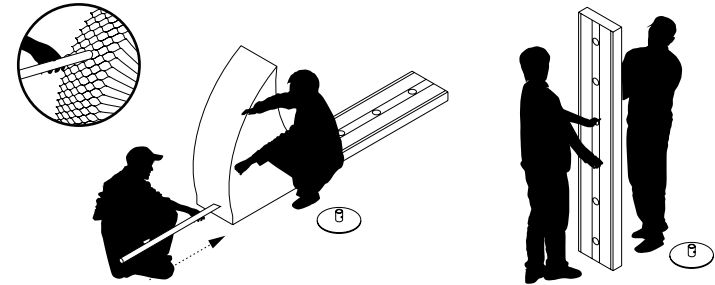


screwed

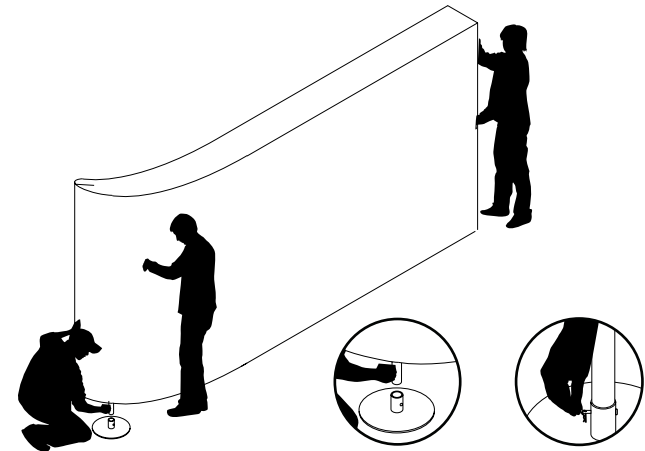
set up – inserting base into softblock



set up – inserting base into softwall



Insert dowels between honeycomb cells. With two people, lift the compressed softwall upright. Pull softwall open and close end panels for stability.



Proceed with three people, two people keeping softwall stable while the third person lifts the bottoms of each dowel, within the softwall, up and into the steel bases.

use + care

· Ensure that the floor surface is flat, clean and dry before setting up softwall.

Designed by Stephanie Forsythe and Todd MacAllen, manufactured by molo and protected by one or more patents and/or design registrations held by molo, viewable at molodesign.com/ip