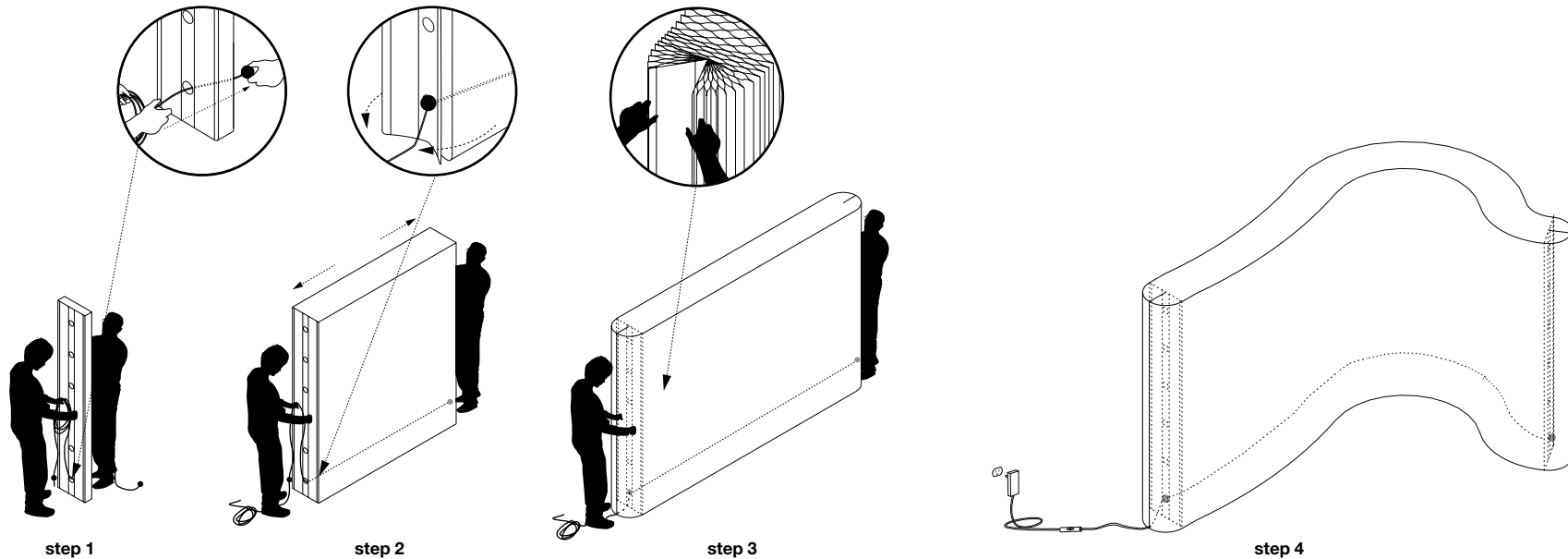


LED for softwall + softblock · use guide



set up

step 1: Stretch softwall (without LED) by following instructions on molo's [softwall use guide](https://molodesign.com/app/uploads/2023/08/softwall-extended-useguide.pdf) (<https://molodesign.com/app/uploads/2023/08/softwall-extended-useguide.pdf>)

Recompress softwall and pass one of foam balls attached to LED ribbon through circular hole tunnel with LED diodes facing toward the centre of the wall's height. See following page for recommended LED positions.

step 2: With one person holding softwall and foam ball at one end, the second person opens softwall over LED ribbon until they reach the foam ball at the other.

step 3: Push foam balls fully inside of holes and close softwall's end panels.

step 4: Connect power wire or coupler + power wire to LED ribbon(s) and feed downward inside the end panels to reach the floor. Twist-lock power wire to transformer and plug in. A quick click of the dimmer turns LEDs on or off. Press and hold to change the brightness. The dimmer will remember your last setting each time it is turned on.



parts for multiple LEDs

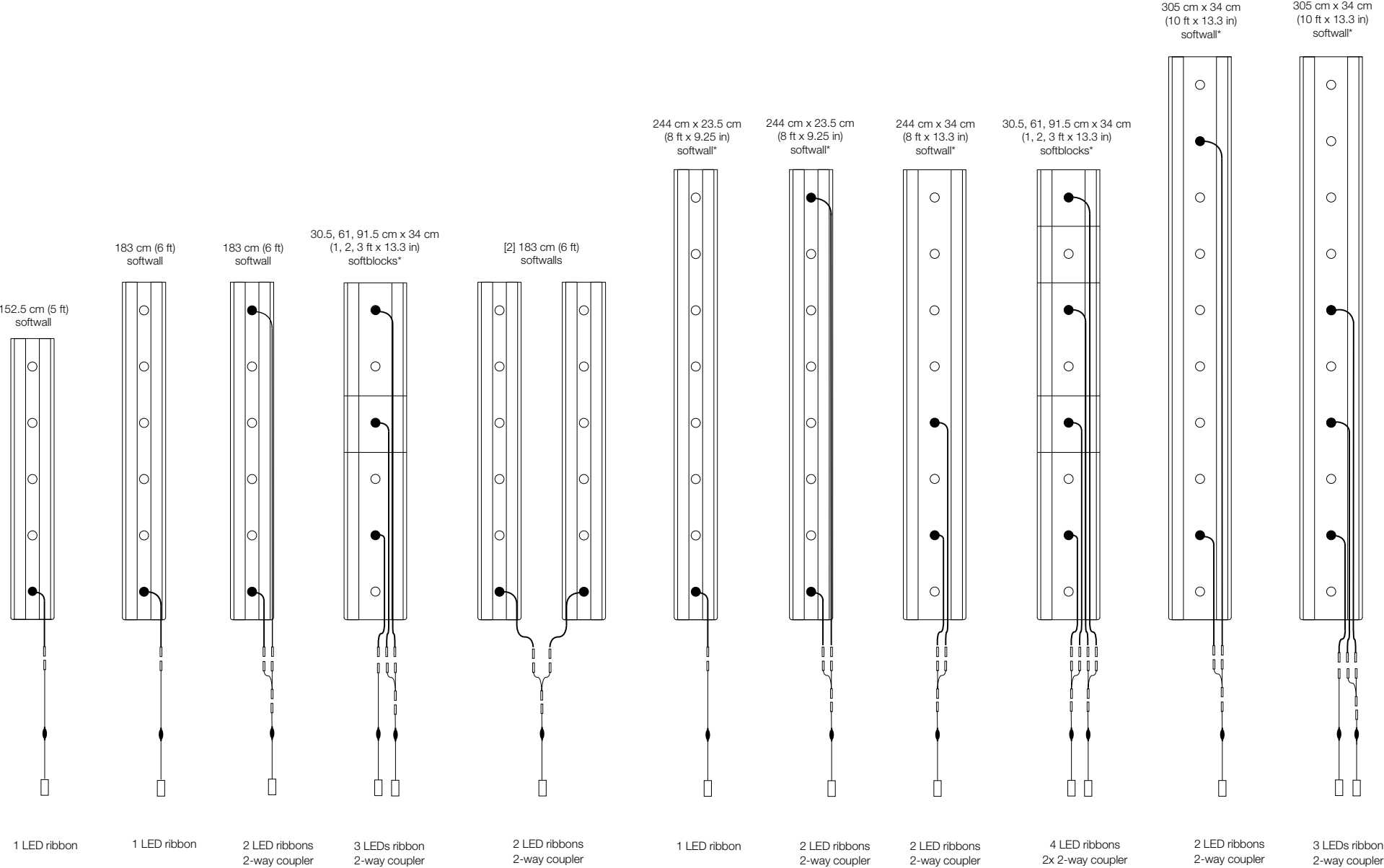
coupler	connects multiple LED ribbon power wires to single transformer
transformer	plugs into wall outlet. A 40W transformer can only be used with a singular LED ribbon. Use a 60W transformer for 2 LED strips
15' extension cord (optional)	used between the power wire and coupler to extend length of power wire up to 35' (10.5m), or run through holes in softwall to power multiple LEDs from a single plug

use + care

· LED and electrical components are for indoor use only.

Designed by Stephanie Forsythe and Todd MacAllen, manufactured by molo and protected by one or more patents and/or design registrations held by molo, viewable at molodesign.com/ip

recommended positions of LEDs



* FR textile softwalls are 29 cm / 45 cm (11.5 in / 17.75 in) wide