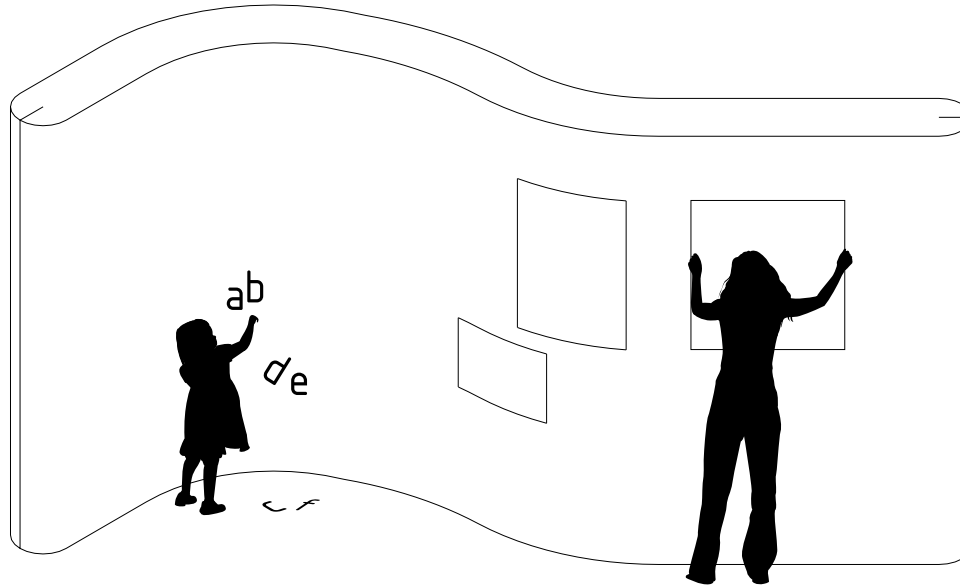
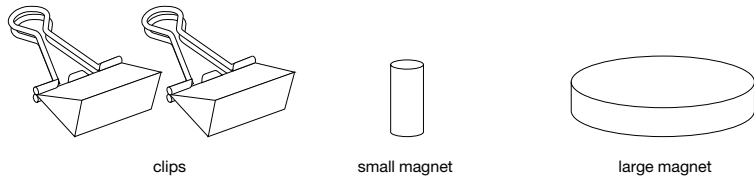


clipping system for softwall + softblock · use guide

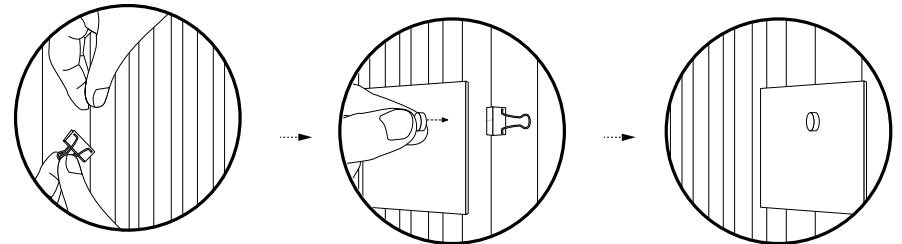


anatomy



Lightweight materials such as paper, textiles and foam board signs can be usefully clipped to the vertical fins of softwall + softblock with steel clips and magnets. Thin powder-coated steel letters may also be fastened to softwall with the same method of clipping.

set up - attaching signage with clipping system



step 1: Attach a steel clip to a vertical fin.

step 2: Flip back the wire handles. secure material to be hung in front of clip with a magnet.

Designed by Stephanie Forsythe and Todd MacAllen, manufactured by molo and protected by one or more patents and/or design registrations held by molo, viewable at molodesign.com/ip