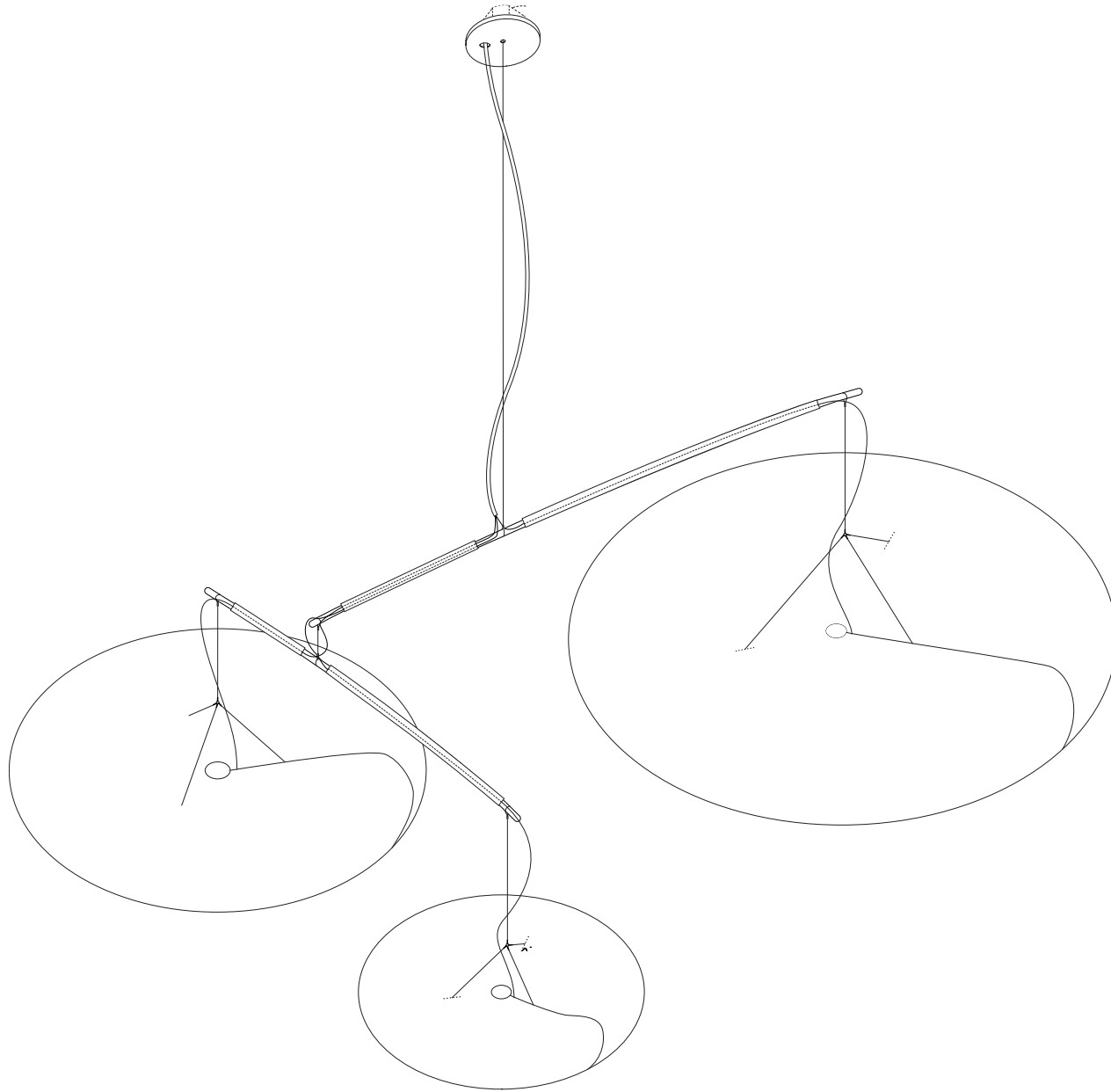
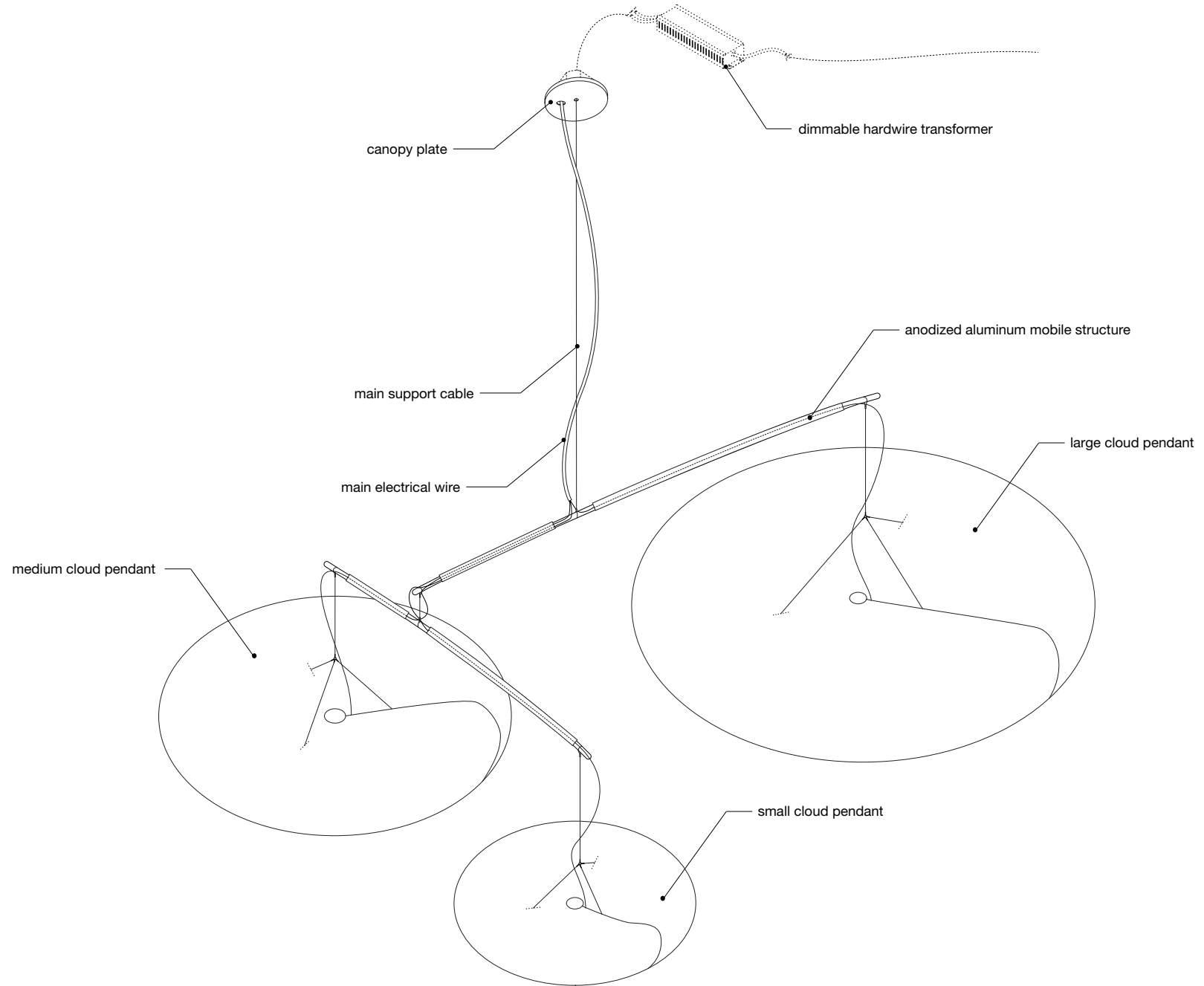


cloud softlight medium mobile · installation guide

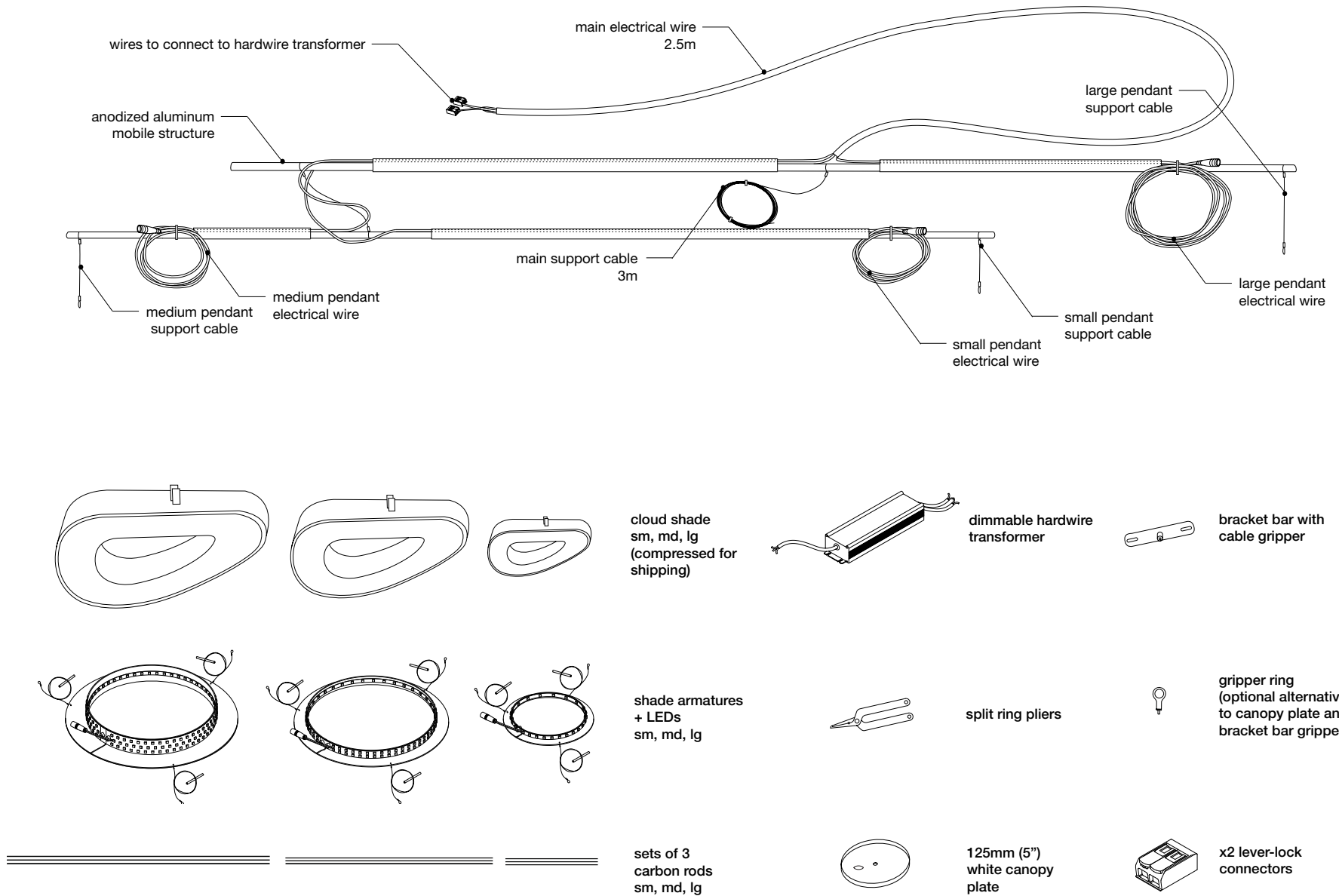


molo

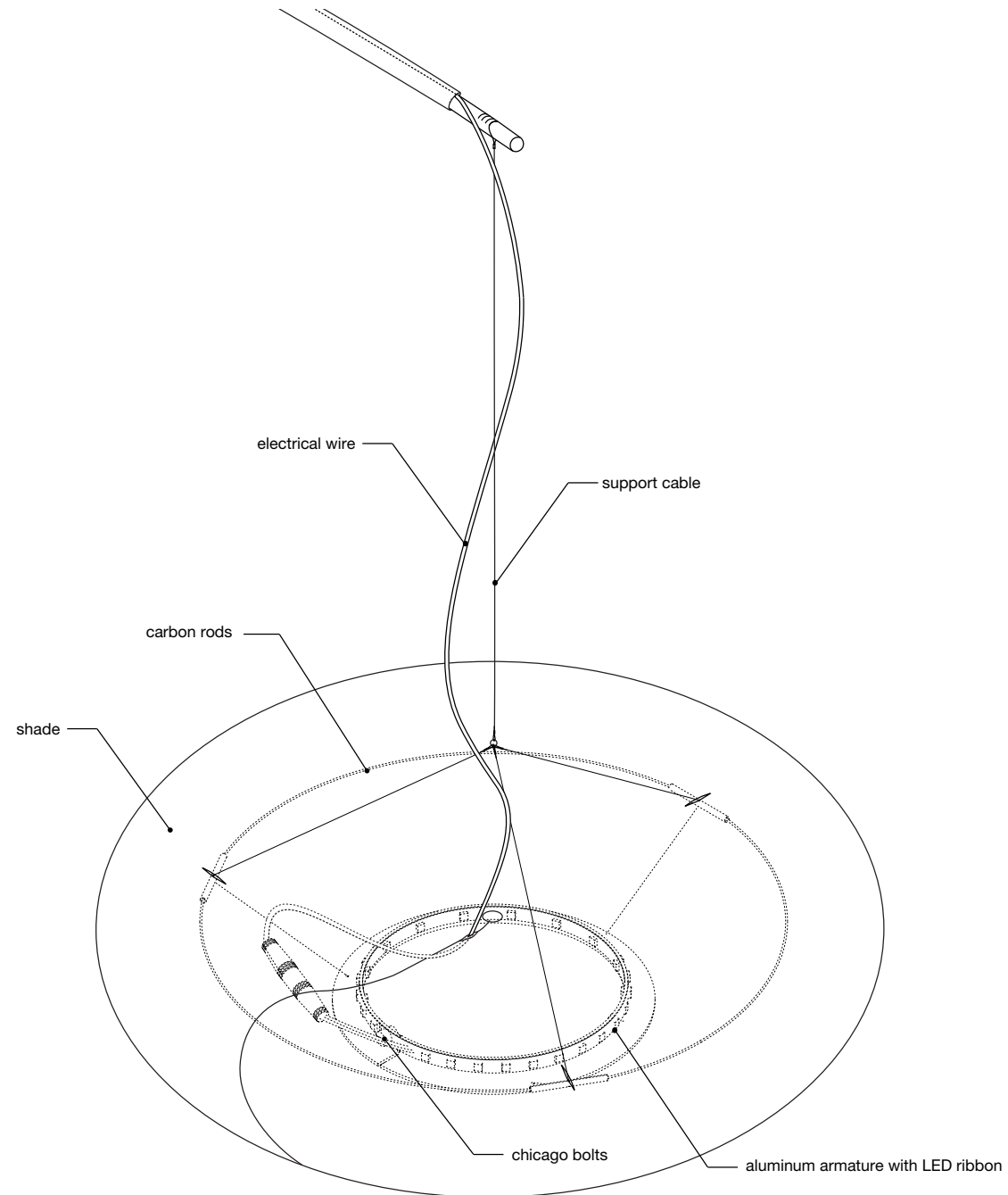
medium cloud mobile anatomy



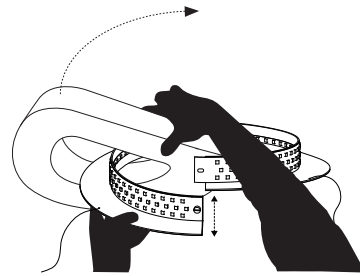
medium cloud mobile parts



anatomy of cloud pendant within mobile

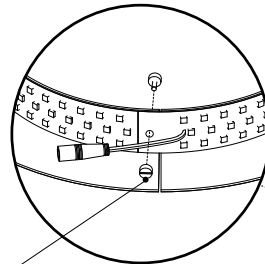


cloud pendant assembly

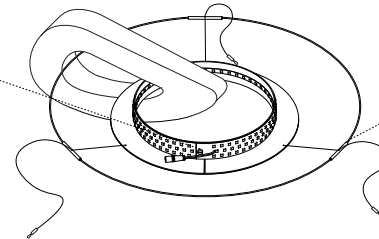


step 3

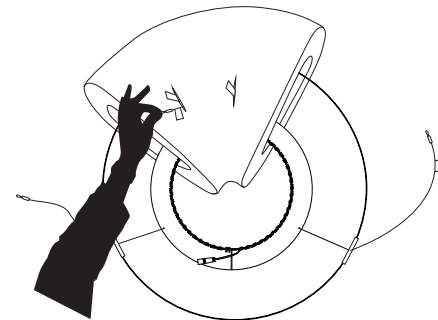
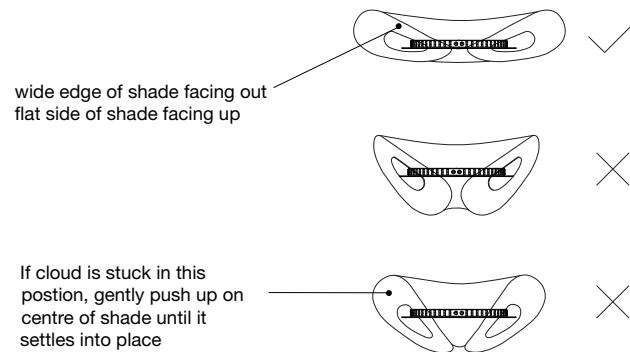
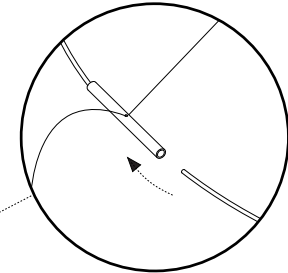
fasten with provided
chicago bolt



step 4



step 5



step 6

step 1: Review [cloud pendant instructional video](http://www.molodegign.com/instructional-video-cloud-pendant) (www.molodegign.com/instructional-video-cloud-pendant)

step 2: Stretch cloud shade carefully, as shown in video linked above.

step 3: Undo the chicago bolt and split the angle ring LED armature by pulling the open ends of the ring apart vertically. Thread the armature through the cloud shade with the horizontal flange facing down. Make sure the flat side of the shade is facing up and the wider end of the shade is facing outwards.

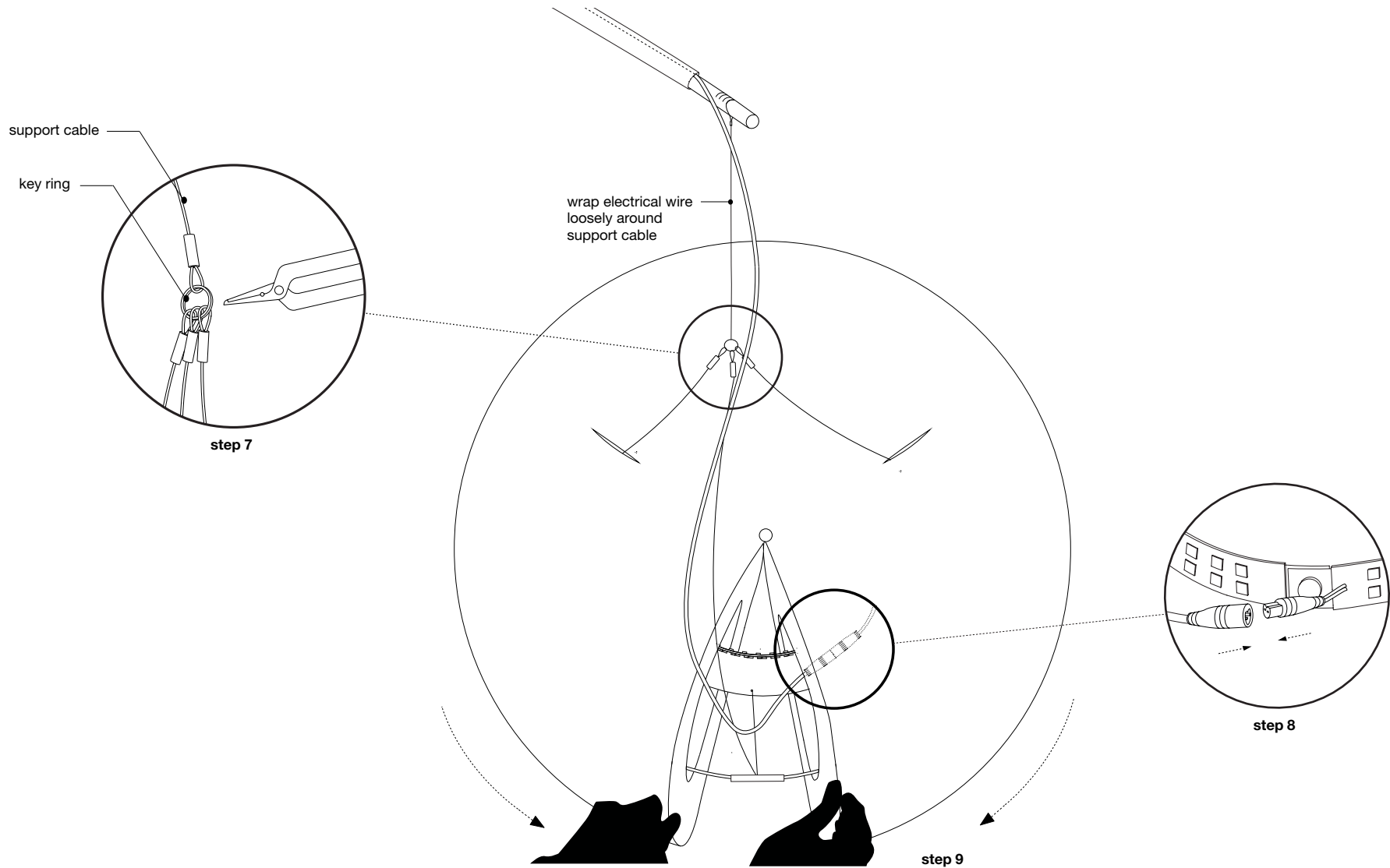
IMPORTANT: If this step is not done correctly the cloud will look “droopy” when installed. The cloud should sit relatively flat and undulate gently when installed correctly.

step 4: Close armature ring and fasten through hole in LED ribbons and aluminum ring using provided chicago bolt.

step 5: Complete the outer ring of the armature by inserting the white painted carbon rods into the aluminum tube connectors (fixed to cables). The rods will flex to create a circle inside the cavity of the shade.

step 6: Feed two of the three support cables through the larger cells of the shade. Make sure the red tagged wire passes through the red tagged cell and the blue tagged wire passes through the blue tagged cell . **Remove tags.**

cloud pendant assembly



step 7: Use split ring pliers to open the key ring attached to main support cable and attach the three support cables from cloud pendant armature.

step 8: Connect electrical wire to LED ribbon inside shade (be sure to line up matching groove in male and female ends of clear connectors).

step 9: Close the shade around the armature by grabbing 20+ layers of the outer fins and pulling the magnetic end panels around the ring until they connect together. The third steel support cable and electrical wire should be sandwiched between the two closed magnetic end panels.

medium cloud mobile installation

step 10

bolt bracket bar with cable gripper and magnets to junction box

- junction box, supplied by customer, must be properly installed to support the weight of cloud softlight purchased

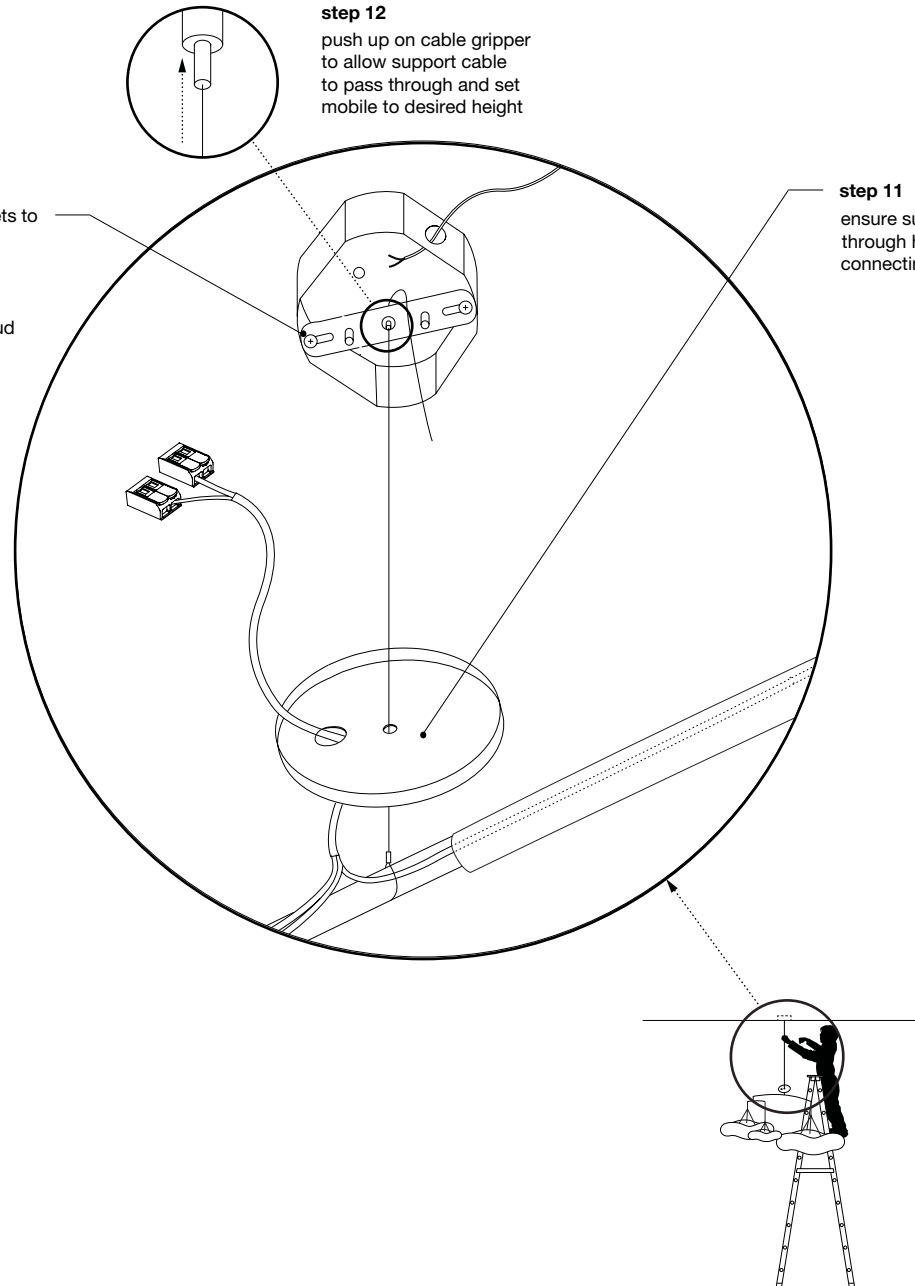
- medium mobile - 6.0kg (13.2lbs)

step 12

push up on cable gripper to allow support cable to pass through and set mobile to desired height

step 11

ensure support cable + electrical wire pass through holes in canopy plate prior to connecting support cable to cable gripper



medium cloud mobile installation

