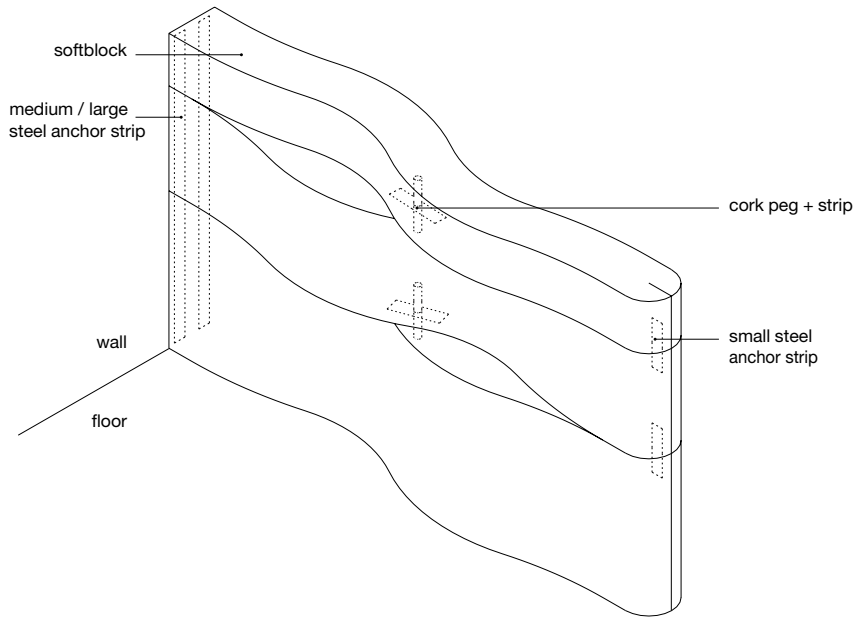


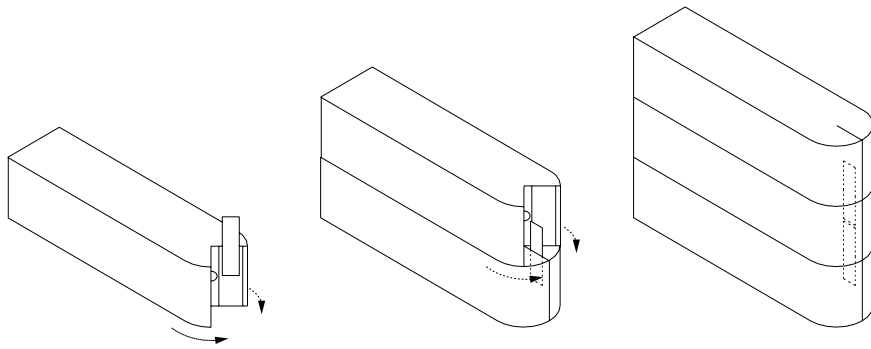
# peg + steel anchor strip for softblock · use guide

## anatomy



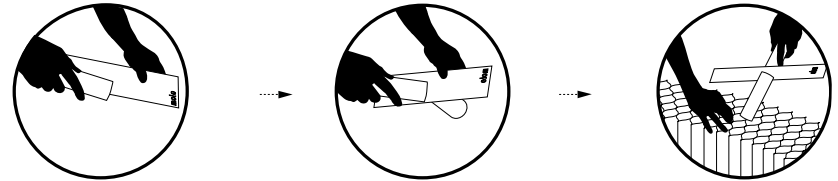
## set up – inserting small steel strips

White powder coated steel anchor strips can be used to interlock the magnetic end panels of one softblock to another when they are stacked on one another. This is a tidy way to have everything line up at the ends of the softblock structure and strengthens stability with all softblocks connected as a single unit.

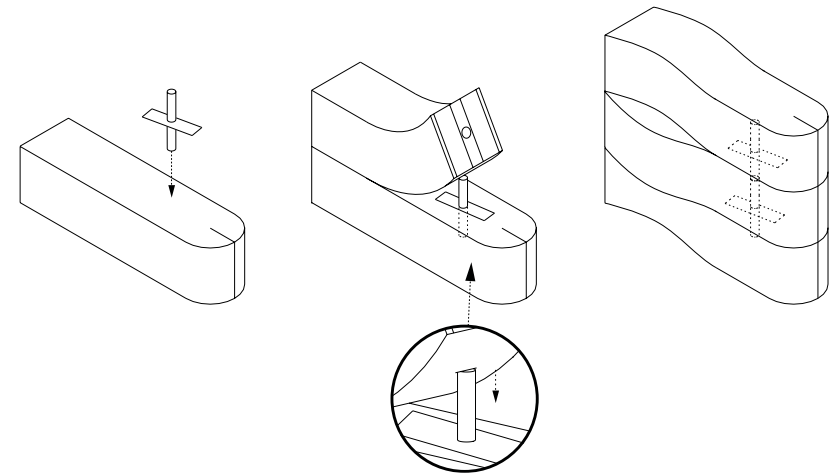


## set up – inserting cork peg + steel anchor strip

peg + strip are not necessary for creating a wall from softblocks, but reinforce joints between horizontal layers and will add stability for lively or windy locations.



\* A set of cork pegs magnetically connect to a white powder coated steel anchor strip.



the cork peg and disc act as a control point.  
The softblocks can be curved and adjusted.

insert cork peg and disc into a desired area  
of the softblock.

## set up – attaching steel strips to wall

steel anchor strips are useful for connecting the magnetic end panels of softwall + softblock to the fixed architecture of the space in a simple, visually discreet way.

Designed by Stephanie Forsythe and Todd MacAllen, manufactured by molo and protected by one or more patents and/or design registrations held by molo, viewable at [molodesign.com/ip](http://molodesign.com/ip)