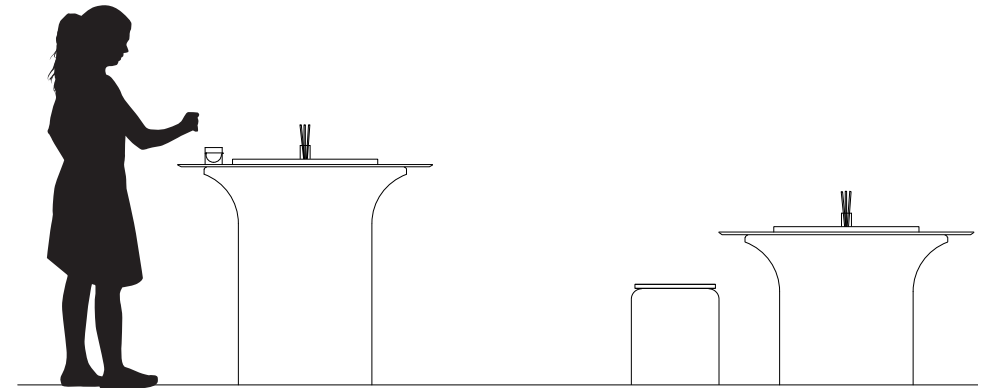
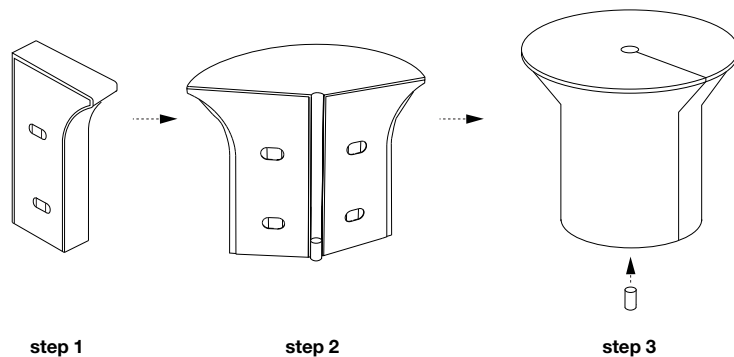


opening cantilever table



set up

step 1: Set the compressed cantilever table base with narrow edge oriented toward the floor.

step 2: With one person at each end, grip the handles of the base and walk apart in a straight line, slightly lifting the leading edges off the floor and keeping the end panel straight. Pull until the base is stretched as far as it can go.

step 3: Compress the base and connect magnetic end panels around the short wood dowel to hold table in circular expanded form*. If magnets spring apart, base needs more of a stretch.

step 4: Place foam grip disc onto paper table and insert glass base component of pencil holder/vase into hole at centre. Place table top (or other solid surface top) on top. Insert inner sleeve of glass pencil holder/vase through table top and into base. If using as pencil holder, place wood dowel into glass opening; do not use dowel if using as flower vase. Fit paper sketching circles over glass pencil holder (easier if you add small sections of paper at a time). Pencil holder will act as a spindle so that paper sketching circles can be rotated.

step 5: Have fun sketching and spinning to share ideas with others at the table!

*cantilever paper table can also connect magnetically in series to form larger diameter "donut" shaped tables or long, winding serpentine tables. Please ask for details.

use + care

- When separating the magnetic end panels, pry fingers between the connected panels to release the magnets rather than pulling on the fins.
- Clean table top with a soft cloth, lightly dampened with warm water then quickly dry the surface with a dry soft towel. Never use abrasives or detergents. Never soak or let water sit.
- textile cantilever base is water, tear and UV resistant (will not discolour in sunlight).
- kraft paper cantilever base is not suitable for wet or humid environments. Try to avoid contact between base and liquids. If base does get wet, leave in expanded form to dry out.
- cantilever paper table is treated with a fire retardant and will not hold a flame. Contact molo for specific fire rating information by country.
- cantilever table is intended to have a long, useful life. Nevertheless, bases are made with material that is 100% recyclable (just remove magnetic end panels). The paper used for brown and blue cantilever table are made from wood harvested from FSC® Certified (FSC® C158591) responsible sources. textile bases are 100% polyethylene and are ♻️ in the recycling stream.
- Compressed cantilever table bases can be stored horizontally or vertically. We recommend you keep the original packaging for transport or for extended periods of storage.
- Custom tops for cantilever table can be produced locally in any desired material. Contact molo for technical specifications.

Designed by Stephanie Forsythe and Todd MacAllen, manufactured by molo and protected by one or more patents and/or design registrations held by molo, viewable at molodesign.com/ip