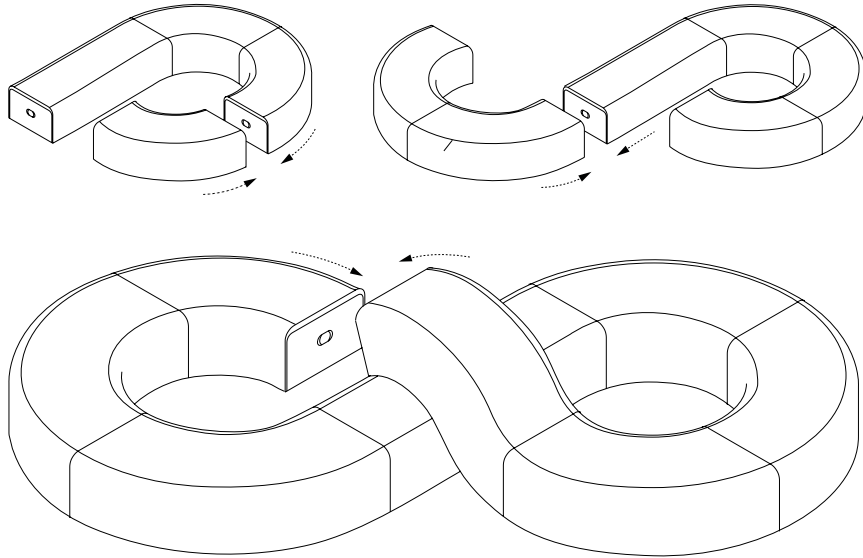


connecting softseat modular system · use guide

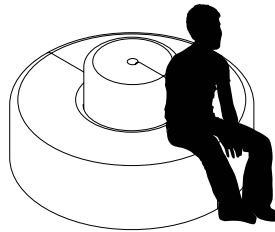
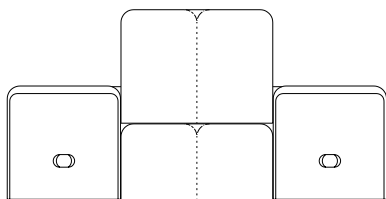
serpentine bench



softseats can be joined by their magnetic end panels to create long benches of any serpentine, circular or straight configuration.

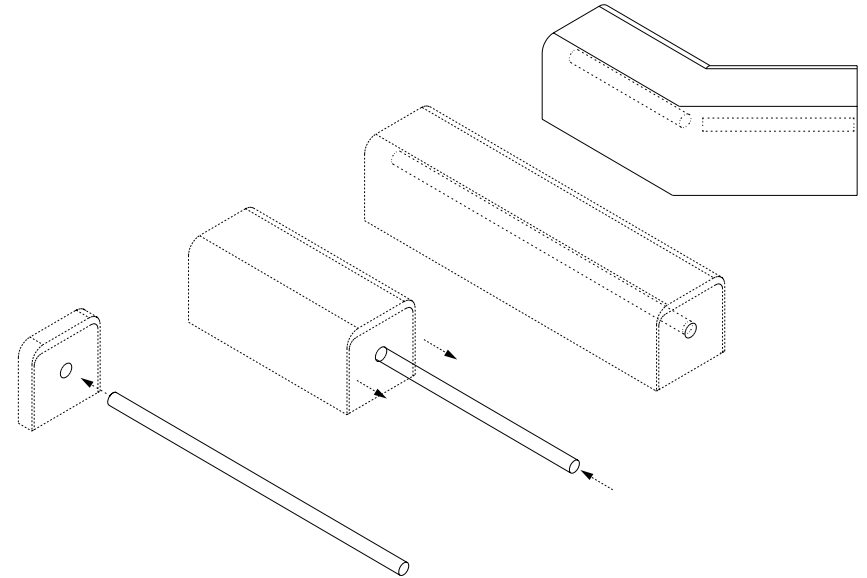
round bench with back rest

section view



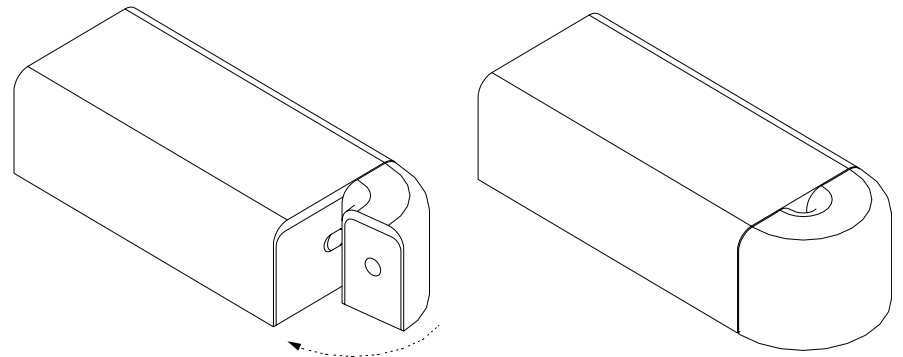
Create circular benches by using two 455mm (18") tall x 910mm ϕ (36" ϕ) fanning stools to wrap around a planter or smaller stools. When using fanning stools in the center, stack a 455mm (18") tall x 620mm ϕ (24" ϕ) stool on a 310mm (12") tall x 620mm ϕ (24" ϕ) stool to prevent it from moving out of place when leaned on.

creating straight and angled benches with tubes



Insert kraft tube inside of hole and pull fanning bench open along tube.

capping bench detail (optional)



Attach a 405mm ϕ (16" ϕ) fanning stool to one side of an 455 mm (18") wide bench.

Designed by Stephanie Forsythe and Todd MacAllen, manufactured by molo and protected by one or more patents and/or design registrations held by molo, viewable at molodesign.com/ip