

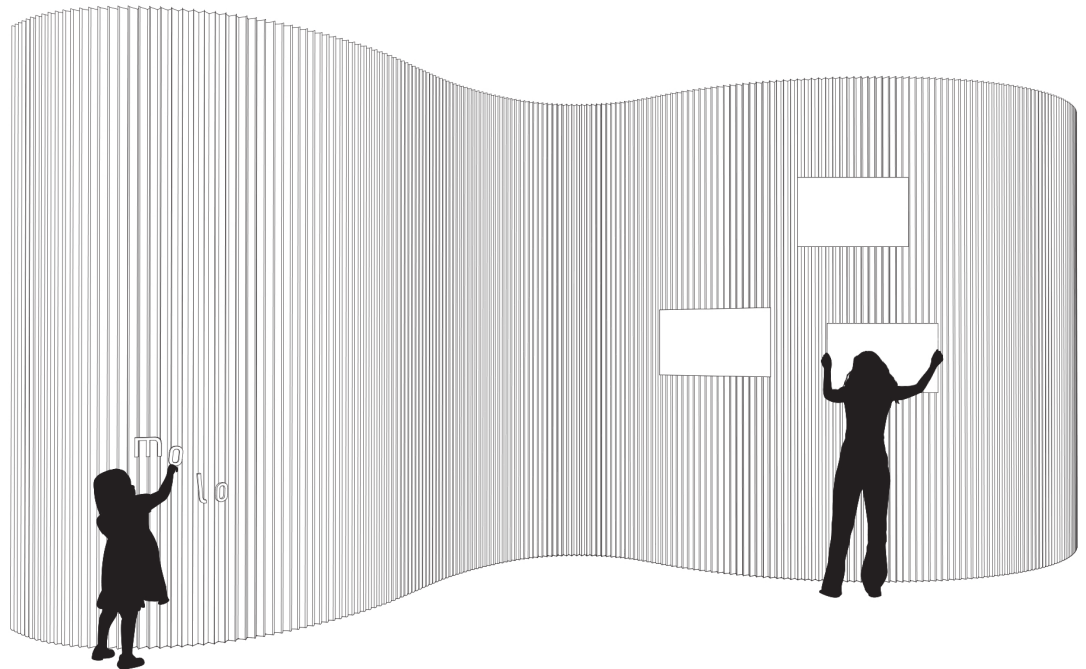


**softwall + softblock
signage + graphics**

1470 Venables Street
Vancouver, BC
Canada V5L 2G7

+1 604 685 0340
info@molodesign.com
molodesign.com

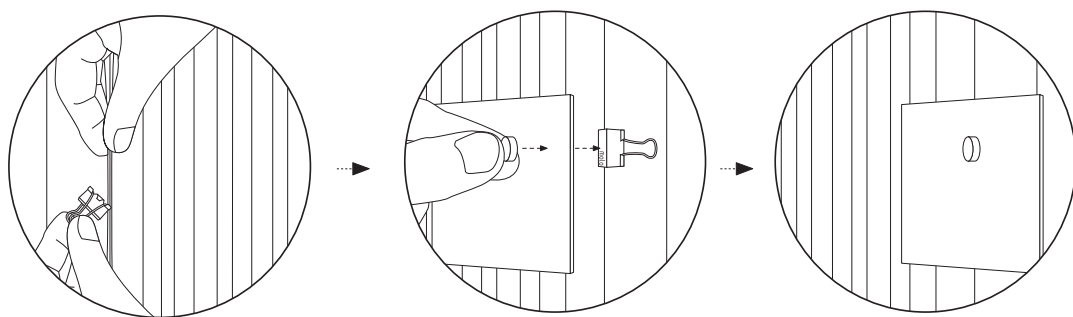
ig studio_molo
ig molo_projects
p molostudio



product resources

Designed by Stephanie Forsythe and Todd MacAllen to enhance the versatility of softwall + softblock, molo's clipping system allows for the seamless attachment of lightweight materials such as paper, textiles, or foamboard.

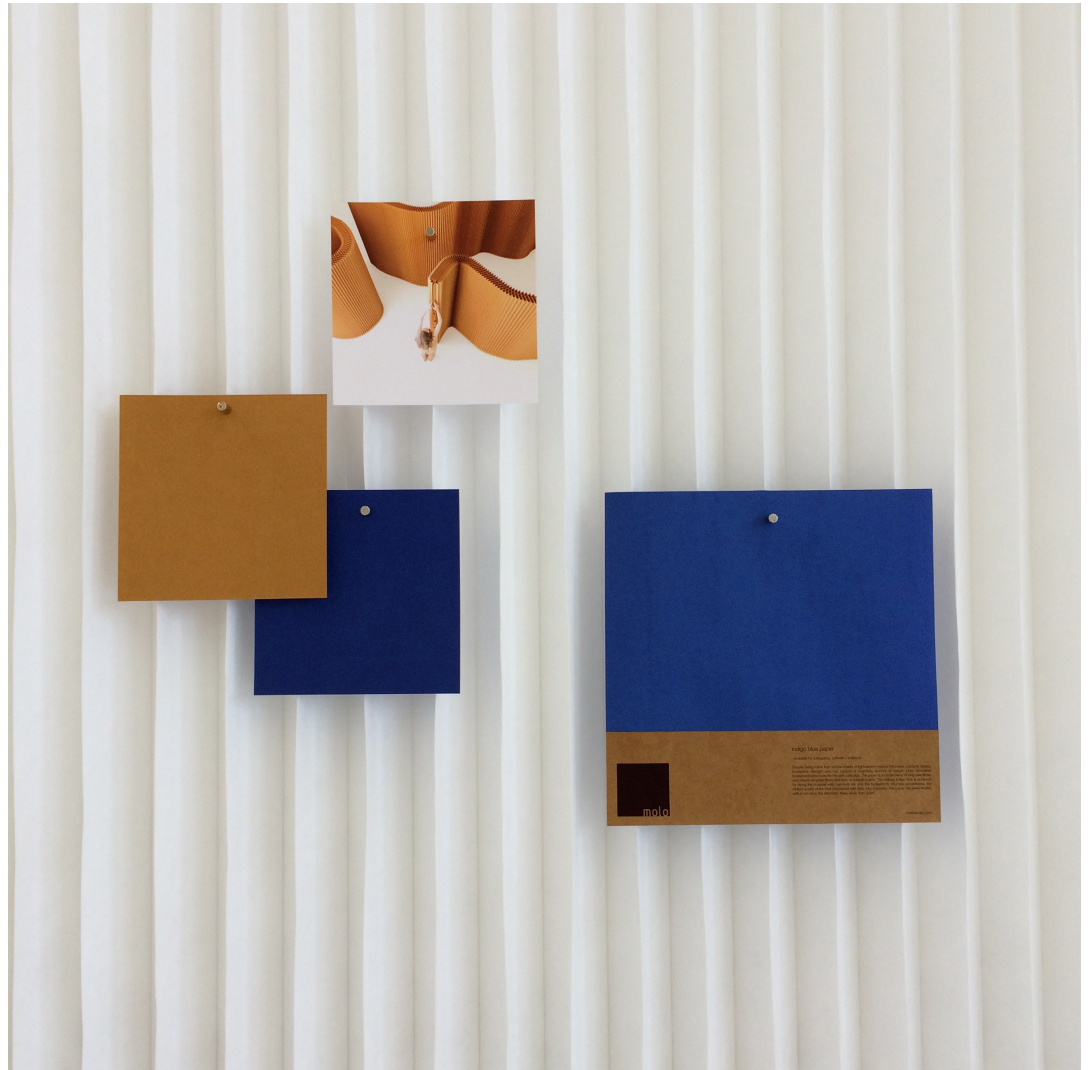
Using a combination of slim steel clips and rare earth magnets, the system transforms these flexible partitions into surfaces for display, signage, or collaborative ideation.



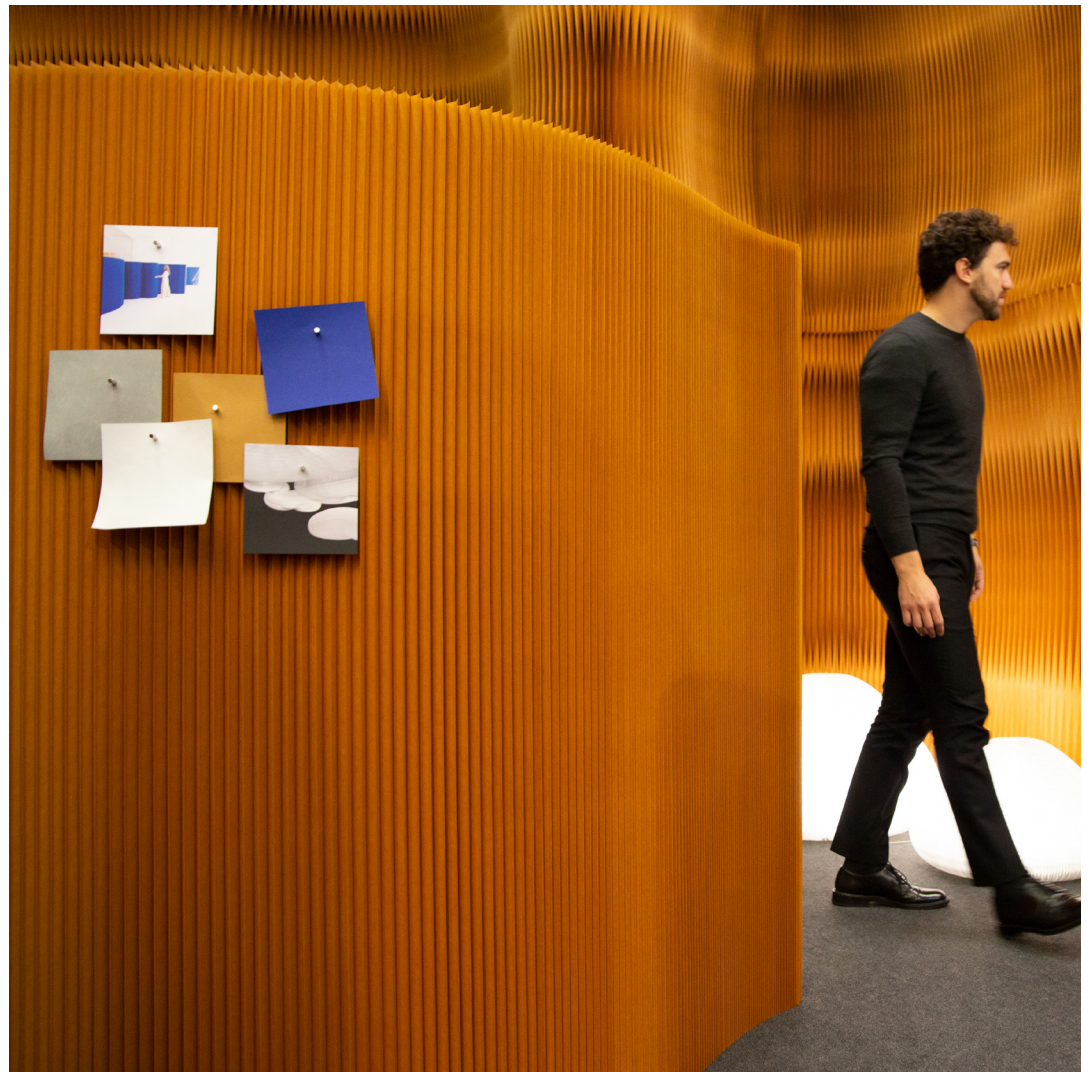
Simply attach a steel clip to a vertical fin of softwall, fold back or remove the wire handle, and place the material to be displayed in front of the clip, finally securing it with a magnet. Alternatively, magnets can be adhered directly to the back of the object.

Thin, powder-coated steel letters may also be affixed using this method, allowing for elegant, customizable communication. This clipping system preserves the tactile softness and movement of softwall + softblock while expanding their creative potential. This method is intended for lightweight items only.

clipping system can be used to display print material held into place with rare earth magnets.







Mounting magnets to the reverse of signage can hide the connection point and cleanly float materials on the vertical surface.



using softblock to display printed or laser-cut panel

Thin graphic panels, whether printed or laser-cut, can be mounted between layers of stacked softblock. The visible portion of the panel should match the height of the softblock, with an additional 150mm (6") left at both the top and bottom to create flaps for insertion. To install, simply slide these flaps between the layers. For LED illuminated textile softblocks, consider using a translucent material to allow light to pass through and enhance the visual effect.



Position the graphic panel either flush with the face of the softblock or slightly offset to create a floating effect. To install, gently grip the pleated fins of the softblock above (we find using knuckles works best) and hold them steady while guiding the panel into place with your other hand. Repeat this process with the softblock below to secure the panel evenly between the layers.

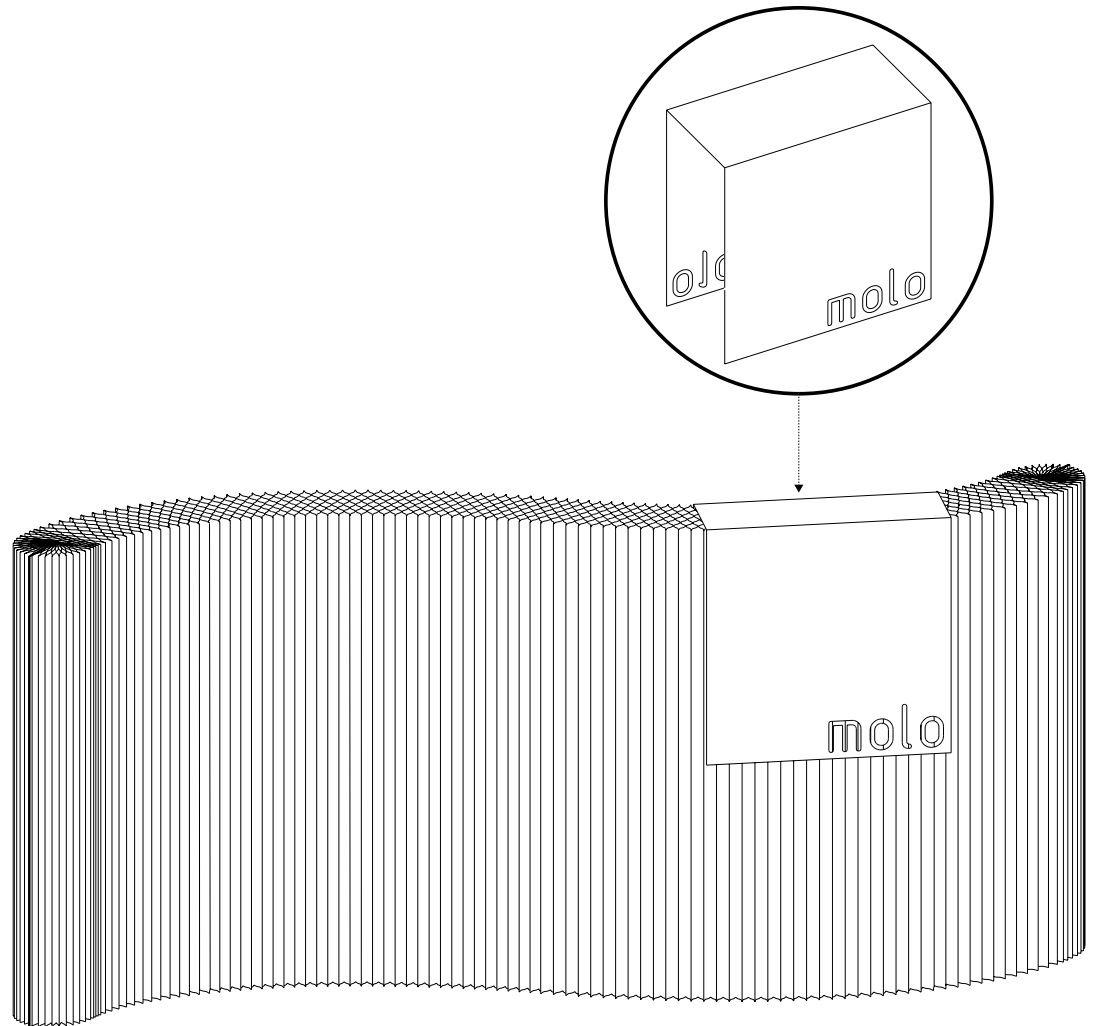


A laser-cut paper logo panel can be inserted between softblock layers to create a clean, monochromatic effect that rests flush against with the surface.

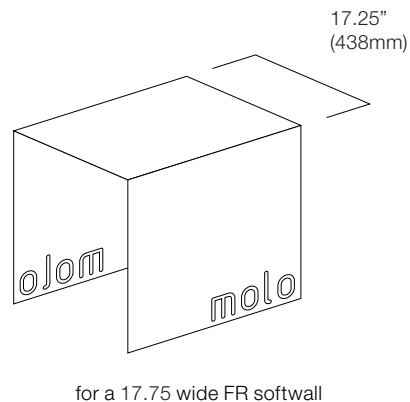
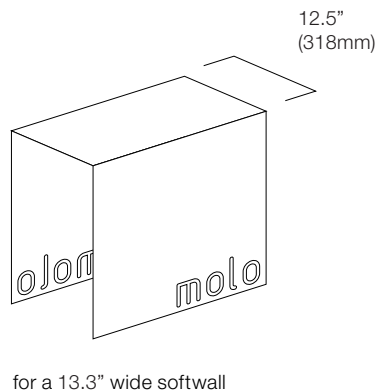
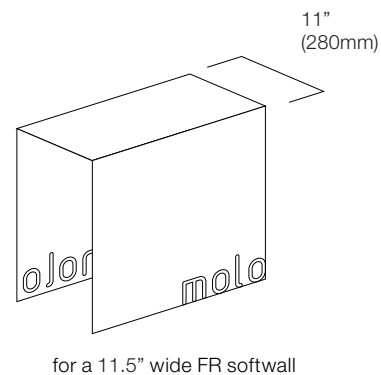
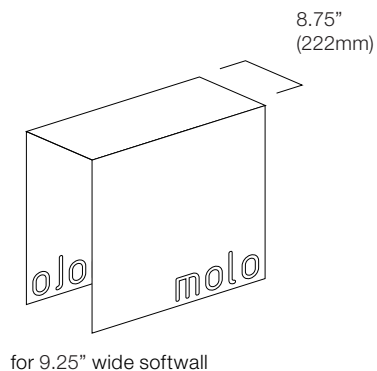


using softwall to display graphic panels

Graphic panels can be added to softwall using a U-shape or 'saddle' design that slides over the top wall. This form can be made by folding a lightweight material, which is then reinforced with three panels of sturdier cardstock or foamcore to create a rigid shape. For a more robust version, materials such as MDF, plywood or Corian may be used. To ensure proper stability and support, please consult our softwall + softblock weight-bearing capacity guidelines.



As softwall expands, its honeycomb structure causes the overall width to decrease. To ensure a proper fit, make sure the top panel of the saddle sign is narrower than the specified width of the softwall.



Laser-cut textile saddle-sign
being installed over softwall.





Komatex hanging banner on a
244 cm (8 ft) tall softwall.



using the horizontal edges
of softblock

Foamcore letters resting
gently on the ledge of
softblock.



notch cut displays in softwall

Custom cuts act as both practical display and sculptural form, revealing the airy structure of the internal honeycomb.





PaperStone® letters
attached to softwall +
softblock with integrated
magnet backing and metal
clips.



Notch cuts are a bespoke option available by request, and are possible with both paper and textile softwall.





logo with softwall backdrop



A CNC-cut metal molo logo is positioned between stacked softblock layers, creating a clean, integrated detail.





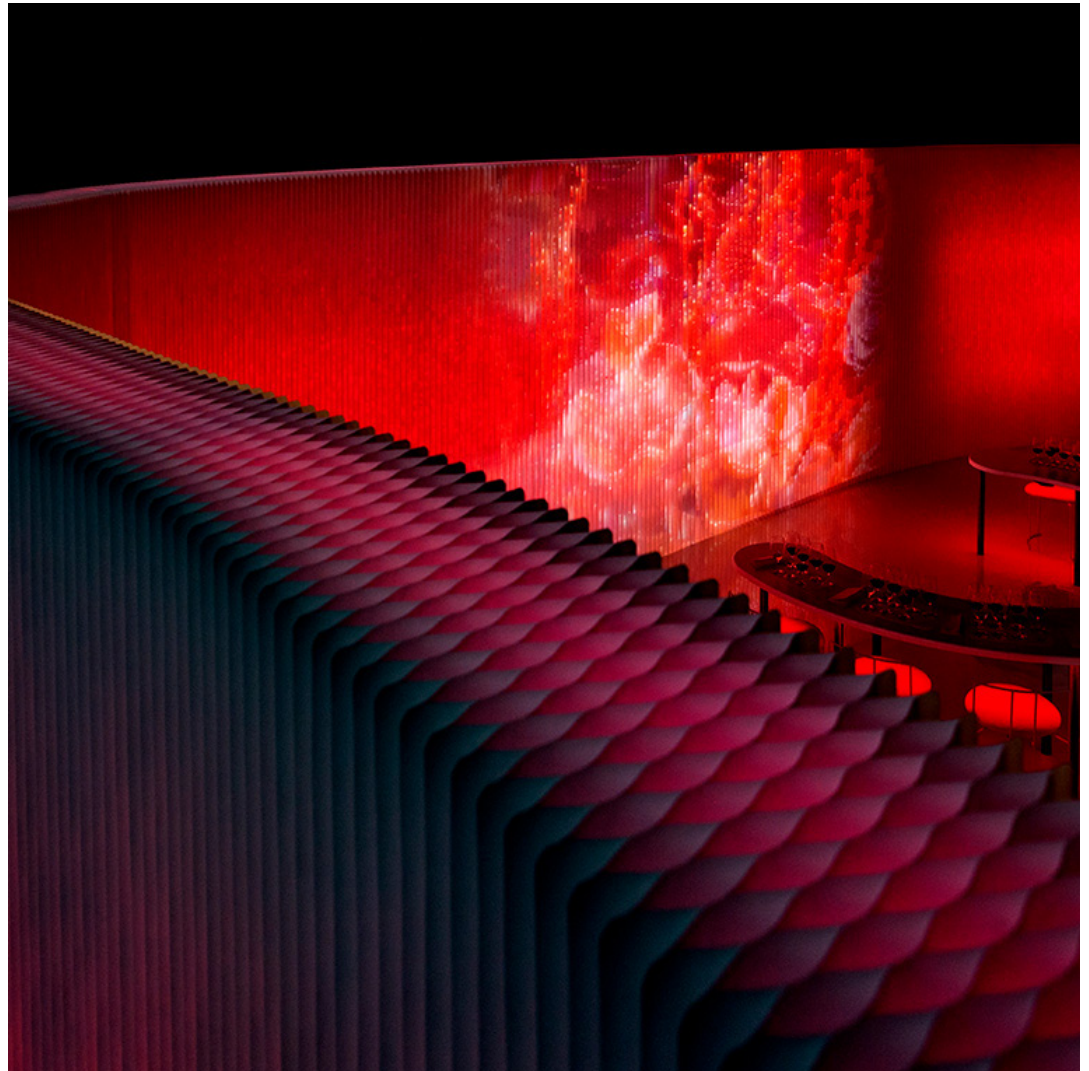
backdrop for projections

white textile softwall,
illuminated from within
by RGB LEDs, becomes
a textured canvas for
projected video and stills.



The vertical pleats abstract projections, offering new possibilities for atmospheric displays and immersive experiences.





Images and motion

Graphics can be projected onto softwall + softblock, softseating or cloud softlight, transforming each surface into an animated display.





Projections are an effective way to temporarily add logos or branding to softwall + softblock.

Project by Slide Productions, a molo Official Dealer in Australia.



softwall + softblock are often used for set design and performance backdrops. Lighting designers regularly find exciting ways to bring the elements to life with colour, light and projections.

