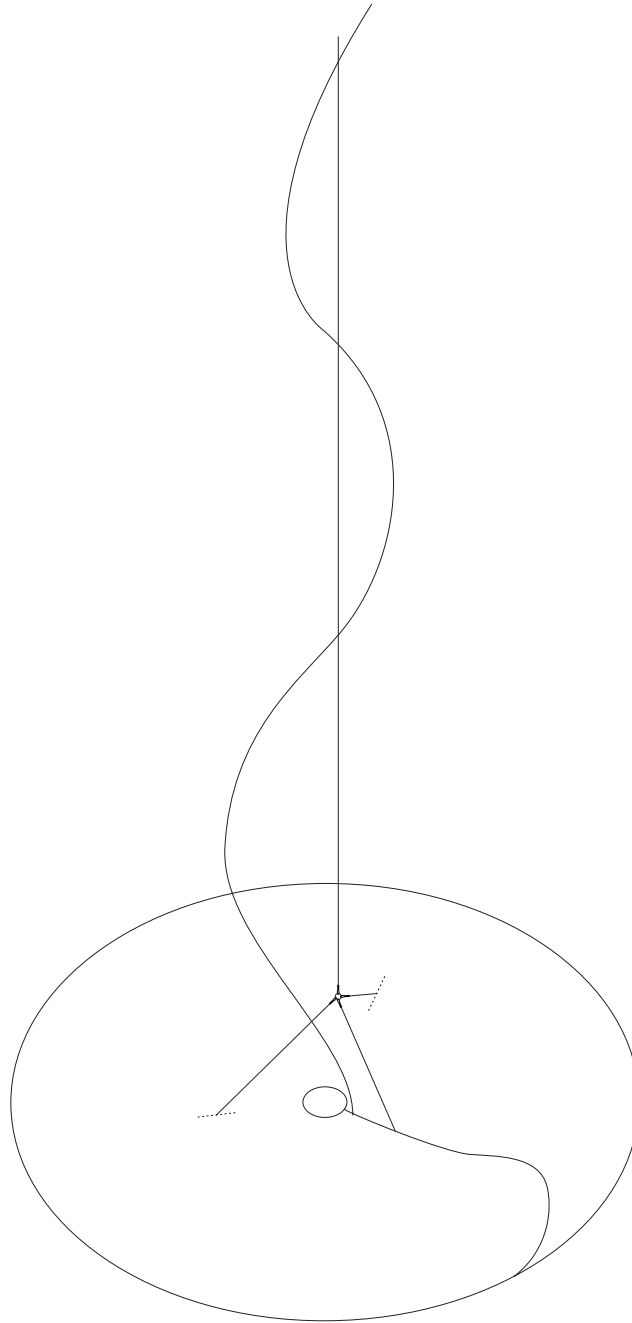
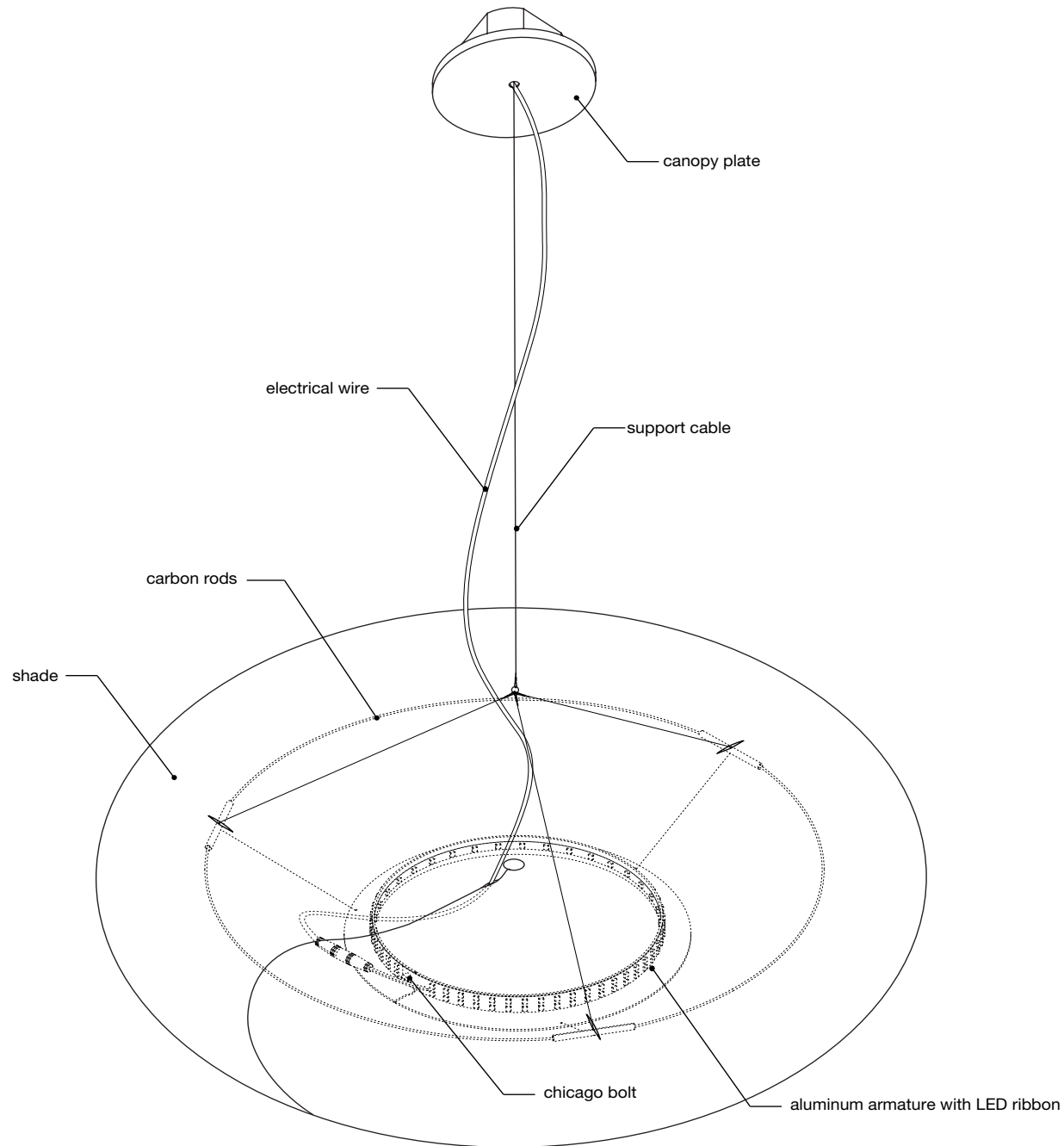


cloud softlight pendant · ETL installation guide

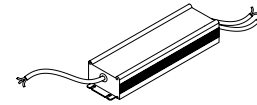
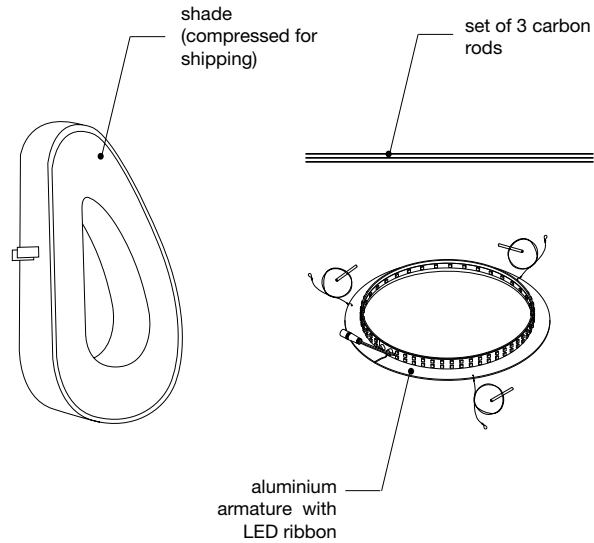


molo

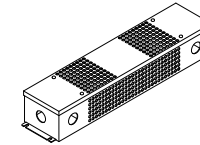
cloud pendant anatomy



cloud pendant parts



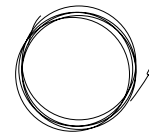
dimmable
hardwire
LED driver



white junction
box enclosure
for driver



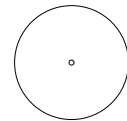
3.5m
electrical wire



4m
support cable



bracket bar
with cable
gripper and
magnets



white canopy
plate

- **dimmable hardwire LED driver:** Power output of driver varies with cloud size, as shown below. Mount driver in accessible dry location on wall or ceiling surface. Specifications available upon request. Dimmable to 10% with standard 0-10V and 1-10V dimming systems. Dimmer with integral power switch required to turn lights off.

- **small cloud pendant:**

40W driver

- **medium cloud pendant:**

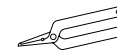
40W driver

- **large cloud pendant:**

60W driver

- **x-large cloud pendant:**

60W driver



split ring
pliers



x7
lever-lock
connectors



x3
clamps

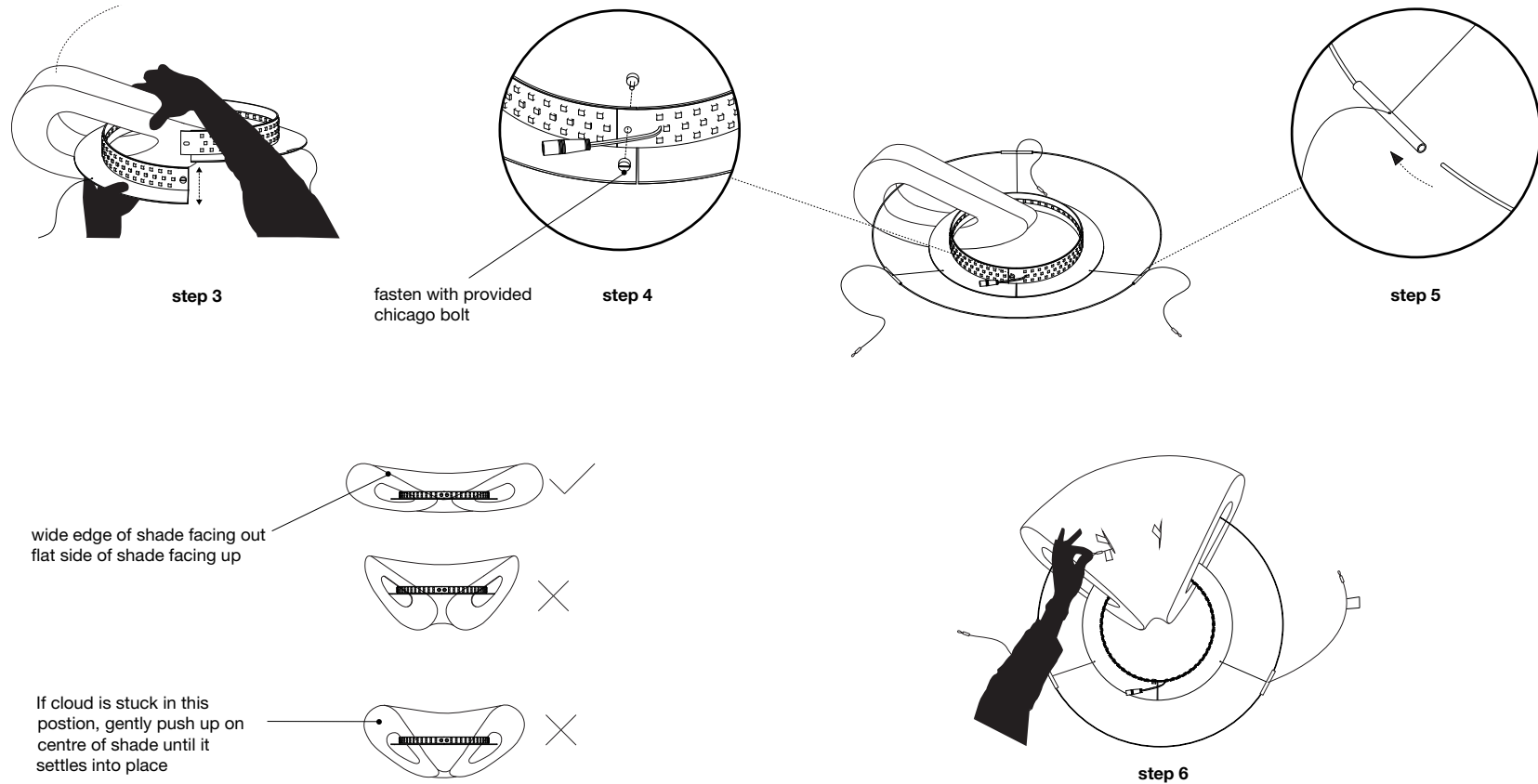


gripper ring
(optional alternative
to canopy plate and
bracket bar gripper)



cable tie

cloud pendant assembly



step 1: Review [cloud pendant instructional video](http://www.molodesign.com/instructional-video-cloud-pendant) (www.molodesign.com/instructional-video-cloud-pendant)

step 2: Stretch cloud shade carefully, as shown in video linked above.

step 3: Undo the chicago bolt and split the angle ring LED armature by pulling the open ends of the ring apart vertically. Thread the armature through the cloud shade with the horizontal flange facing down. Make sure the flat side of the shade is facing up and the wider end of the shade is facing outwards.

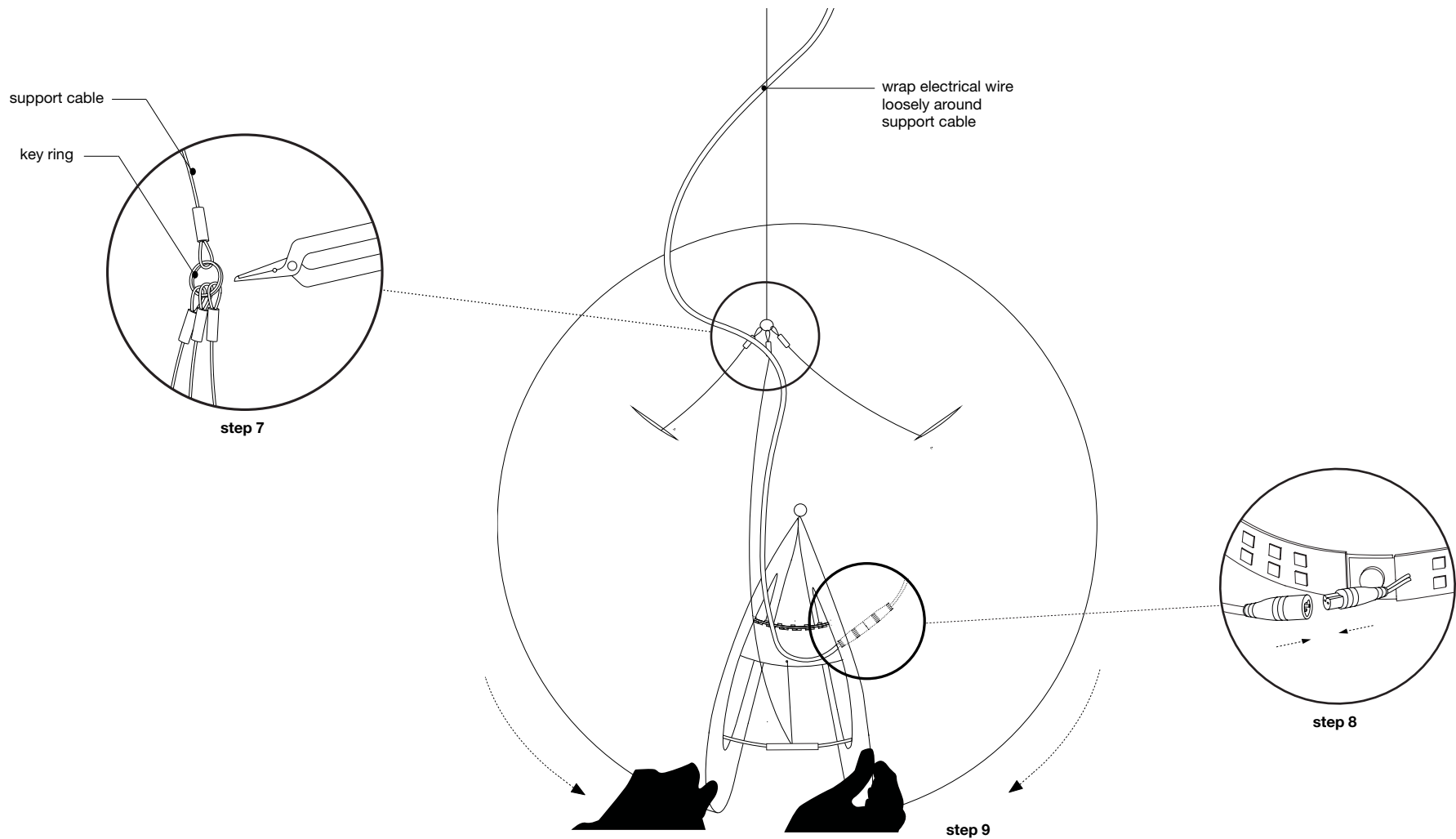
IMPORTANT: If this step is not done correctly the cloud will look “droopy” when installed. The cloud should sit relatively flat and undulate gently when installed correctly.

step 4: Close armature ring and fasten through hole in LED ribbons and aluminium ring using provided chicago bolt.

step 5: Complete the outer ring of the armature by inserting the white painted carbon rods into the aluminum tube connectors (fixed to cables). The rods will flex to create a circle inside the cavity of the shade.

step 6: Feed two of the three support cables through the larger cells of the shade. Make sure the red tagged wire passes through the red tagged cell and the blue tagged wire passes through the blue tagged cell . **Remove tags.**

cloud pendant assembly

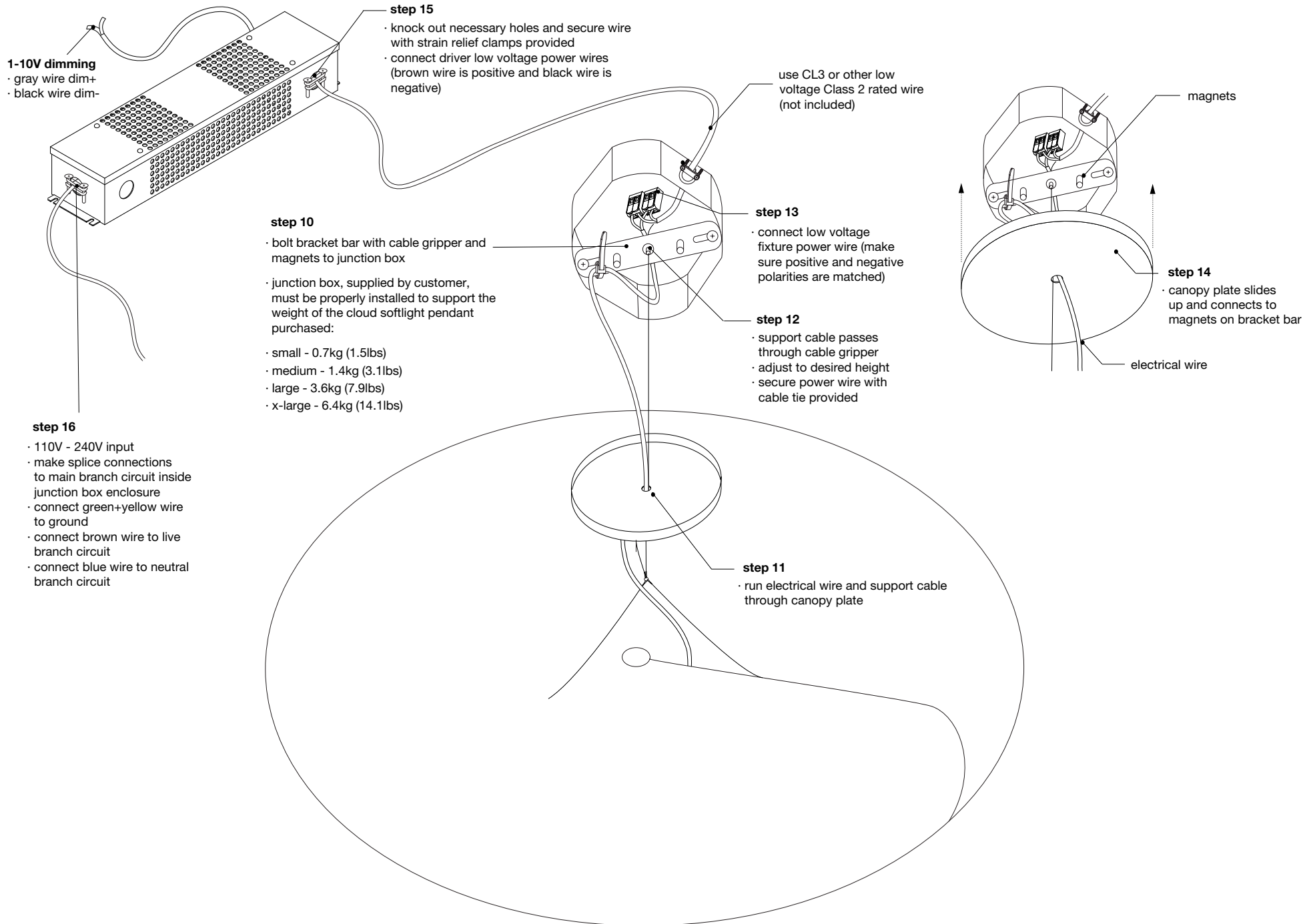


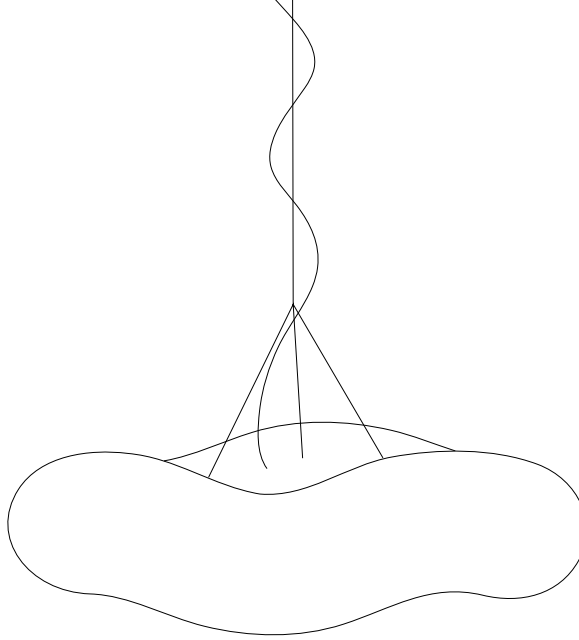
step 7: Use split ring pliers to open the key ring attached to main support cable and attach the three support cables from cloud pendant armature.

step 8: Connect electrical wire to LED ribbon inside shade (be sure to line up matching groove in male and female ends of clear connectors).

step 9: Close the shade around the armature by grabbing 20+ layers of the outer fins and pulling the magnetic end panels around the ring until they connect together. The third steel support cable and electrical wire should be sandwiched between the two closed magnetic end panels.

cloud pendant installation





Designed by Stephanie Forsythe and Todd MacAllen, manufactured by molo and protected by one or more patents and/or design registrations held by molo, viewable at molodesign.com/ip

