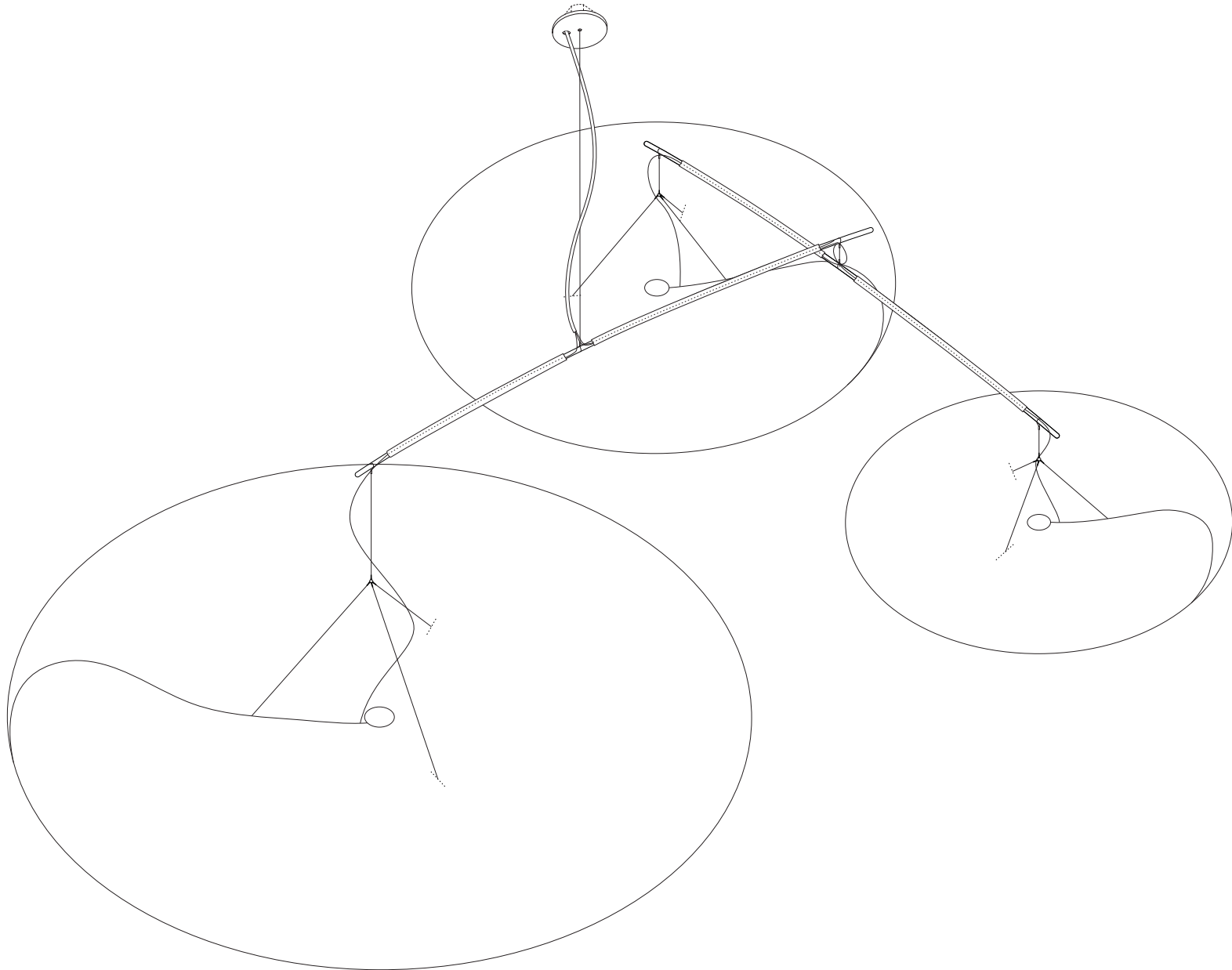
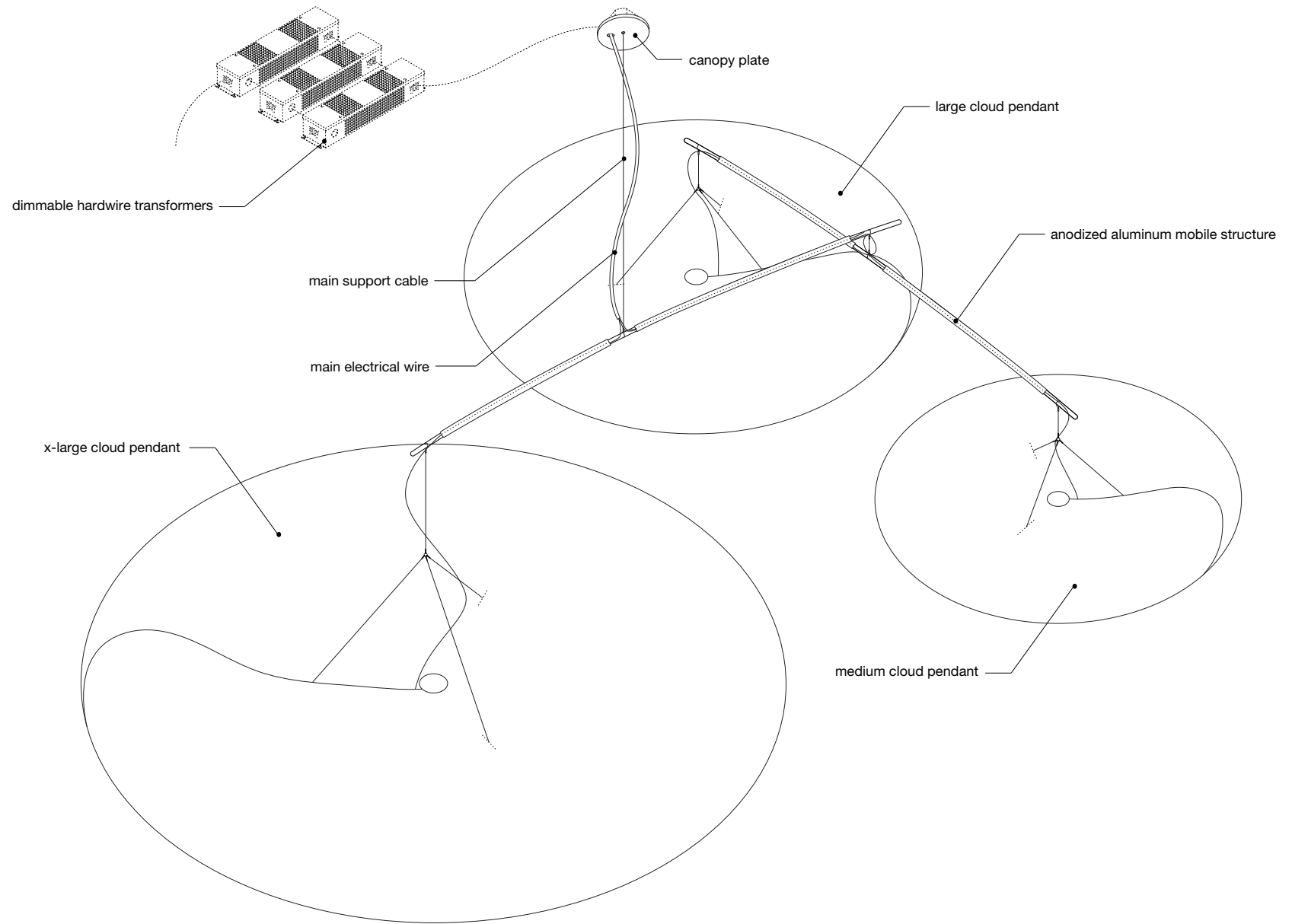


# cloud softlight large mobile · ETL installation guide

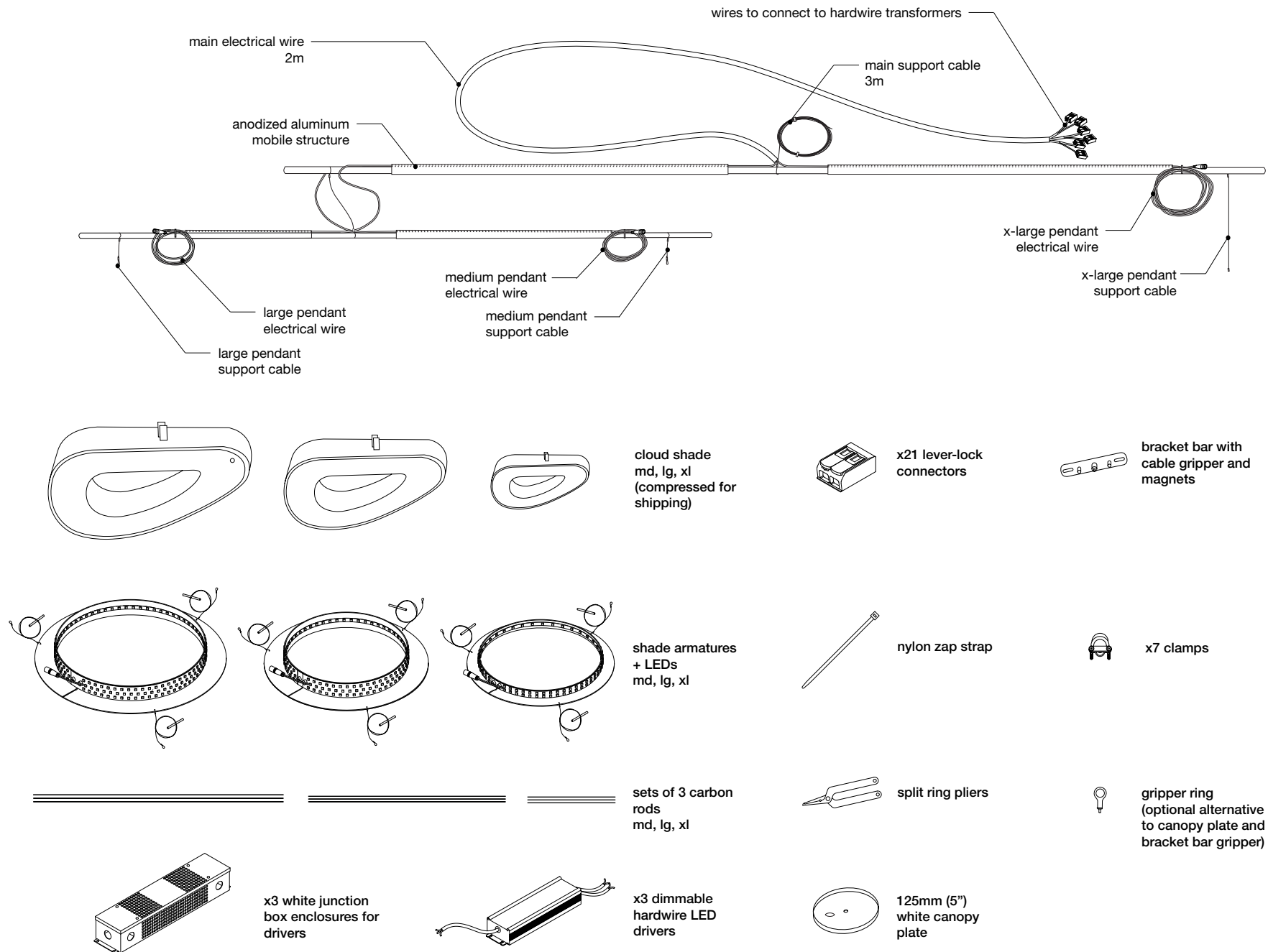


# moloo

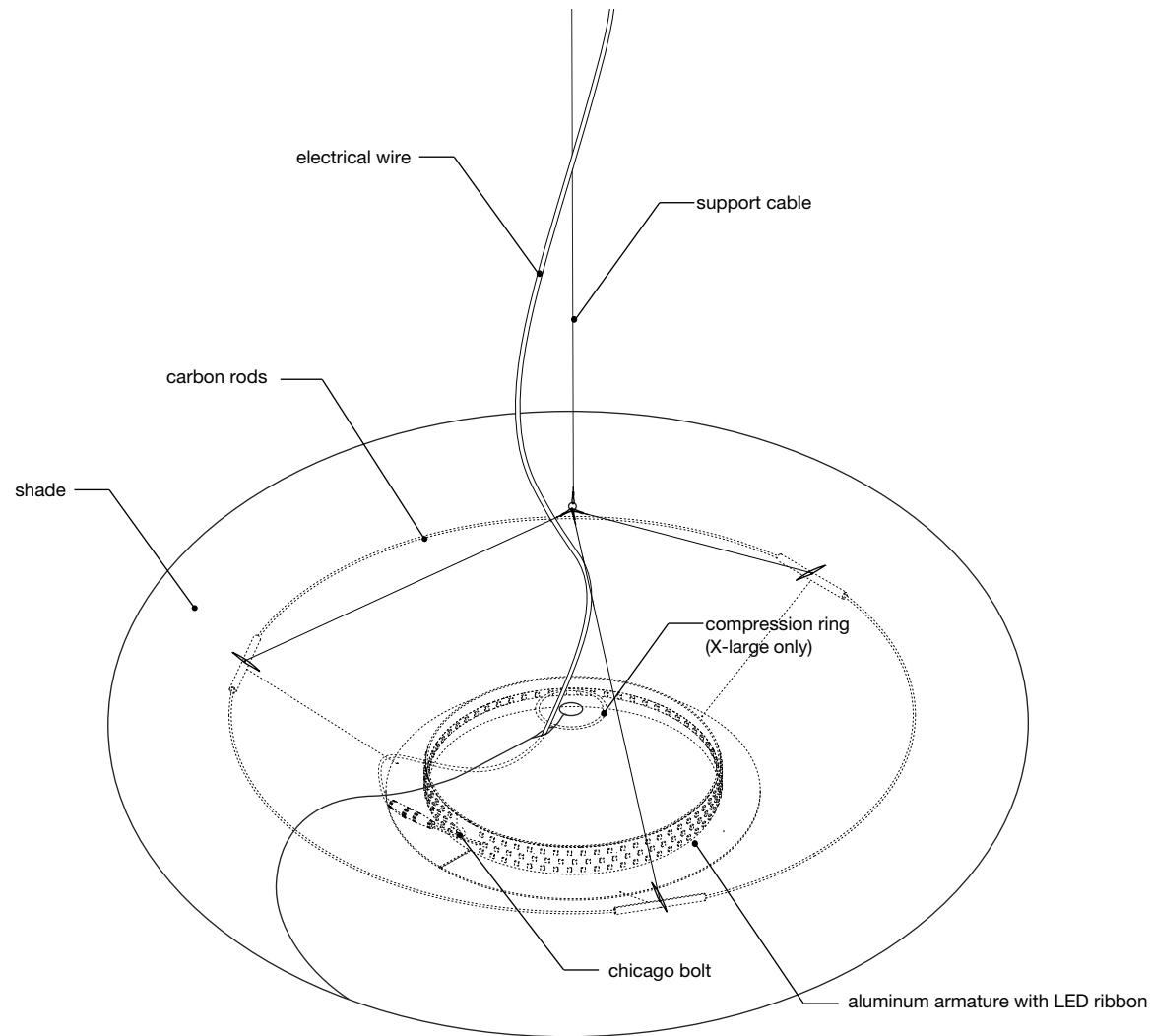
# large cloud mobile anatomy



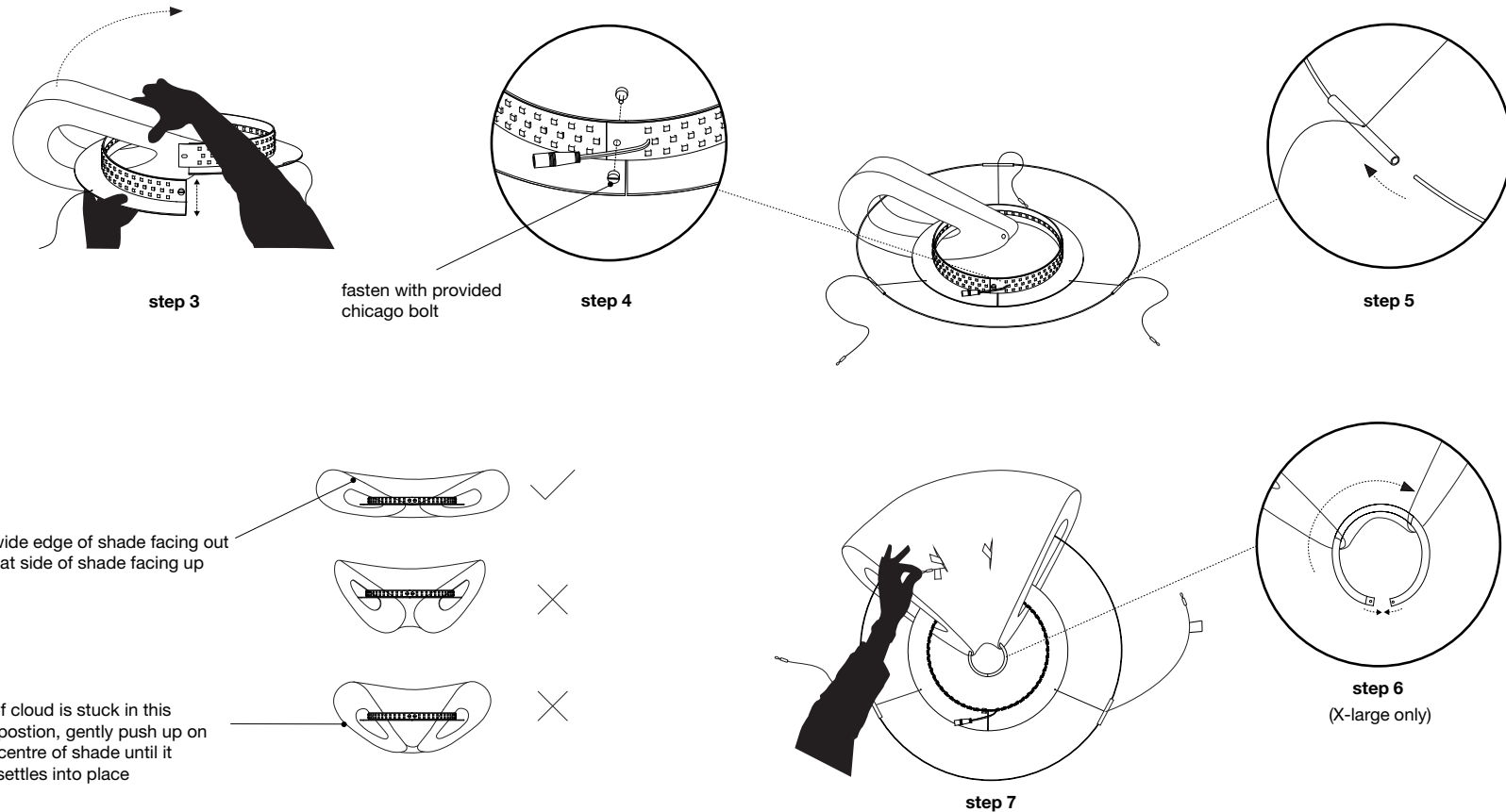
# large cloud mobile parts



# anatomy of cloud pendant within mobile



# cloud pendant assembly



**step 1:** Review [x-large cloud pendant instructional video](http://www.molodesign.com/instructional-video-cloud-pendant-xlarge) ([www.molodesign.com/instructional-video-cloud-pendant-xlarge](http://www.molodesign.com/instructional-video-cloud-pendant-xlarge))

**step 2:** Stretch cloud shade carefully, as shown in video linked above.

**step 3:** Undo the chicago bolt and split the angle ring LED armature by pulling the open ends of the ring apart vertically. Thread the armature through the cloud shade with the horizontal flange facing down. Make sure the flat side of the shade is facing up and the wider end of the shade is facing outwards.

**IMPORTANT:** If this step is not done correctly the cloud will look “droopy” when installed. The cloud should sit relatively flat and undulate gently when installed correctly.

**step 4:** Close armature ring and fasten through hole in LED ribbon and aluminium ring using provided chicago bolt.

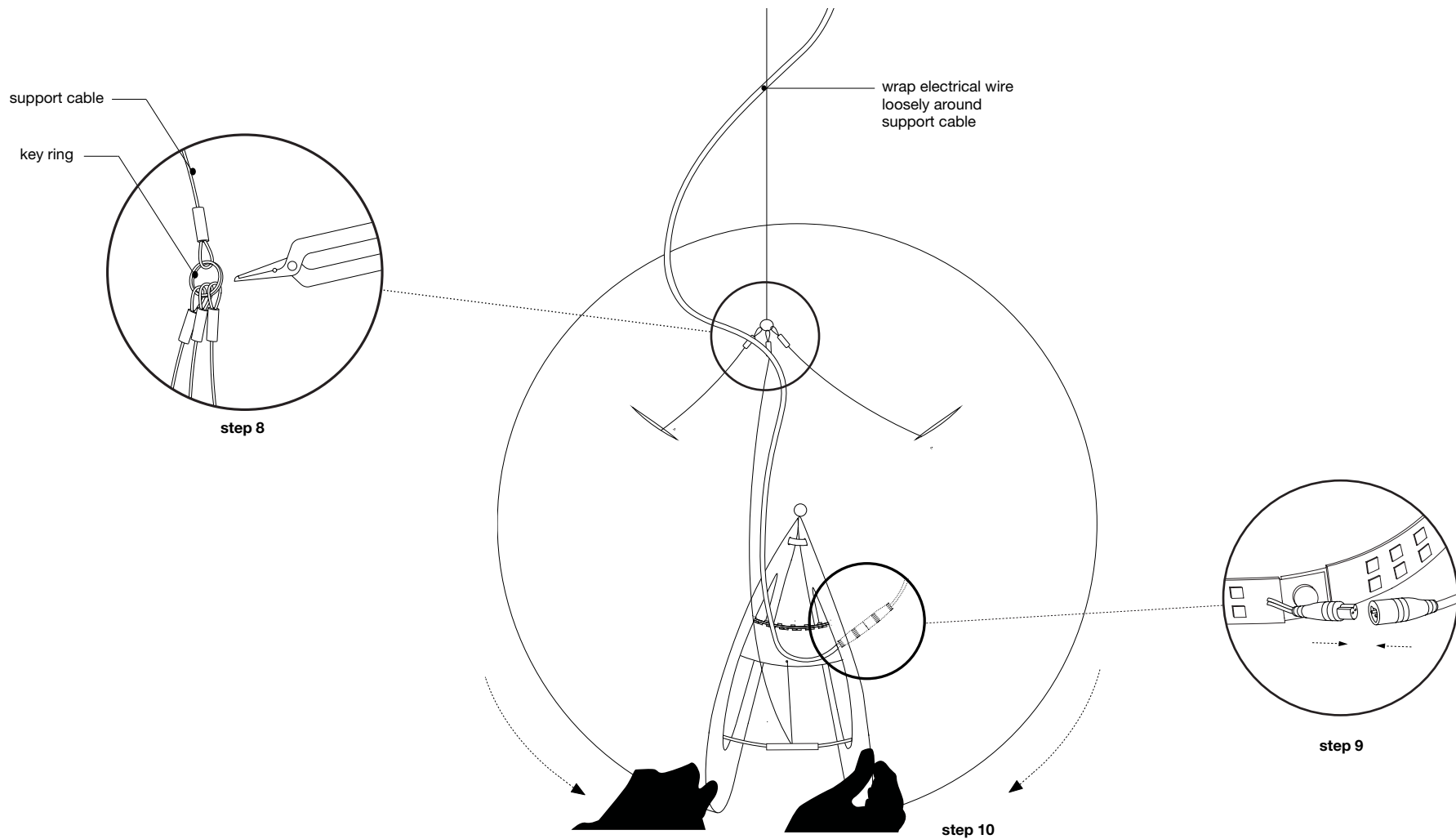
**step 5:** Complete the outer ring of the armature by inserting the white painted carbon rods into the aluminum tube connectors (fixed to cables). The rods will flex to create a circle inside the cavity of the shade.

**step 6:** Spread open cloud shade slightly and thread clear compression ring through hole in narrow end of shade (X-large only). Snap closed.

**IMPORTANT:** Do not attempt to compress the shade once the compression ring is installed. Doing so will damage the shade.

**step 75:** Feed two of the three support cables through the larger cells of the shade. Make sure the red tagged wire passes through the red tagged cell and the blue tagged wire passes through the blue tagged cell. **Remove tags.**

# cloud pendant assembly



**step 8:** Use split ring pliers to open the key ring attached to main support cable and attach the three support cables from cloud pendant.

**step 9:** Wrap electrical wire loosely around support cable and then connect it to LED ribbon inside shade (be sure to line up matching groove in male and female ends of clear connectors).

**step 10:** Close the shade around the armature by grabbing 20+ layers of the outer fins and pulling the magnetic end panels around the ring until they connect together. The third steel support cable and electrical wire should be sandwiched between the two closed magnetic end panels.

# large cloud mobile installation

## step 11

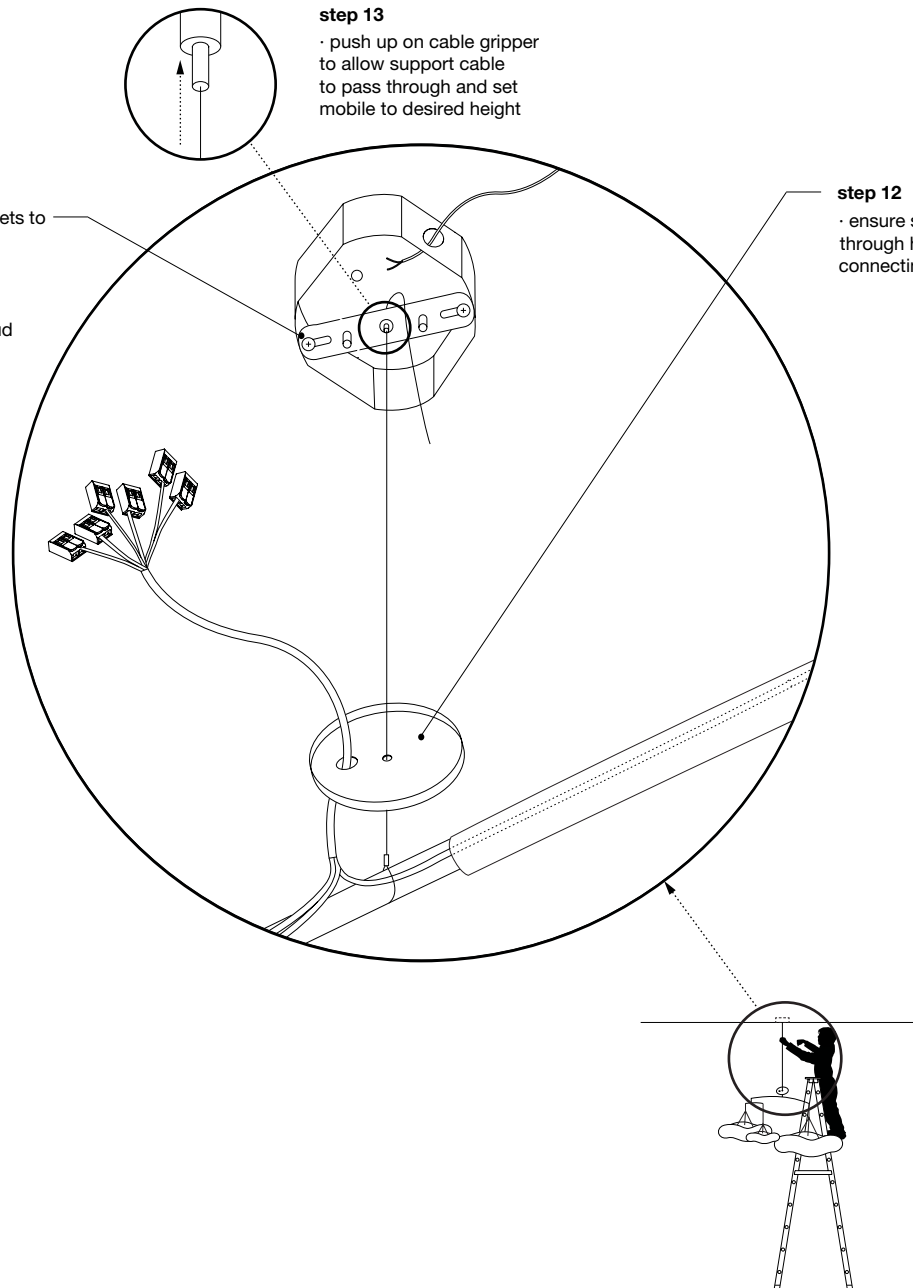
- bolt bracket bar with cable gripper and magnets to junction box
- junction box, supplied by customer, must be properly installed to support the weight of cloud softlight purchased
- large mobile - 12kg (26.5lbs)

## step 13

- push up on cable gripper to allow support cable to pass through and set mobile to desired height

## step 12

- ensure support cable + electrical wire pass through holes in canopy plate prior to connecting support cable to cable gripper



# large cloud mobile installation

## troubleshooting

- transformer and cloud electrical wires have positive and negative polarities, if cloud is not illuminating check that wire polarities are properly matched

CL2 wire  
(not included)

## step 12

- mount transformers in provided enclosures on an indoor wall or ceiling
- connect driver low voltage power wires inside enclosures (brown wire is positive and black wire is negative)
- if additional wire is required to run from junction box to transformer, use CL2 or CL3 rated wire (not included)

## 1-10V dimming

- gray wire dim+
- black wire dim-

use provided clamps  
to secure all wires

## step 13

- make splice connections to main branch circuit inside junction box enclosure in accordance to CEC and NEC regulations
- connect green+yellow wire to ground
- connect brown wire to live branch circuit
- connect blue wire to neutral branch circuit

## step 14

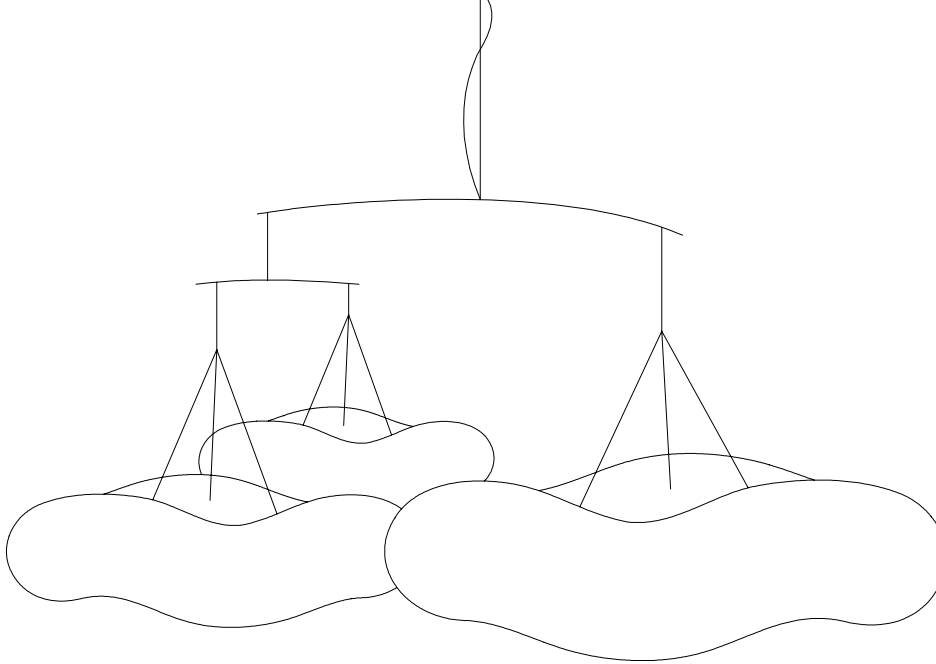
- canopy plate slides up and connects to magnets on bracket bar

zap strap power wire to  
bracket bar

## step 15

- if mobile is unbalanced, adjust balance by moving pendant support cables along notches in aluminum bars of mobile armature





Designed by Stephanie Forsythe and Todd MacAllen, manufactured by molo and protected by one or more patents and/or design registrations held by molo, viewable at [molodesign.com/ip](http://molodesign.com/ip)

