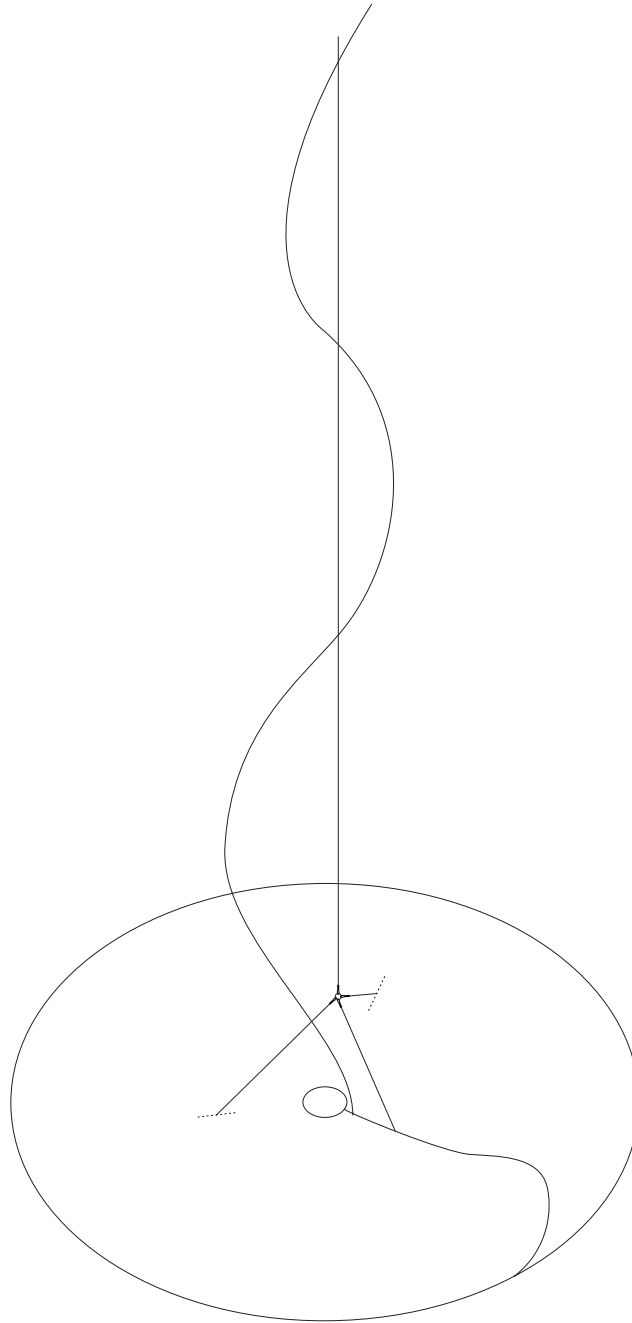
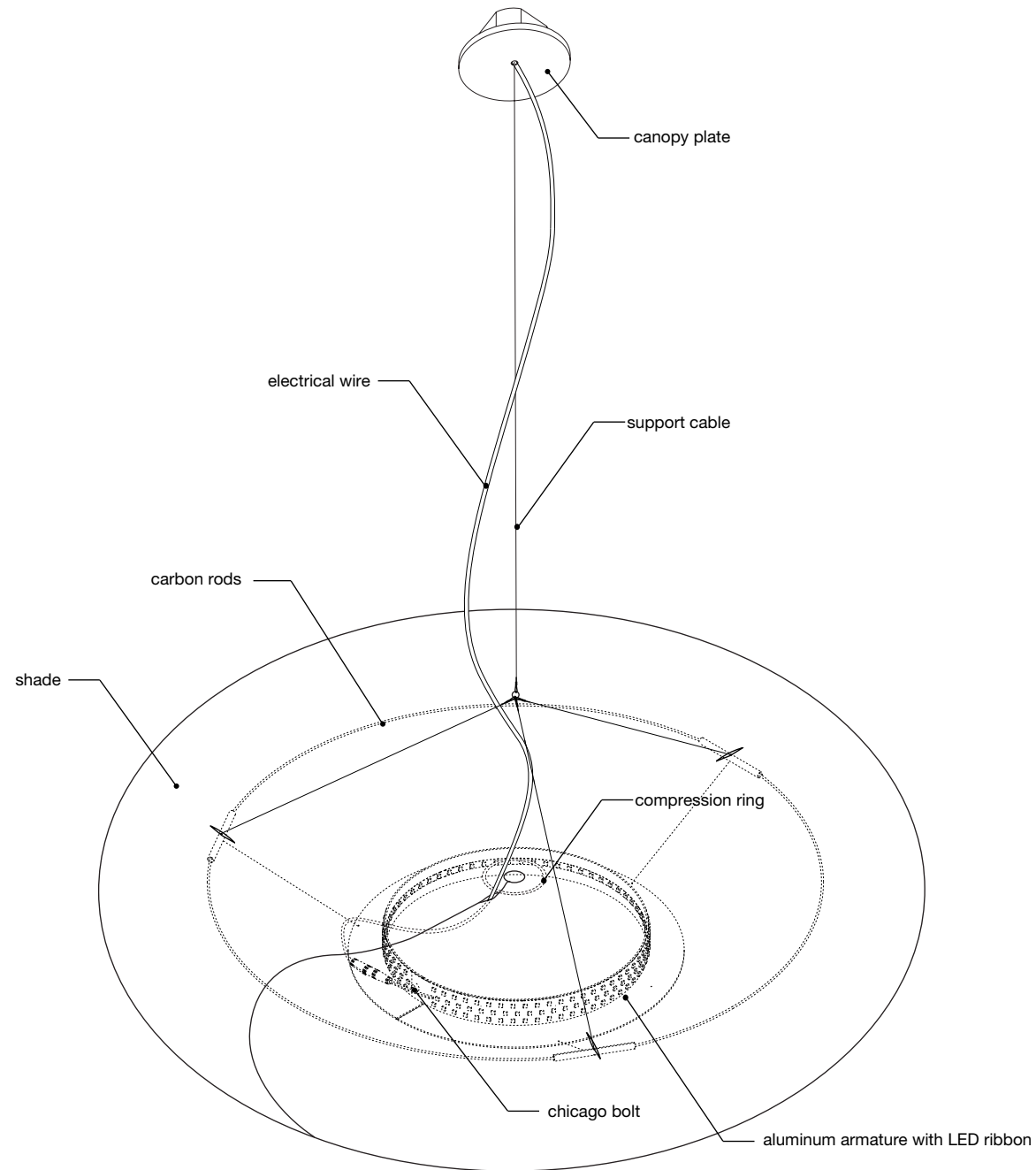


x-large cloud softlight pendant · installation guide

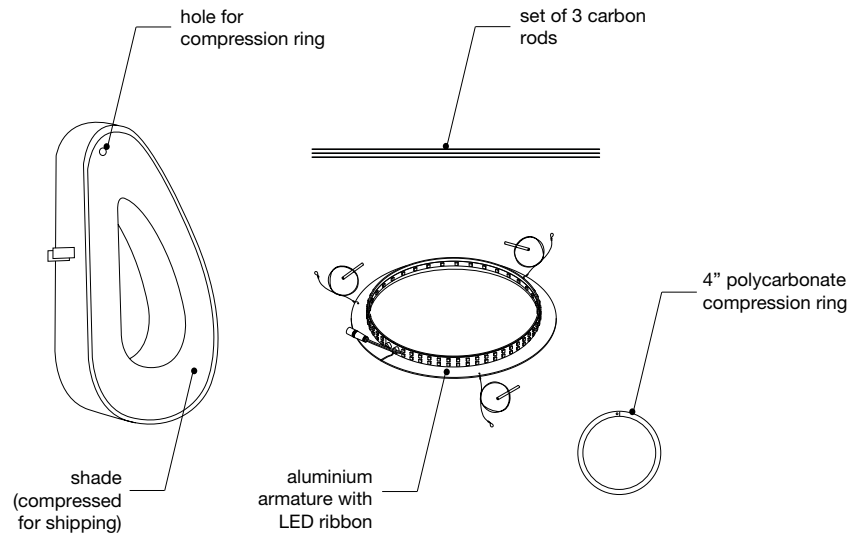


molo

x-large cloud pendant anatomy



x-large cloud pendant parts



- **dimmable hardwire LED driver:** Power output of driver varies with cloud size, as shown below. Mount driver in accessible dry location on wall or ceiling surface. Specifications available upon request. Dimmable to 10% with standard 0-10V and 1-10V dimming systems. Dimmer with integral power switch required to turn lights off.

- **small cloud pendant:**

40W driver

- **medium cloud pendant:**

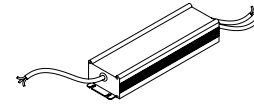
40W driver

- **large cloud pendant:**

60W driver

- **x-large cloud pendant:**

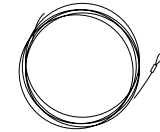
60W driver



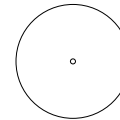
dimmable
hardwire
LED driver



3.5m
electrical wire



4m
support cable



white canopy
plate



bracket bar
with cable
gripper and
magnets



split ring
pliers

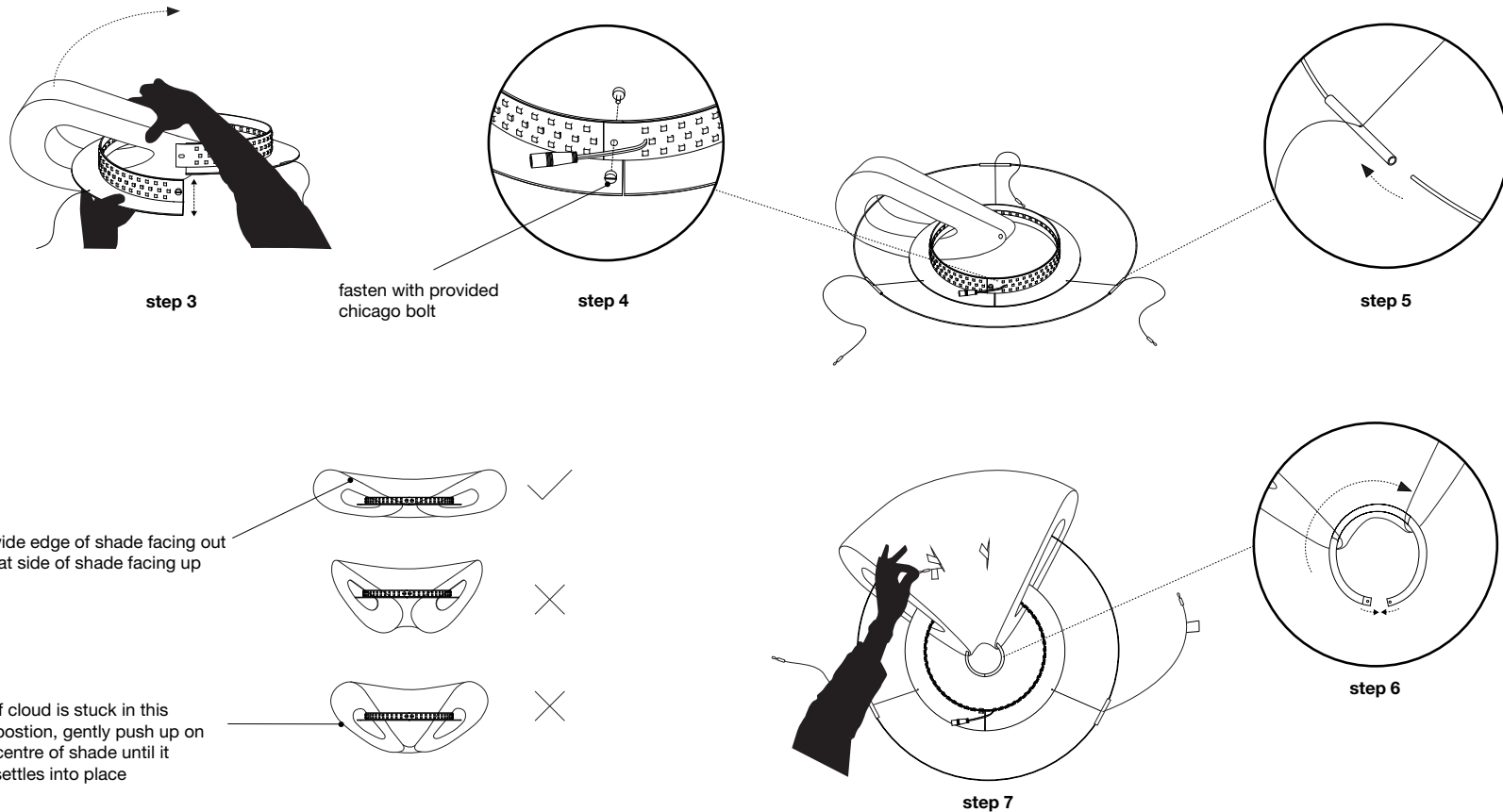


x2 lever-lock
connectors



gripper ring
(optional alternative
to canopy plate and
bracket bar gripper)

x-large cloud pendant assembly



step 1: Review [x-large cloud pendant instructional video](http://www.molodesign.com/instructional-video-cloud-pendant-xlarge) (www.molodesign.com/instructional-video-cloud-pendant-xlarge)

step 2: Stretch cloud shade carefully, as shown in video linked above.

step 3: Undo the chicago bolt and split the angle ring LED armature by pulling the open ends of the ring apart vertically. Thread the armature through the cloud shade with the horizontal flange facing down. Make sure the flat side of the shade is facing up and the wider end of the shade is facing outwards.

IMPORTANT: If this step is not done correctly the cloud will look “droopy” when installed. The cloud should sit relatively flat and undulate gently when installed correctly.

step 4: Close armature ring and fasten through hole in LED ribbon and aluminium ring using provided chicago bolt.

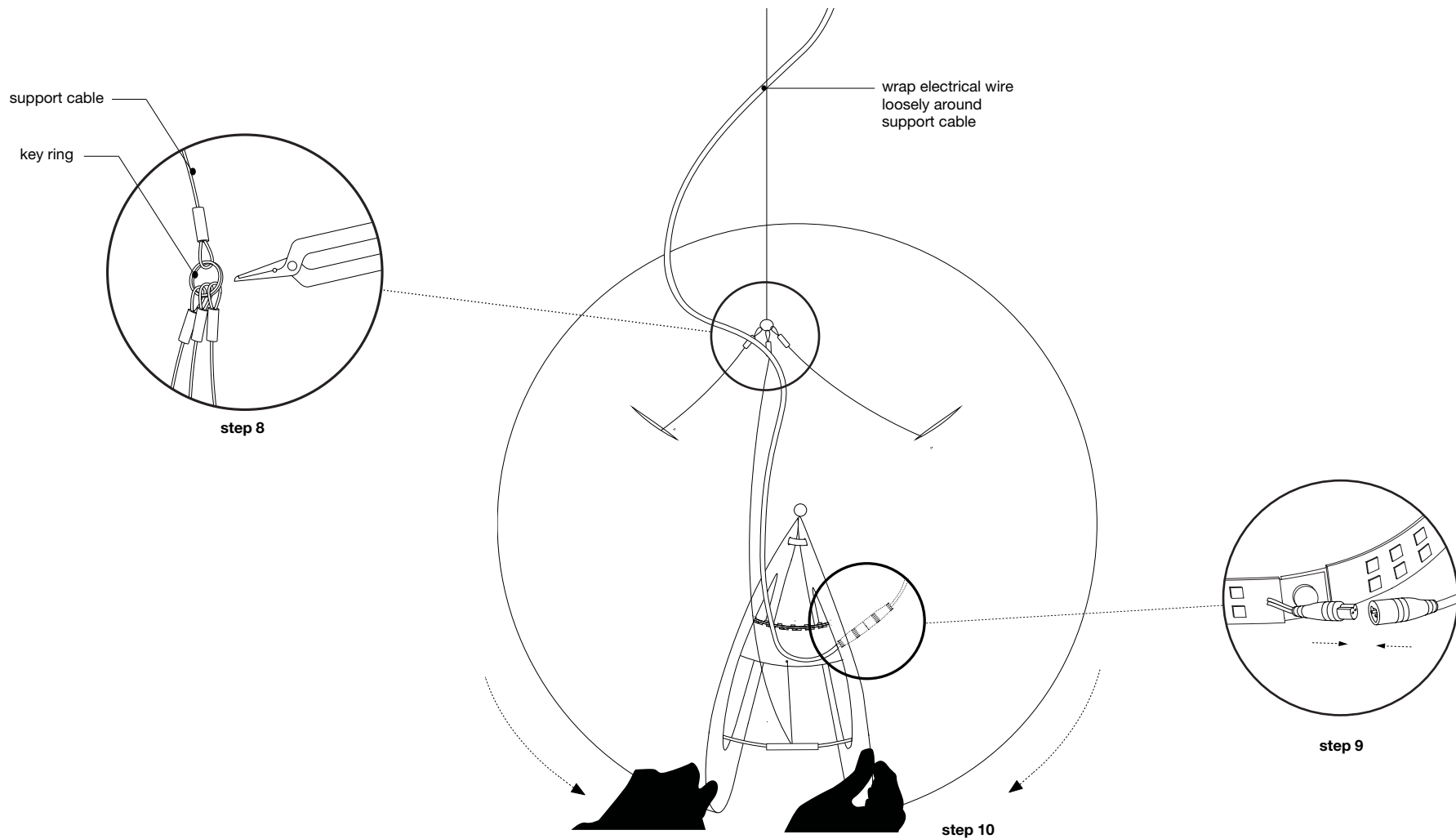
step 5: Complete the outer ring of the armature by inserting the white painted carbon rods into the aluminum tube connectors (fixed to cables). The rods will flex to create a circle inside the cavity of the shade.

step 6: Spread open cloud shade slightly and thread clear compression ring through hole in narrow end of shade. Snap closed.

IMPORTANT: Do not attempt to compress the shade once the compression ring is installed. Doing so will damage the shade.

step 7: Feed two of the three support cables through the larger cells of the shade, ensuring the coloured tags match. Remove tags.

x-large cloud pendant assembly

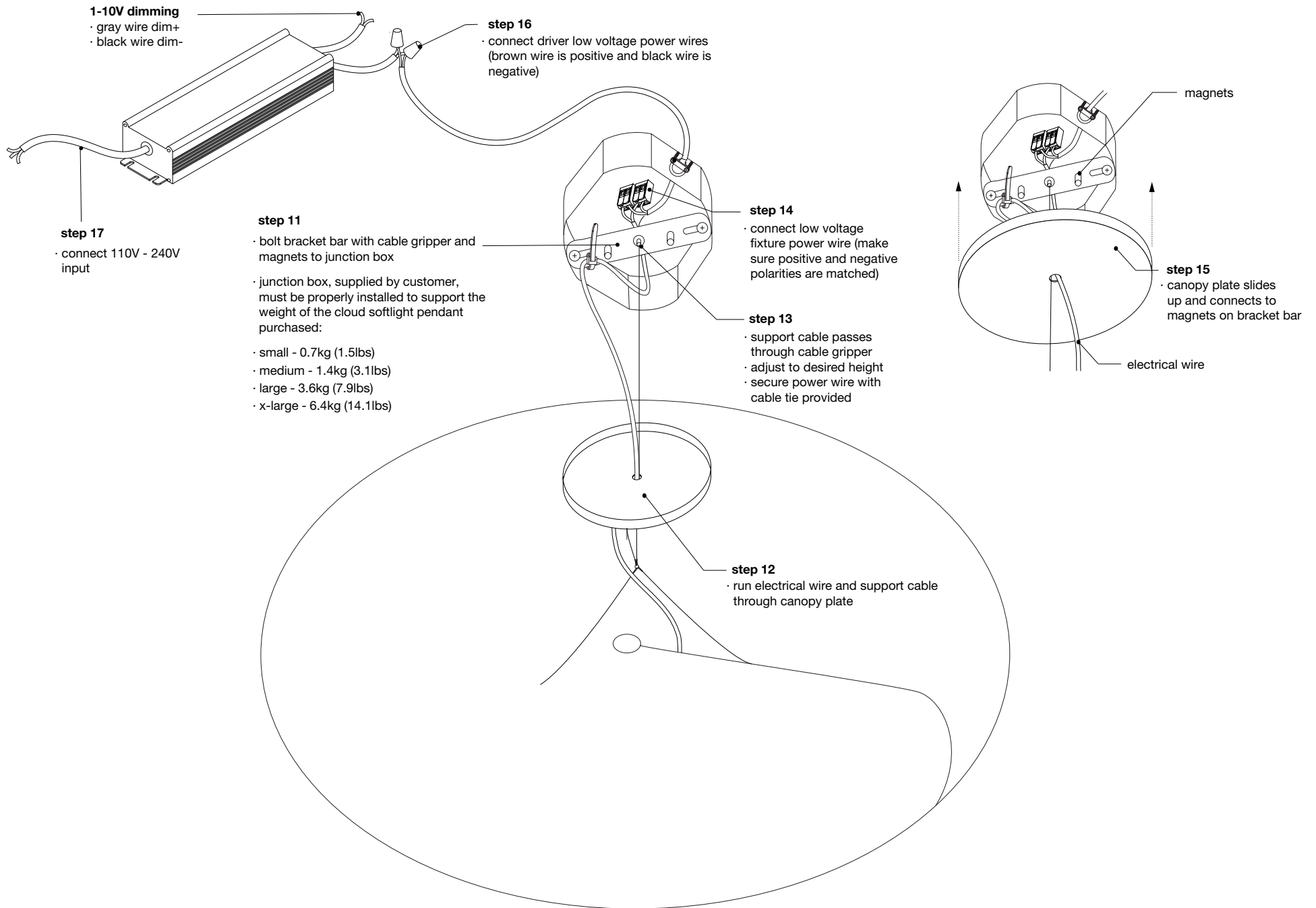


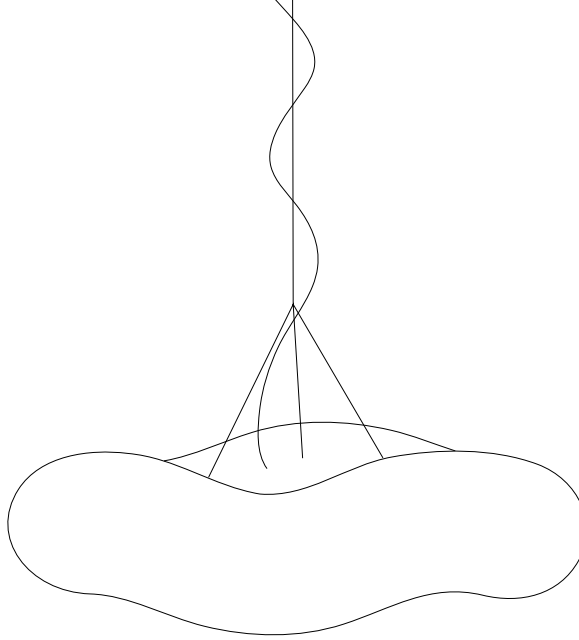
step 8: Use split ring pliers to open the key ring attached to main support cable and attach the three support cables from cloud pendant.

step 9: Wrap electrical wire loosely around support cable and then connect it to LED ribbon inside shade (be sure to line up matching groove in male and female ends of clear connectors).

step 10: Close the shade around the armature by grabbing 20+ layers of the outer fins and pulling the magnetic end panels around the ring until they connect together. The third steel support cable and electrical wire should be sandwiched between the two closed magnetic end panels.

cloud pendant installation





Designed by Stephanie Forsythe and Todd MacAllen, manufactured by molo and protected by one or more patents and/or design registrations held by molo, viewable at molodesign.com/ip

