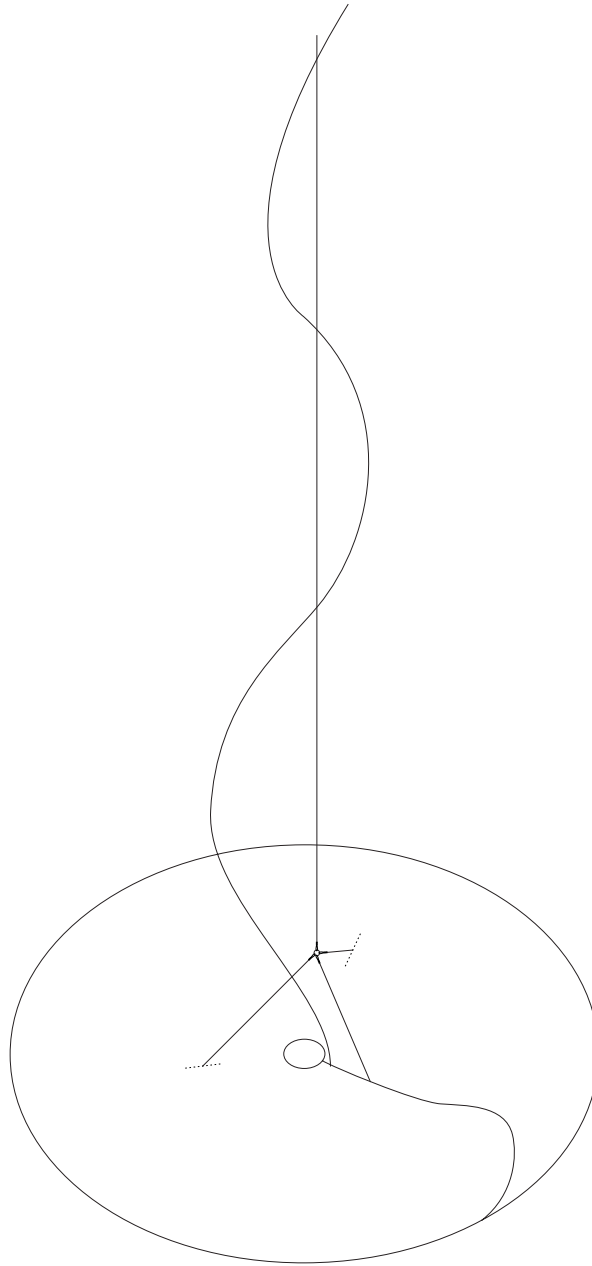
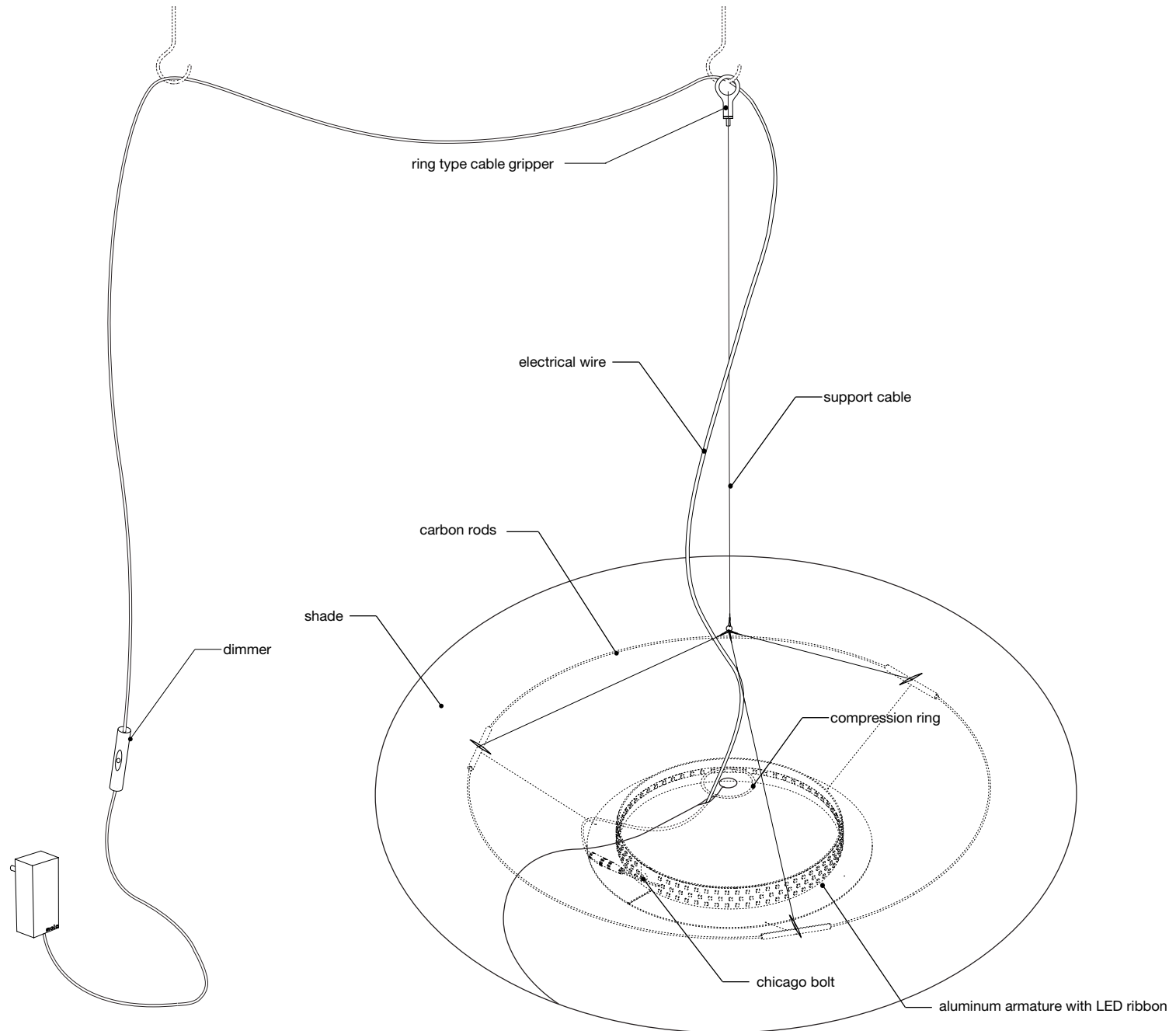


installation guide · x-large cloud softlight pendant · plug-in type

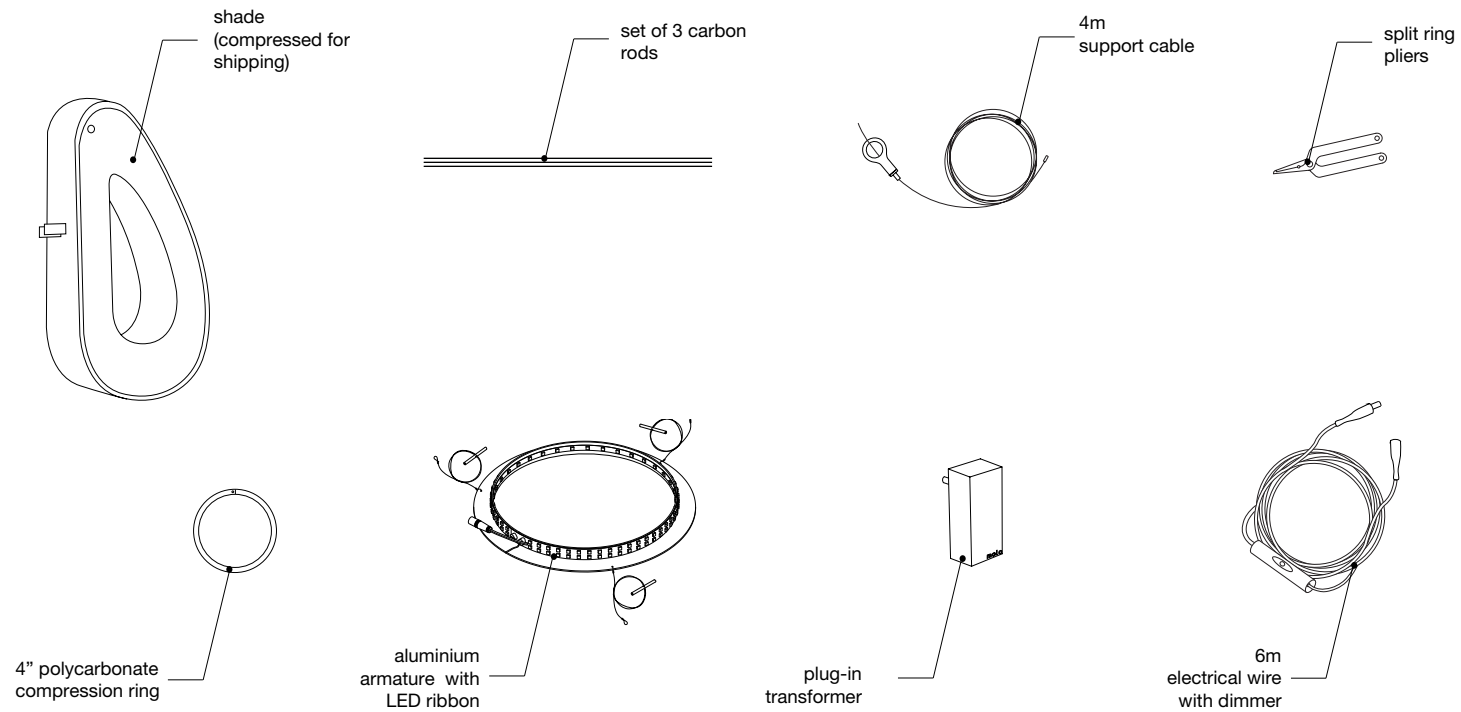


molo

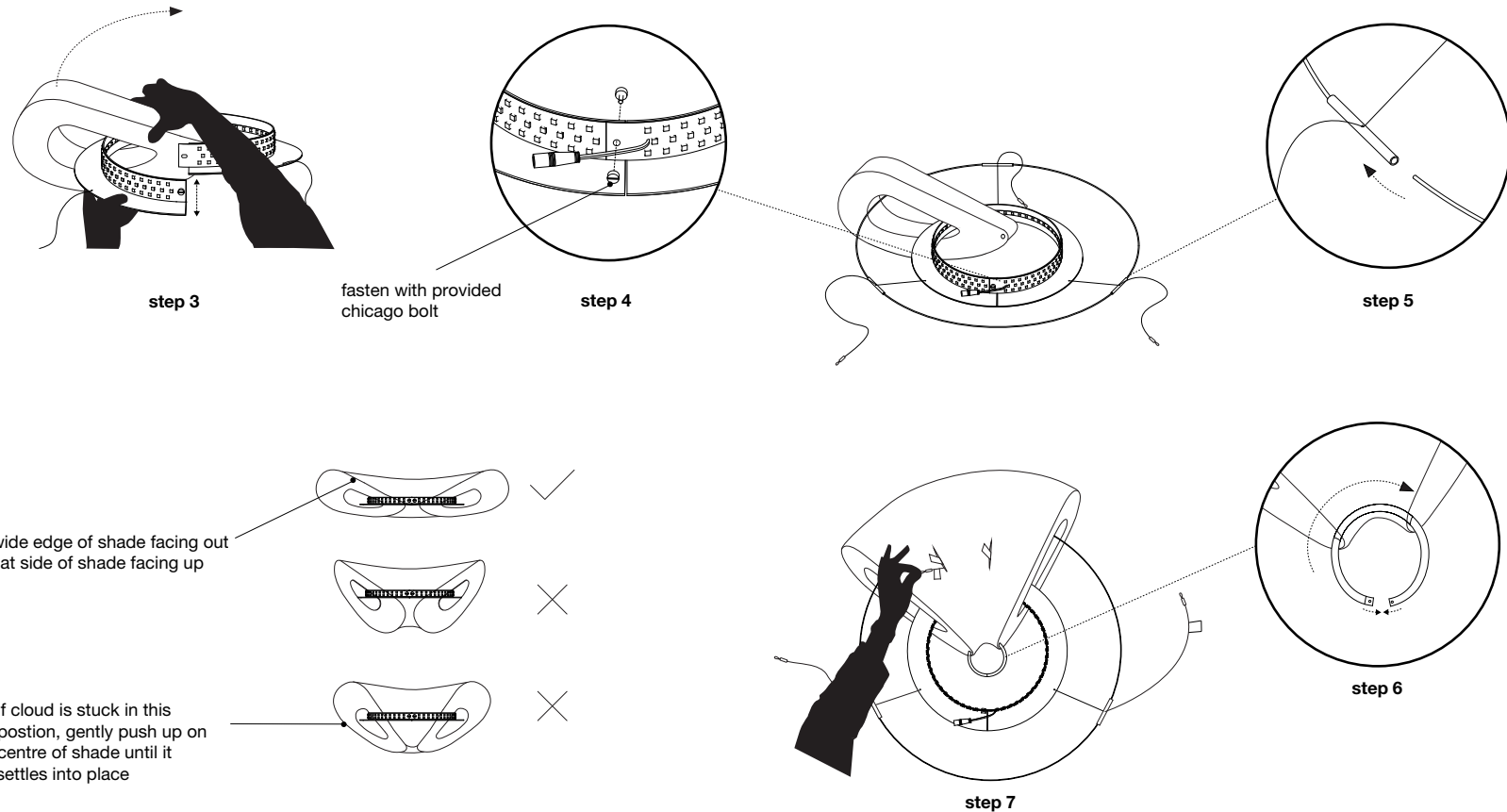
# x-large cloud pendant anatomy



# x-large cloud pendant parts



# x-large cloud pendant assembly



**step 1:** Review [x-large cloud pendant instructional video](http://www.molodesign.com/instructional-video-cloud-pendant-xlarge) (www.molodesign.com/instructional-video-cloud-pendant-xlarge)

**step 2:** Stretch cloud shade carefully, as shown in video linked above.

**step 3:** Undo the chicago bolt and split the angle ring LED armature by pulling the open ends of the ring apart vertically. Thread the armature through the cloud shade with the horizontal flange facing down. Make sure the flat side of the shade is facing up and the wider end of the shade is facing outwards.

**IMPORTANT:** If this step is not done correctly the cloud will look “droopy” when installed. The cloud should sit relatively flat and undulate gently when installed correctly.

**step 4:** Close armature ring and fasten through hole in LED ribbon and aluminium ring using provided chicago bolt.

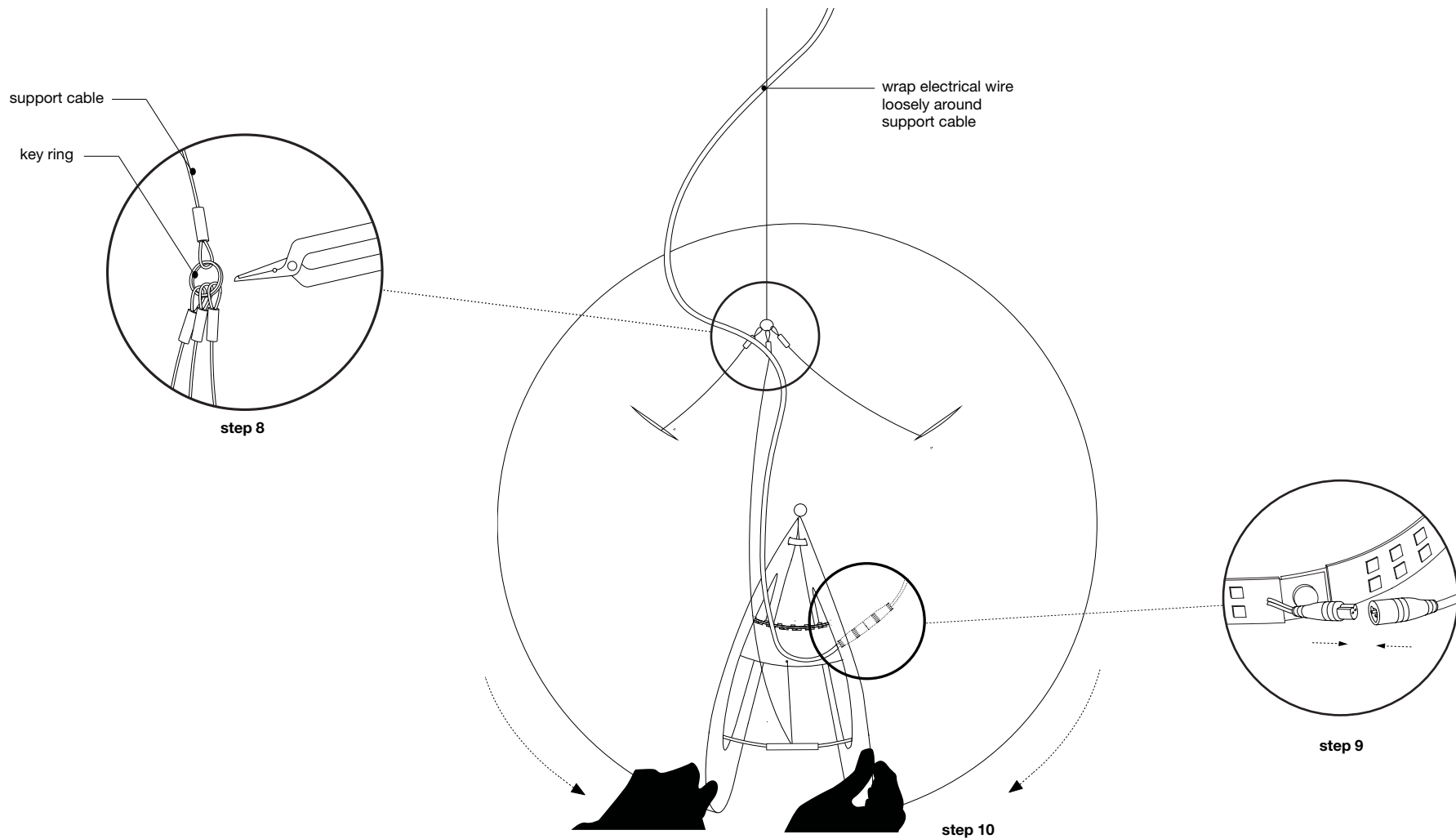
**step 5:** Complete the outer ring of the armature by inserting the white painted carbon rods into the aluminum tube connectors (fixed to cables). The rods will flex to create a circle inside the cavity of the shade.

**step 6:** Spread open cloud shade slightly and thread clear compression ring through hole in narrow end of shade (X-large only). Snap closed.

**IMPORTANT:** Do not attempt to compress the shade once the compression ring is installed. Doing so will damage the shade.

**step 7:** Feed two of the three support cables through the larger cells of the shade. Make sure the red tagged wire passes through the red tagged cell and the blue tagged wire passes through the blue tagged cell. **Remove tags.**

# x-large cloud pendant assembly

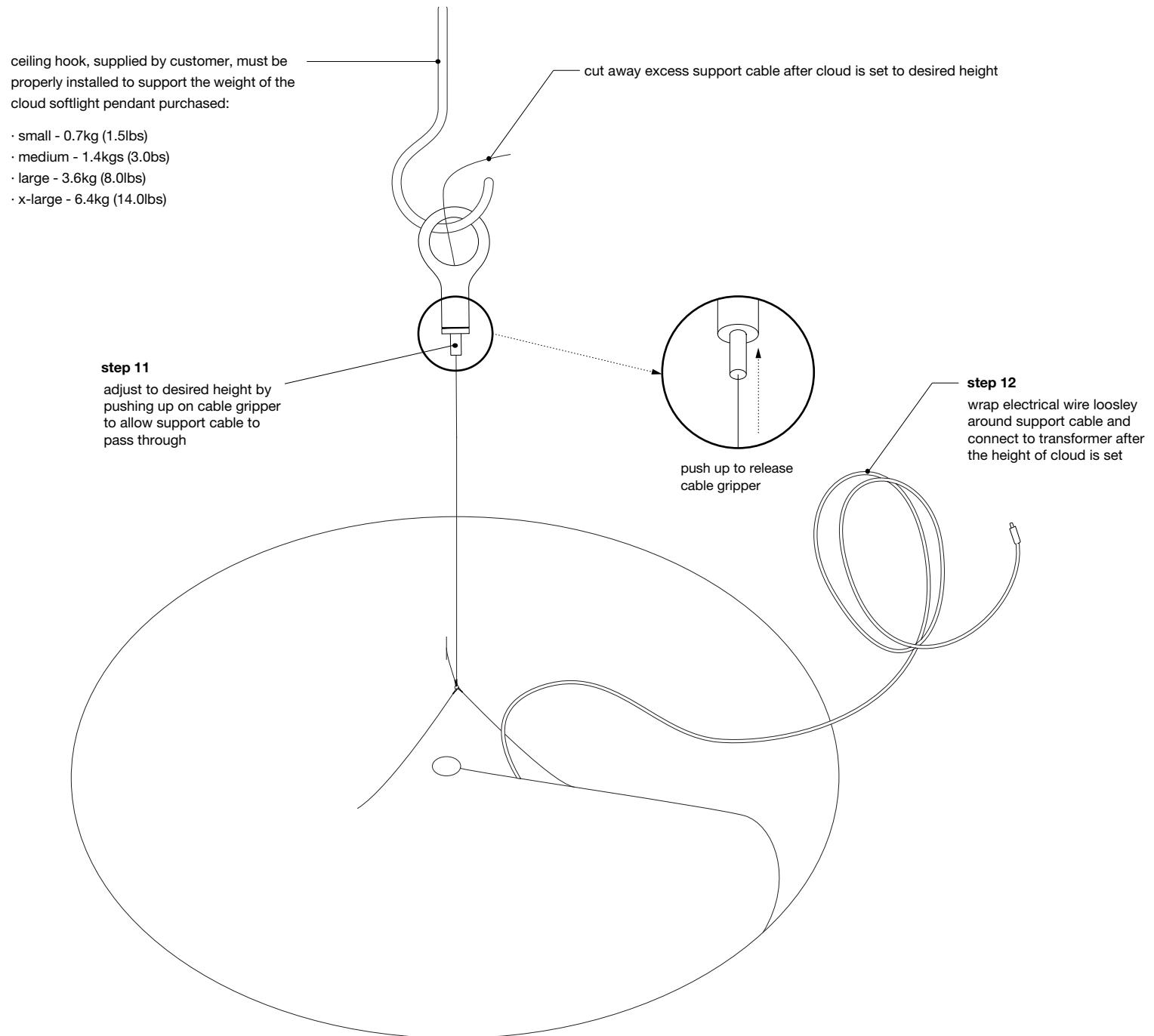


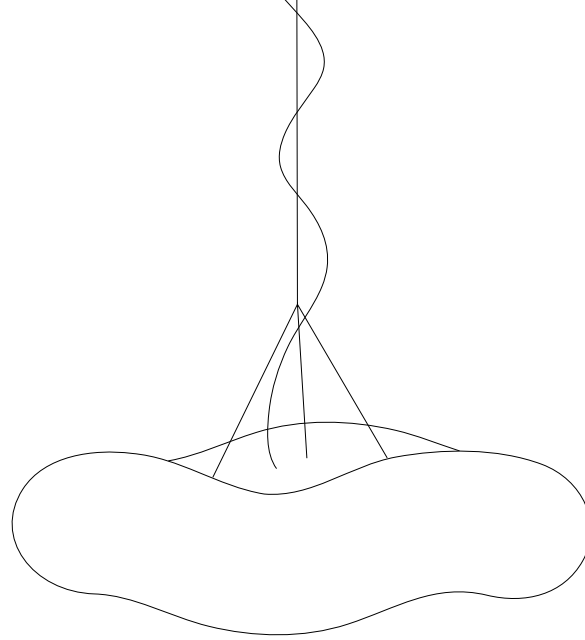
**step 8:** Use split ring pliers to open the key ring attached to main support cable and attach the three support cables from cloud pendant.

**step 9:** Wrap electrical wire loosely around support cable and then connect it to LED ribbon inside shade (be sure to line up matching groove in male and female ends of clear connectors).

**step 10:** Close the shade around the armature by grabbing 20+ layers of the outer fins and pulling the magnetic end panels around the ring until they connect together. The third steel support cable and electrical wire should be sandwiched between the two closed magnetic end panels.

# cloud pendant installation





Designed by Stephanie Forsythe and Todd MacAllen, manufactured by molo and protected by one or more patents and/or design registrations held by molo, viewable at [molodesign.com/ip](http://molodesign.com/ip)

