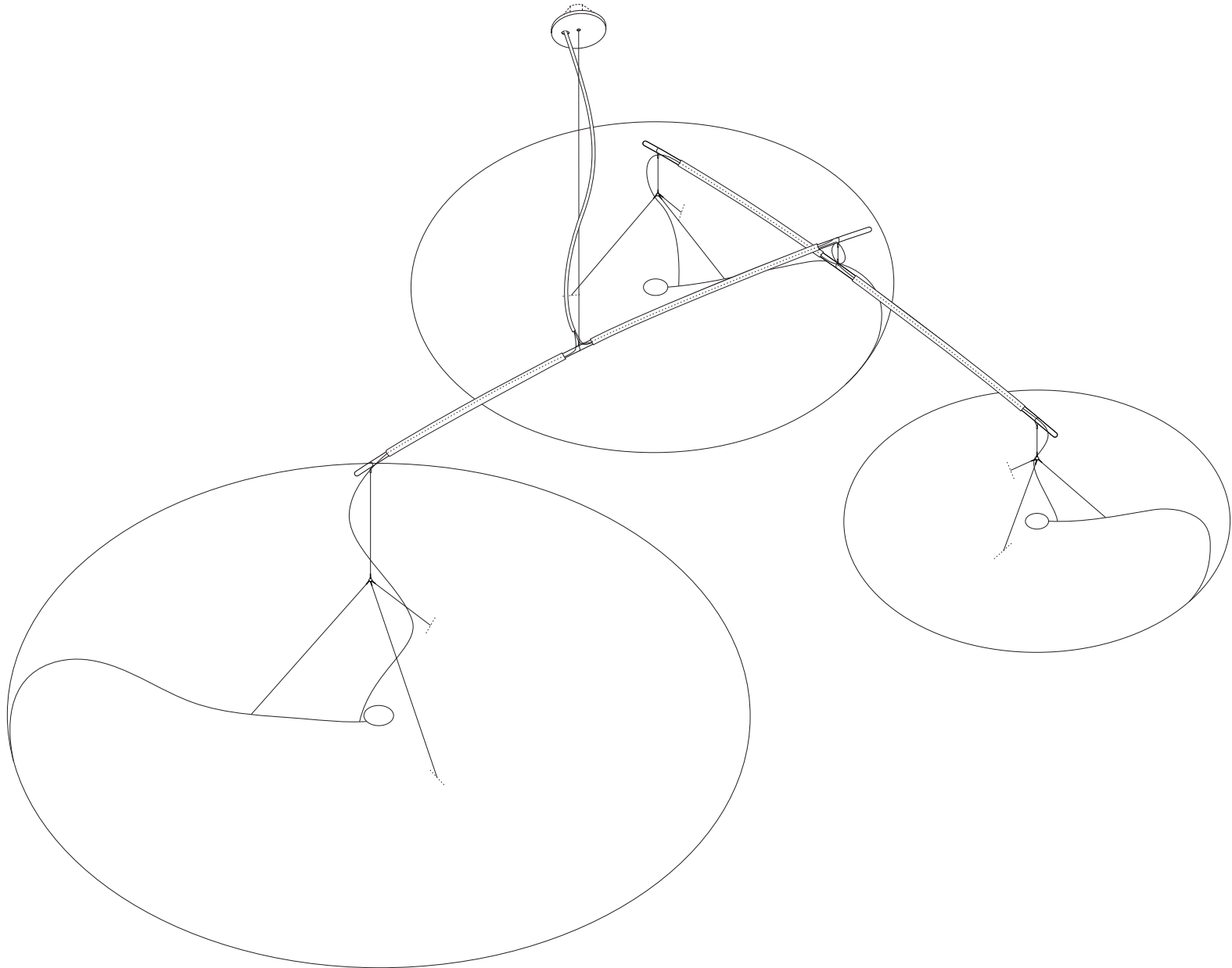
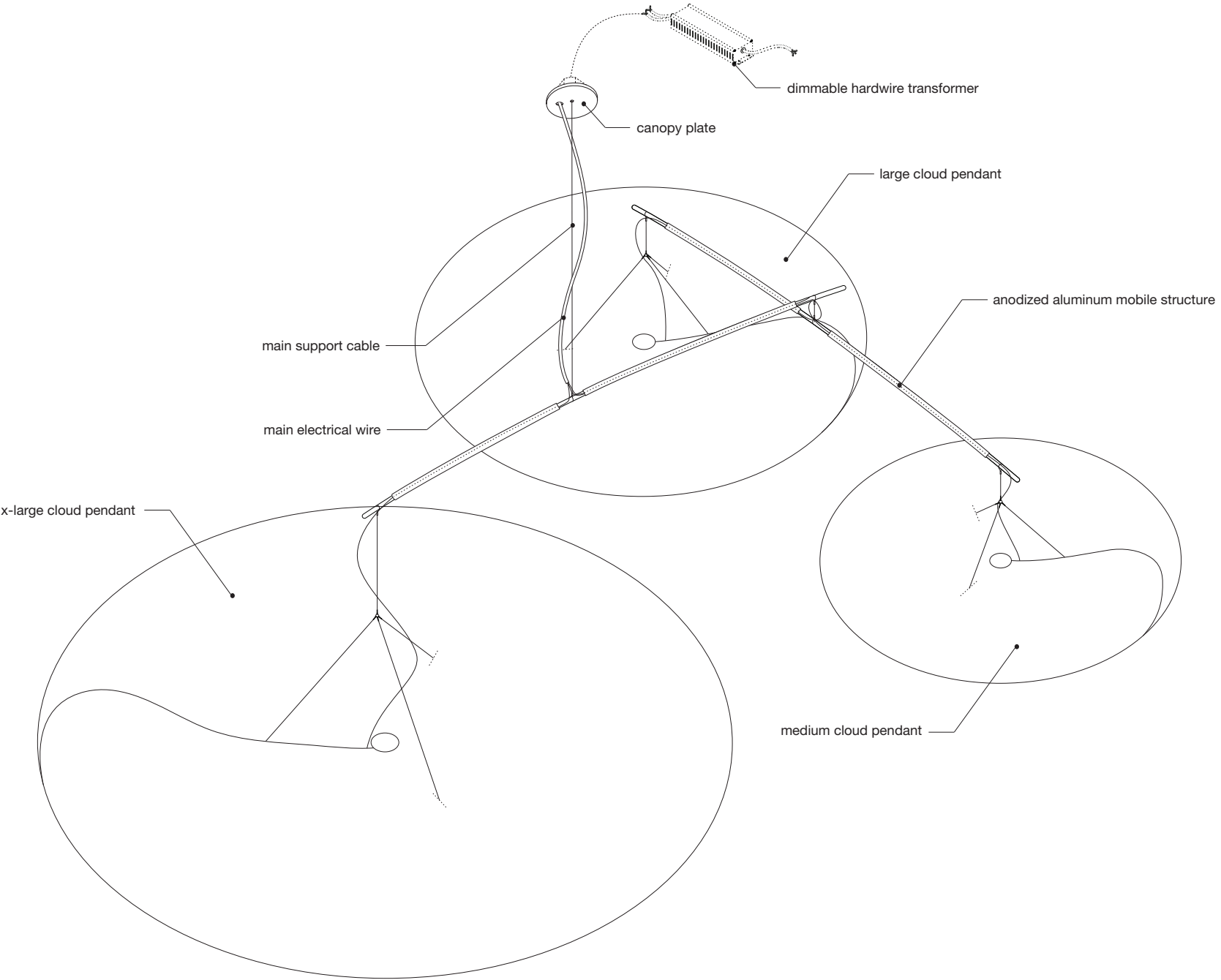


cloud softlight large mobile · installation guide

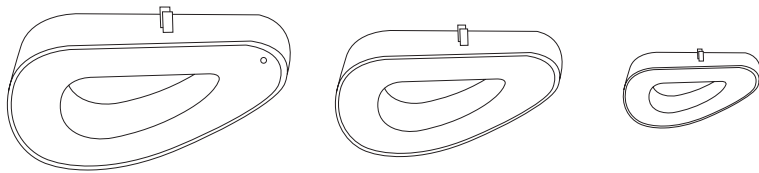
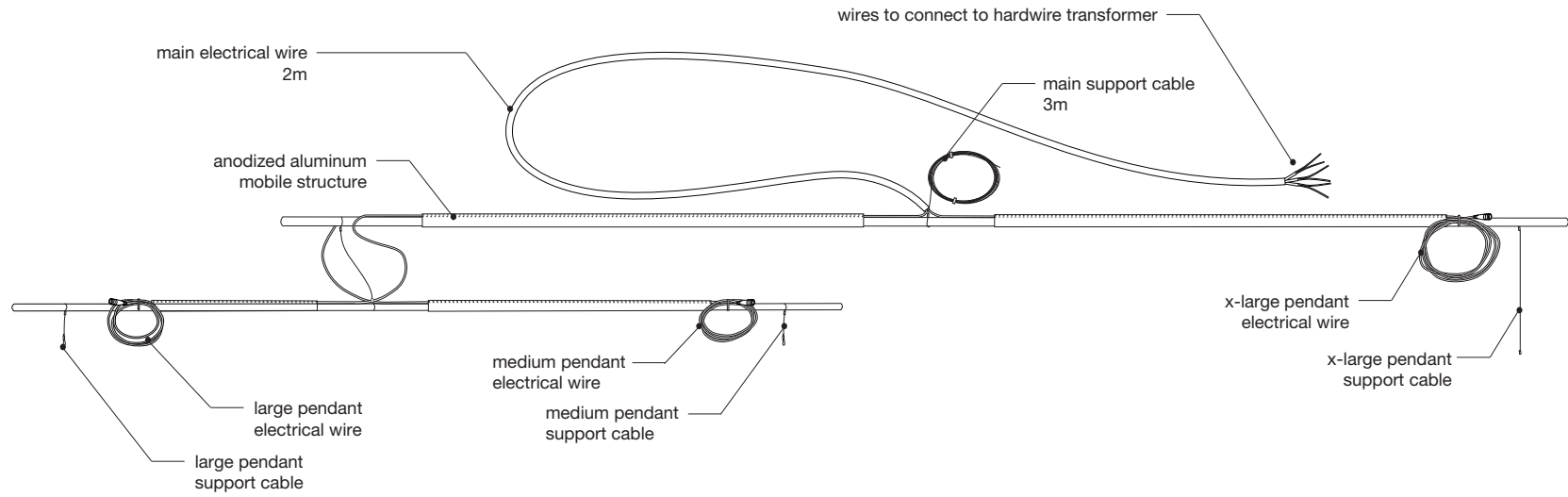


molo

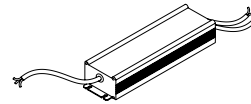
large cloud mobile anatomy



large cloud mobile parts



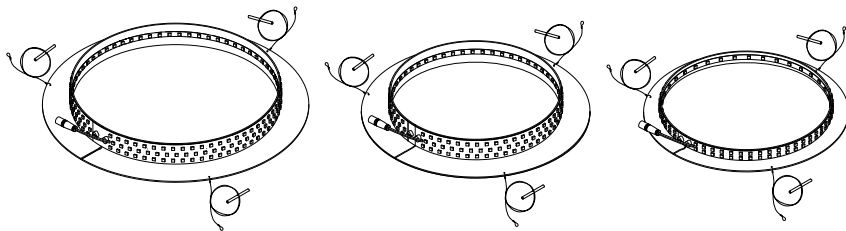
cloud shade
md, lg, xl
(compressed for shipping)



dimmable hardwire transformer



bracket bar with cable gripper



shade armatures
+ LEDs
md, lg, xl



split ring pliers



alternate "ring type"
cable gripper (flexible
option of hanging
cloud pendants from
wall hooks)

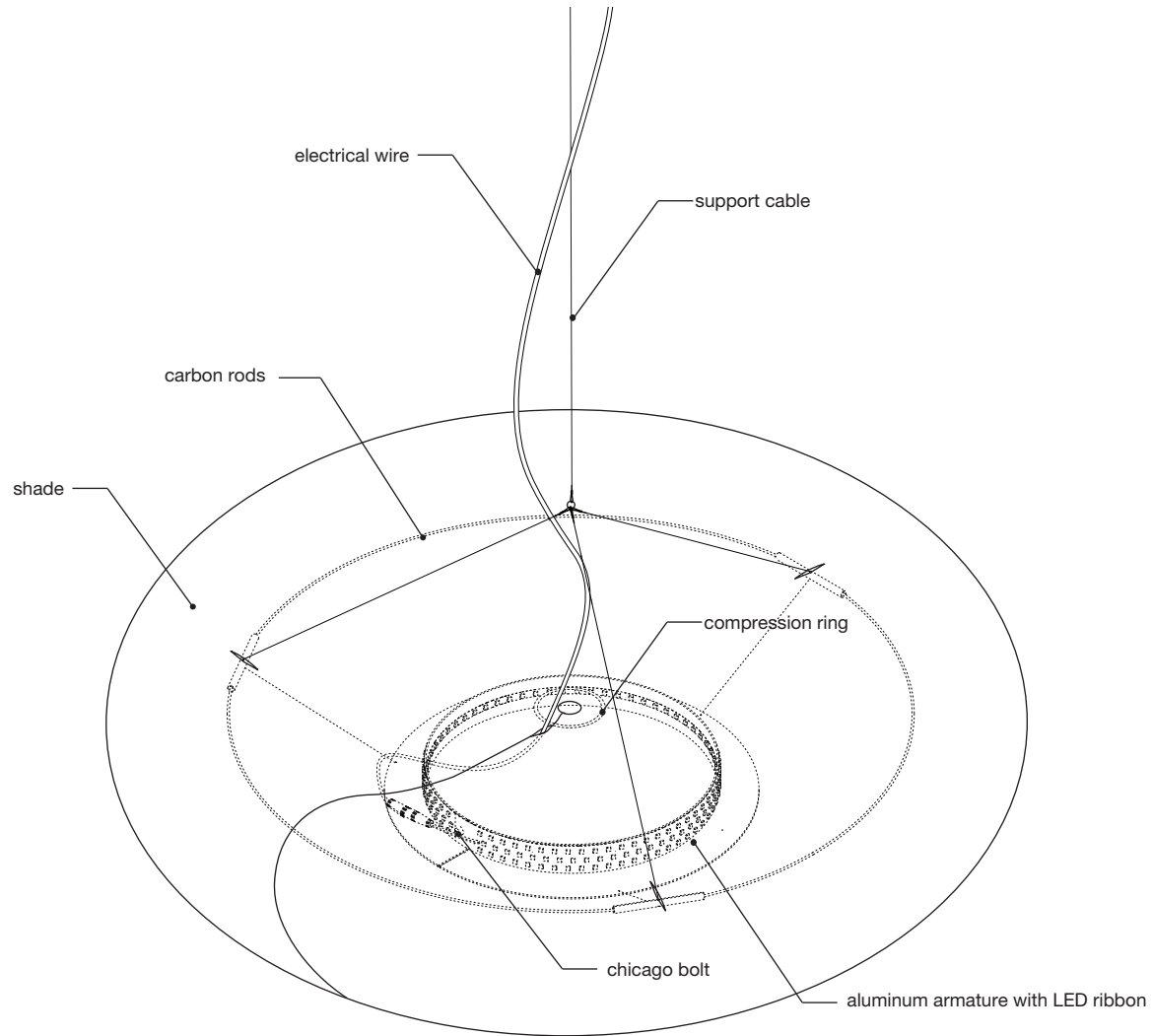


sets of 3 carbon
rods
md, lg, xl

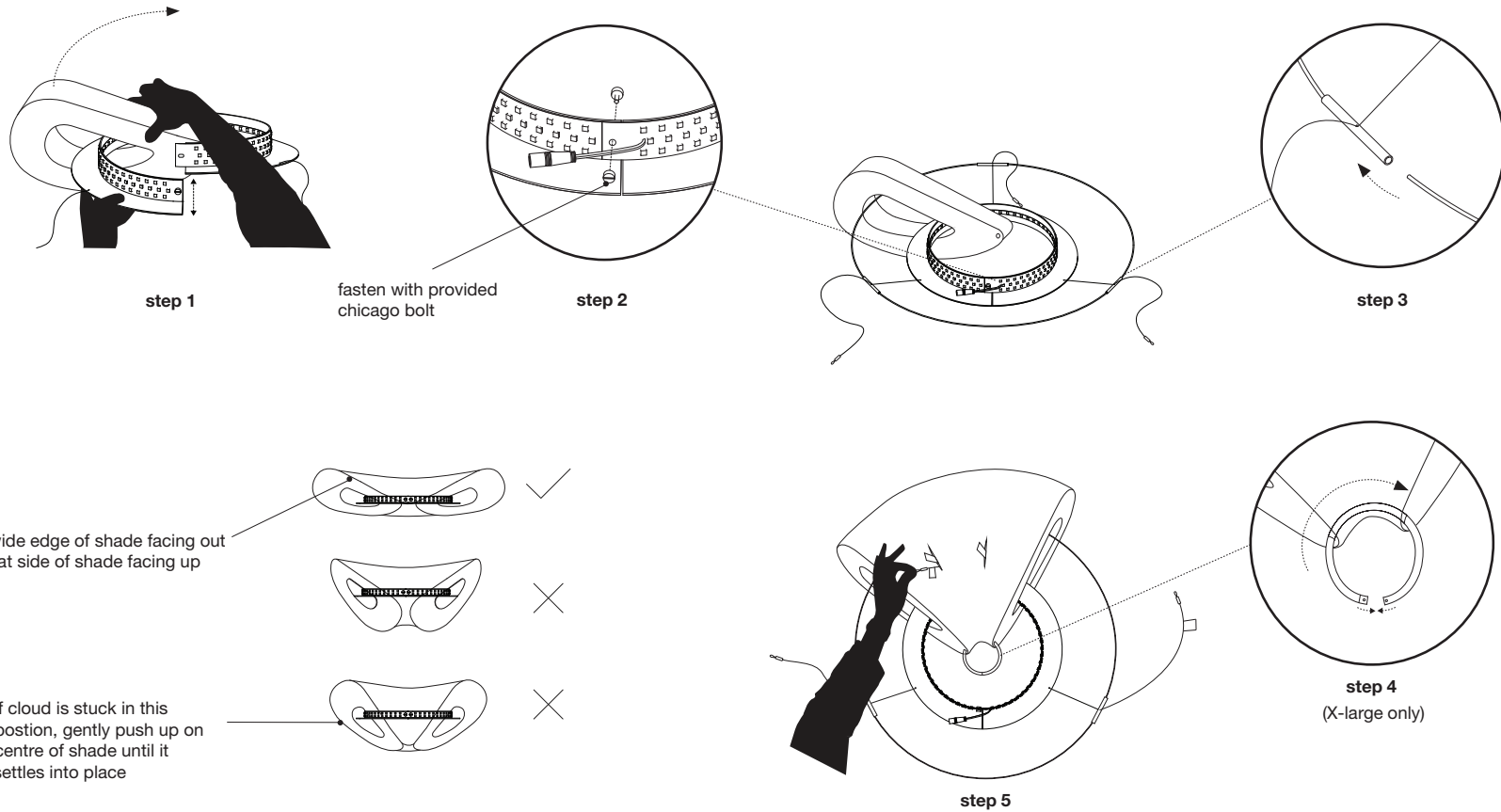


125mm (5")
canopy plate

anatomy of cloud pendant within mobile



cloud pendant assembly



step 1: Start with the medium cloud shade. Undo the chicago bolt and split the angle ring LED armature by pulling the open ends of the ring apart vertically. Thread the armature through the cloud shade with the horizontal flange facing down. Make sure the flat side of the shade is facing up and the wider end of the shade is facing outwards.

IMPORTANT: If this step is not done correctly the cloud will look “droopy” when installed. The cloud should sit relatively flat and undulate gently when installed correctly.

step 2: Close armature ring and fasten through hole in LED ribbon and aluminium ring using provided chicago bolt.

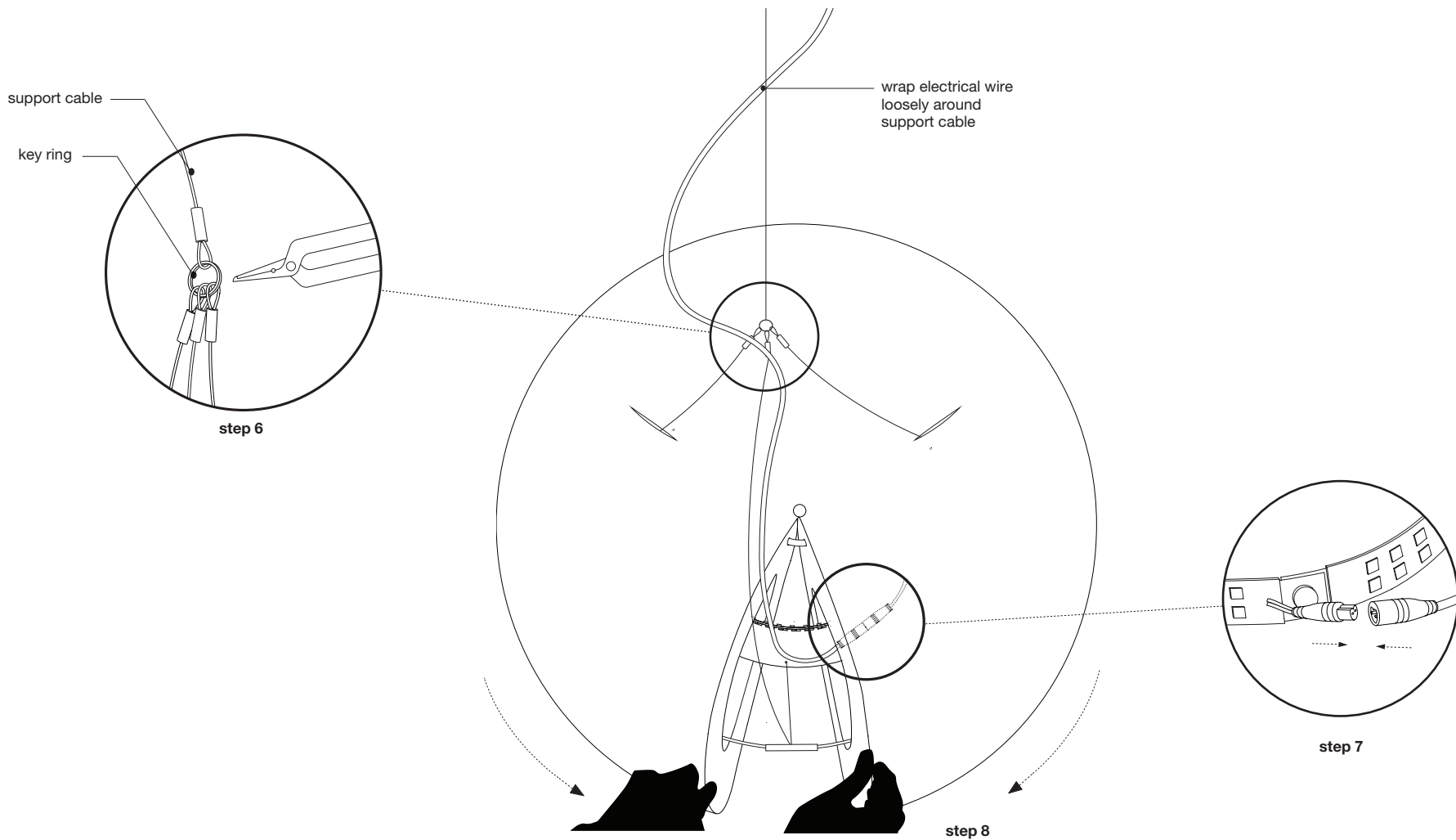
step 3: Complete the outer ring of the armature by inserting the white painted carbon rods into the aluminum tube connectors (fixed to cables). The rods will flex to create a circle inside the cavity of the shade.

step 4: Spread open cloud shade slightly and thread clear compression ring through hole in narrow end of shade (X-large only). Snap closed.

IMPORTANT: Do not attempt to compress the shade once the compression ring is installed. Doing so will damage the shade.

step 5: Feed two of the three support cables through the larger cells of the shade. Make sure the red tagged wire passes through the red tagged cell and the blue tagged wire passes through the blue tagged cell. **Remove tags.**

cloud pendant assembly



step 6: Use split ring pliers to open the key ring attached to main support cable and attach the three support cables from cloud pendant.

step 7: Wrap electrical wire loosely around support cable and then connect it to LED ribbon inside shade (be sure to line up matching groove in male and female ends of clear connectors).

step 8: Close the shade around the armature by grabbing 20+ layers of the outer fins and pulling the magnetic end panels around the ring until they connect together. The third steel support cable and electrical wire should be sandwiched between the two closed magnetic end panels.

large cloud mobile installation

step 9

bolt bracket bar with cable gripper and magnets to junction box

- junction box, supplied by customer, must be properly installed to support the weight of cloud softlight purchased

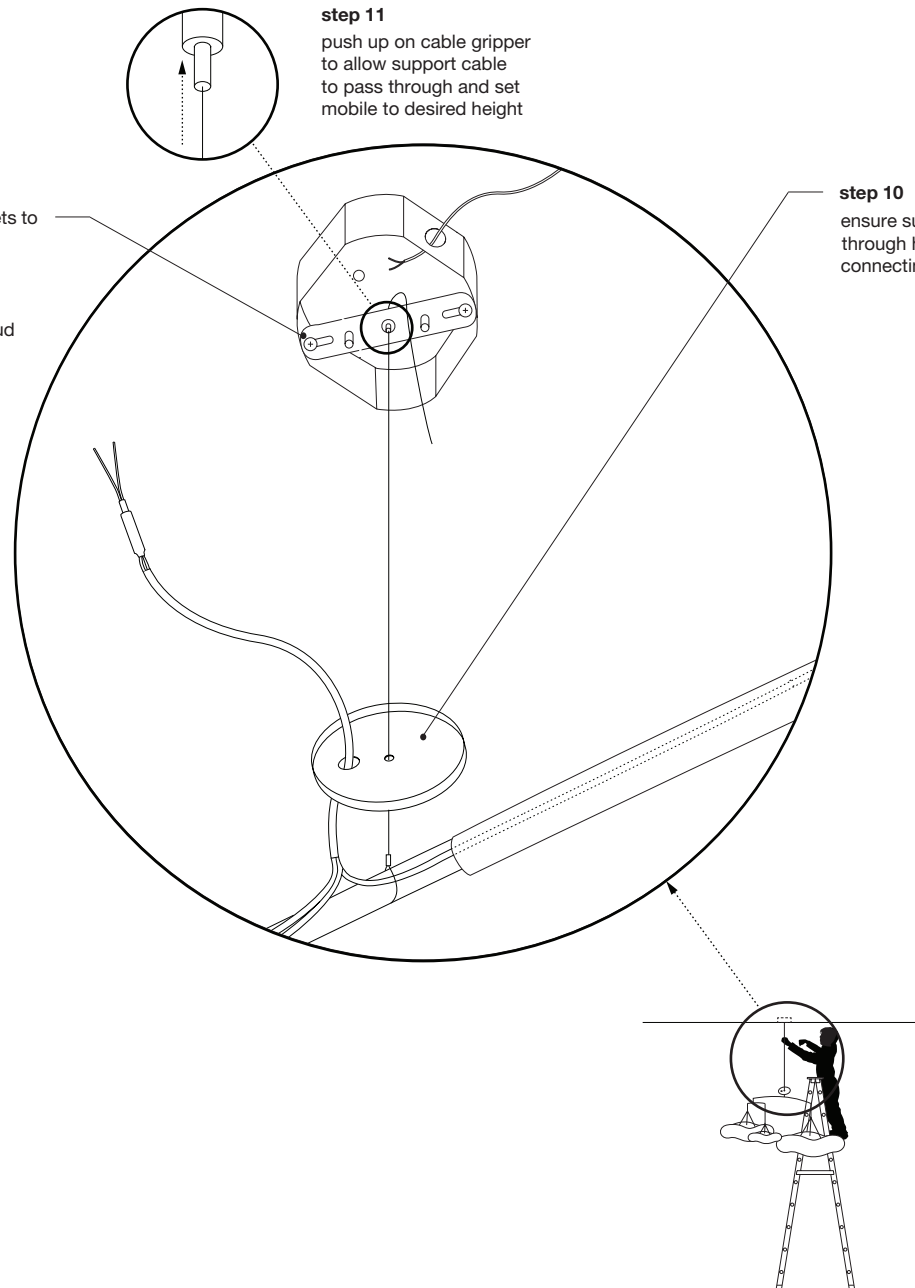
- large mobile - 12kg (26.5lbs)

step 11

push up on cable gripper to allow support cable to pass through and set mobile to desired height

step 10

ensure support cable + electrical wire pass through holes in canopy plate prior to connecting support cable to cable gripper



large cloud mobile installation

