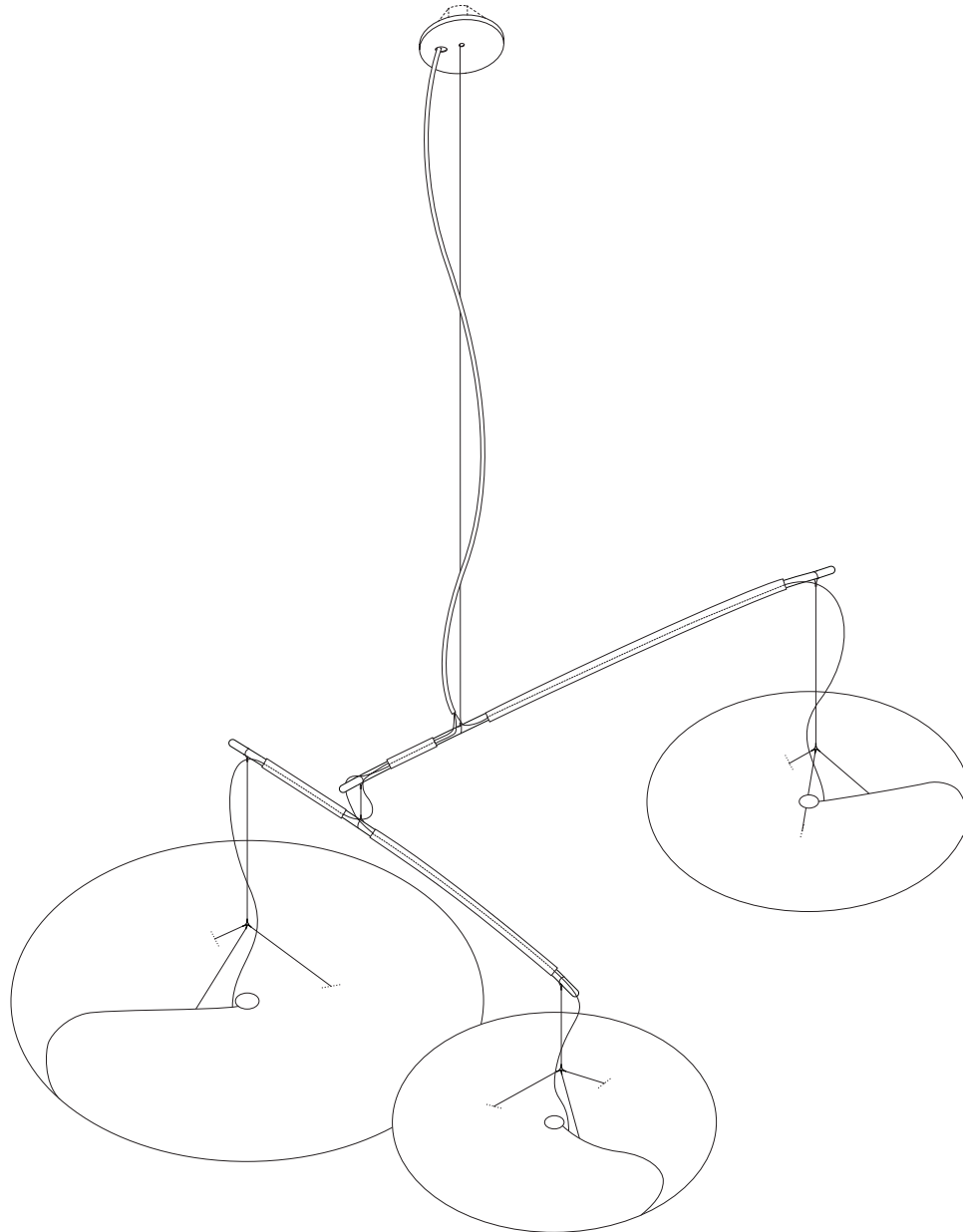
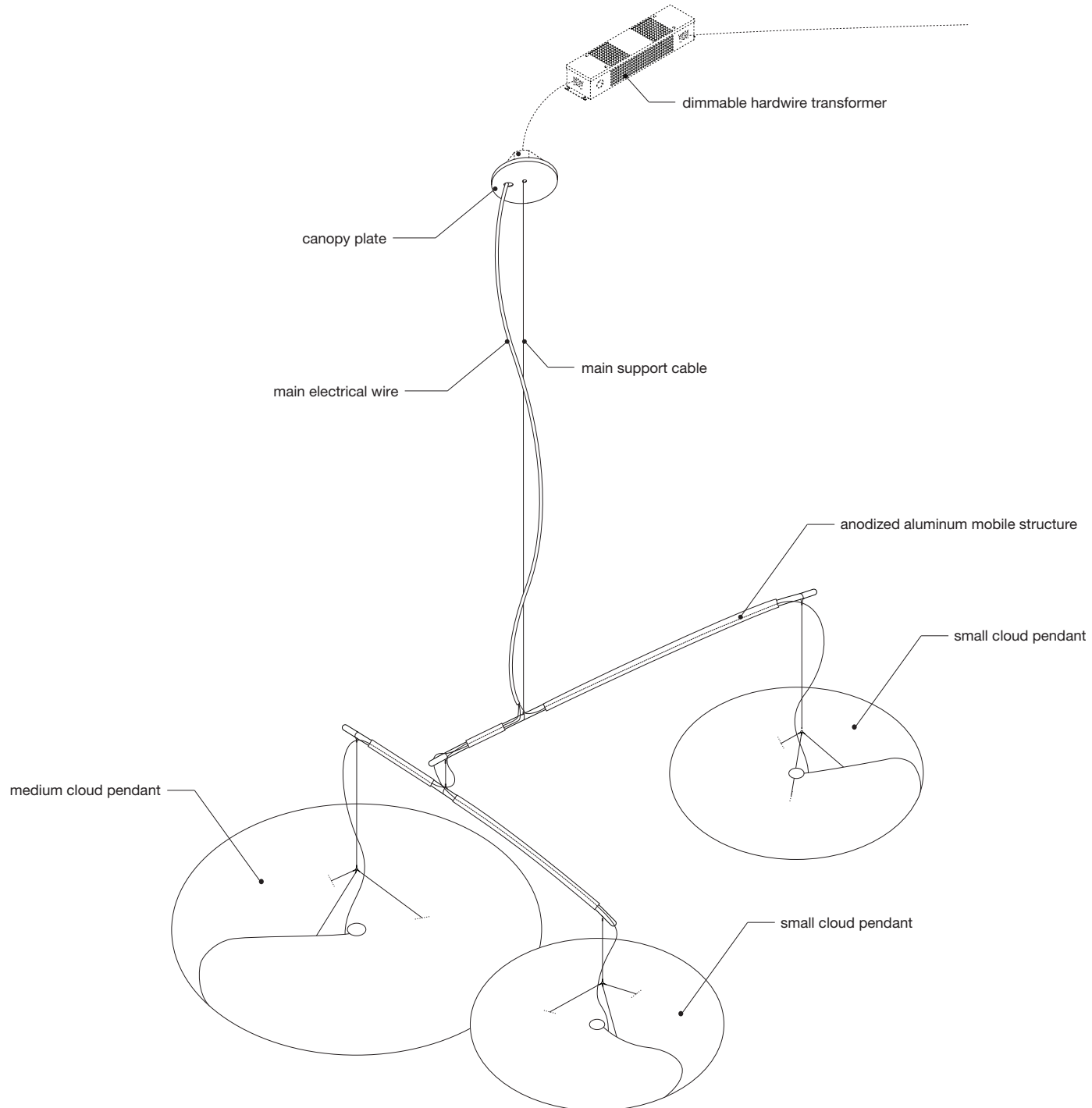


# cloud softlight small mobile · ETL installation guide

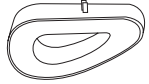
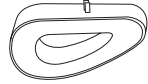
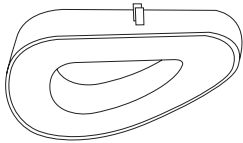
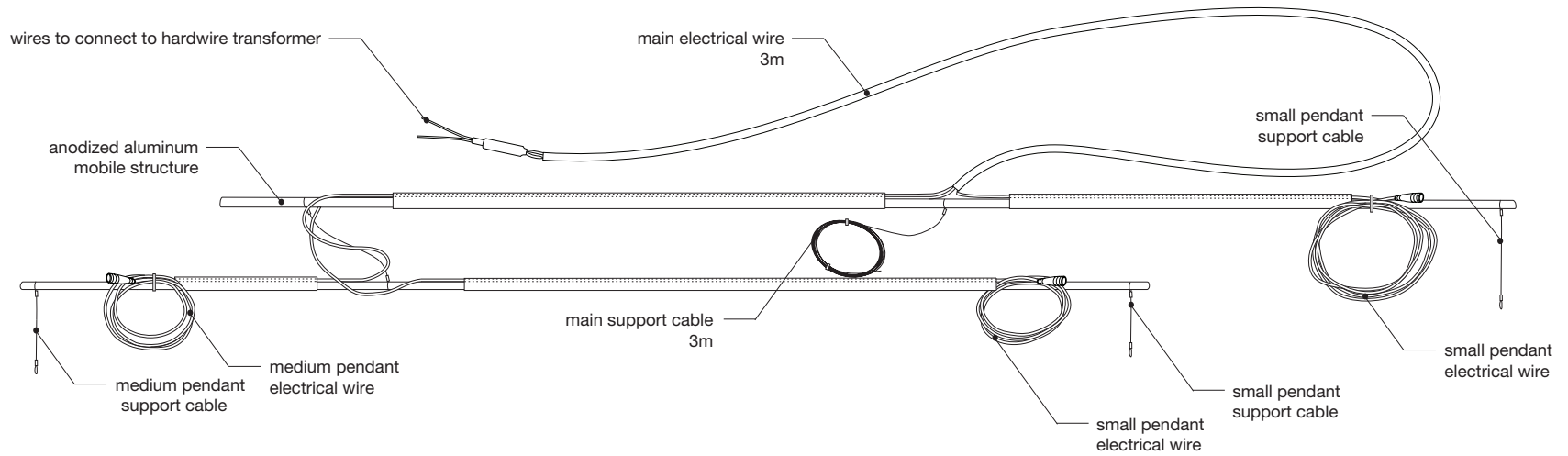


**molo**

# small cloud mobile anatomy



# small cloud mobile parts



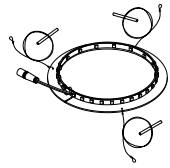
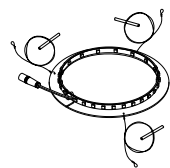
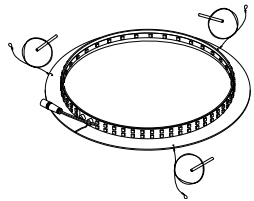
cloud shade  
2x sm, 1x md  
(compressed for shipping)



x7 marrettes



bracket bar with  
cable gripper and  
magnets



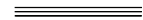
shade armature  
+ LEDs  
2x sm, md



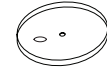
nylon zap strap



x3 clamps



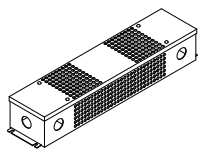
set of 3 carbon rods  
2x sm, 1x md



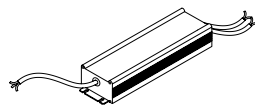
125mm (5")  
canopy plate



alternate "ring type"  
cable gripper



junction box  
enclosure for driver

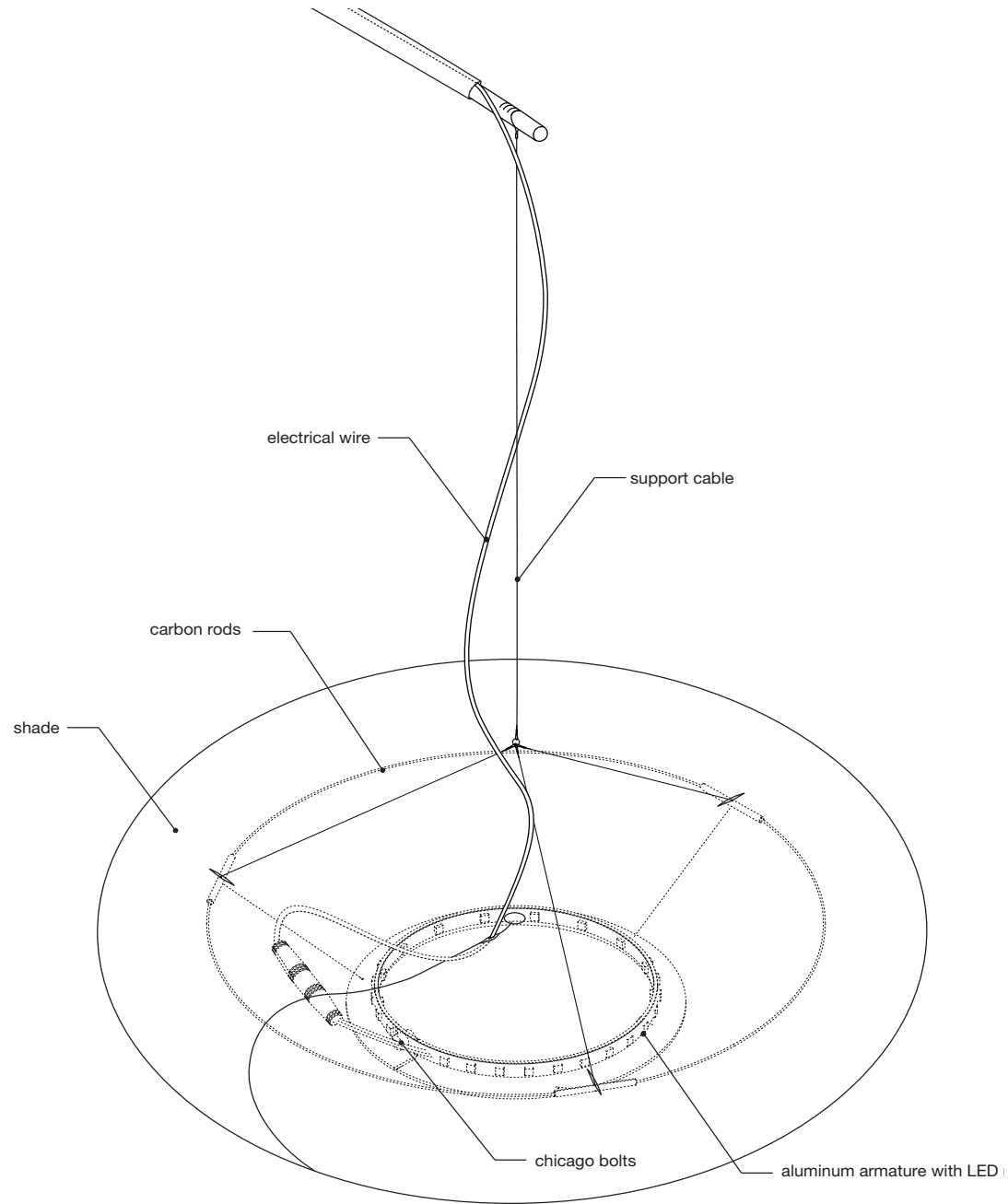


dimmable  
hardwire LED driver

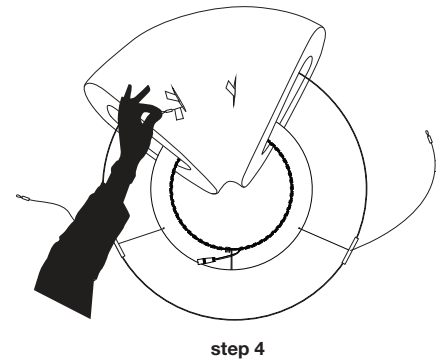
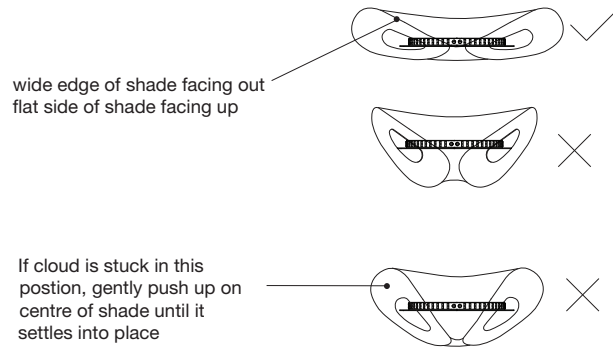
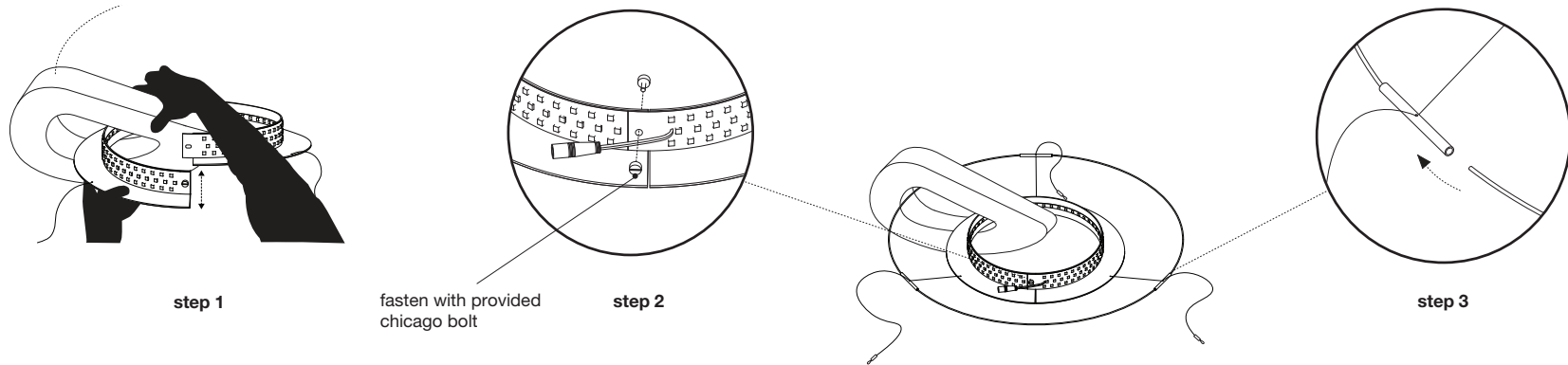


split ring pliers

# anatomy of cloud pendant within mobile



# cloud pendant assembly



**step 1:** Undo the chicao bolt and split the angle ring LED armature by pulling the open ends of the ring apart vertically. Thread the armature through the cloud shade with the horizontal flange facing down. Make sure the flat side of the shade is facing up and the wider end of the shade is facing outwards.

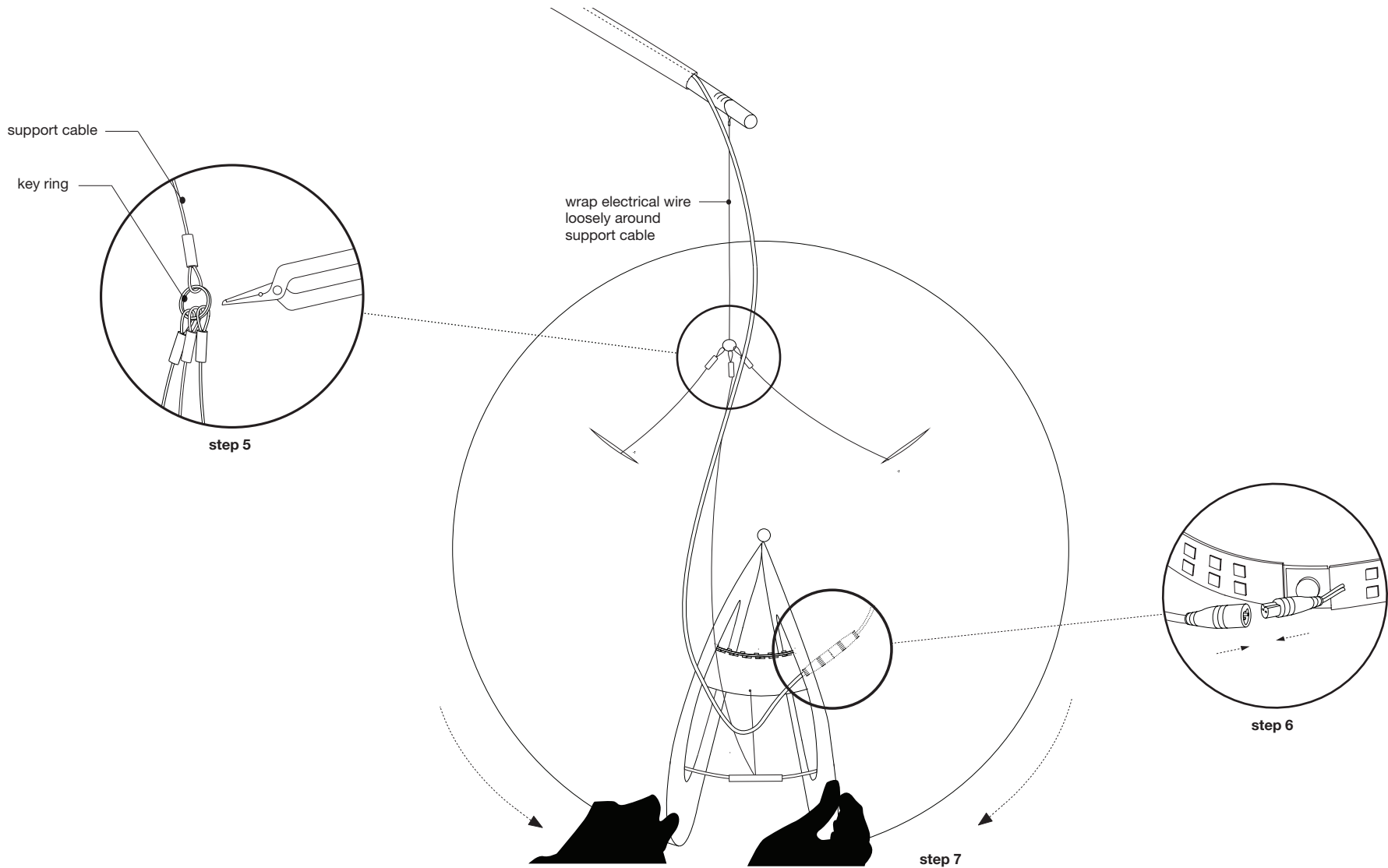
**IMPORTANT:** If this step is not done correctly the cloud will look “droopy” when installed. The cloud should sit relatively flat and undulate gently when installed correctly.

**step 2:** Close armature ring and fasten through hole in LED ribbons and aluminium ring using provided chicao bolt.

**step 3:** Complete the outer ring of the armature by inserting the white painted carbon rods into the aluminum tube connectors (fixed to cables). The rods will flex to create a circle inside the cavity of the shade.

**step 4:** Feed two of the three support cables through the larger cells of the shade. Make sure the red tagged wire passes through the red tagged cell and the blue tagged wire passes through the blue tagged cell . **Remove tags.**

# cloud pendant assembly



**step 5:** Use split ring pliers to open the key ring attached to main support cable and attach the three support cables from cloud pendant armature.

**step 6:** Connect electrical wire to LED ribbon inside shade (be sure to line up matching groove in male and female ends of clear connectors).

**step 7:** Close the shade around the armature by grabbing 20+ layers of the outer fins and pulling the magnetic end panels around the ring until they connect together. The third steel support cable and electrical wire should be sandwiched between the two closed magnetic end panels.

# small cloud mobile installation

## step 8

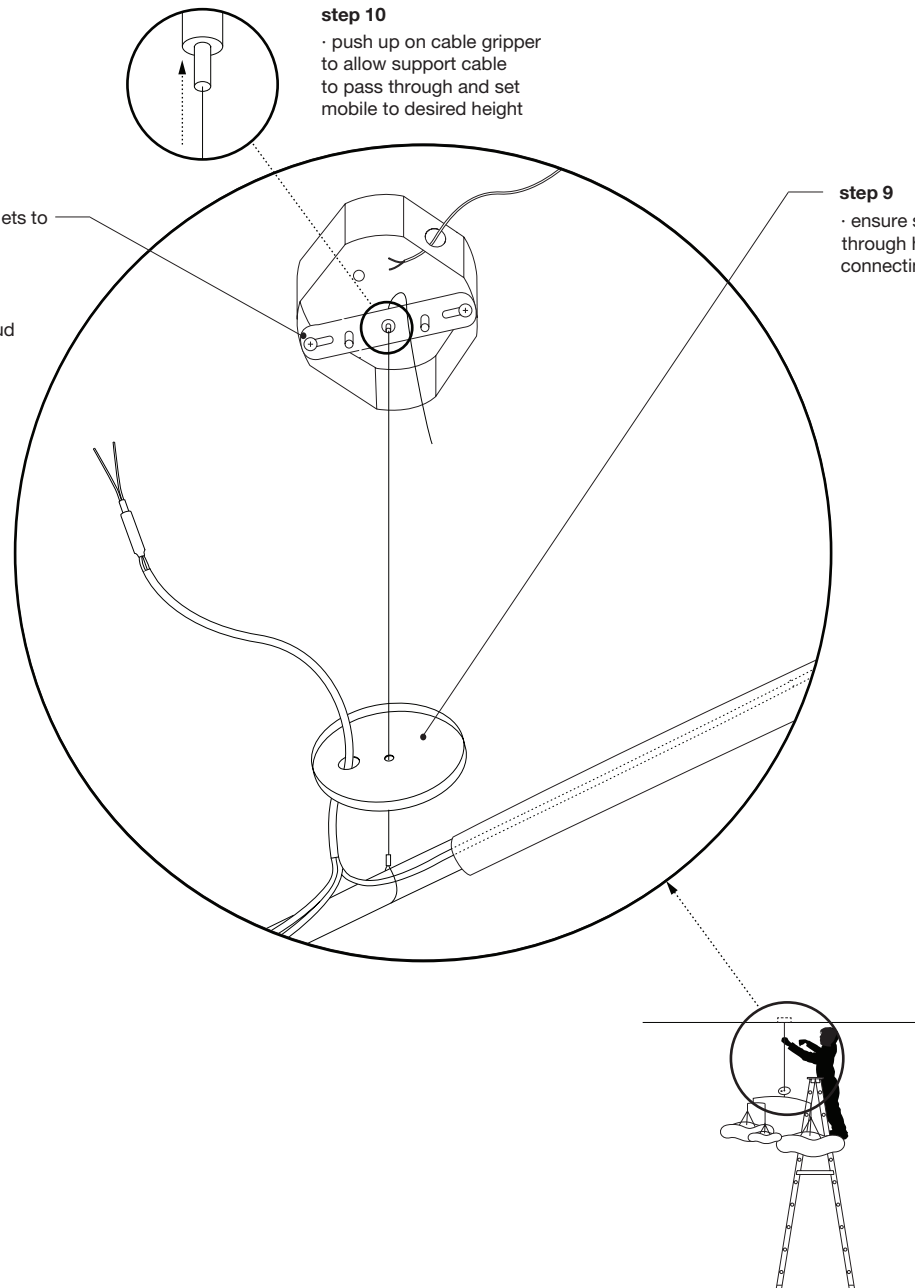
- bolt bracket bar with cable gripper and magnets to junction box
- junction box, supplied by customer, must be properly installed to support the weight of cloud softlight purchased
- small mobile - 3.0kg (6.6lbs)

## step 10

- push up on cable gripper to allow support cable to pass through and set mobile to desired height

## step 9

- ensure support cable + electrical wire pass through holes in canopy plate prior to connecting support cable to cable gripper



# small cloud mobile installation

